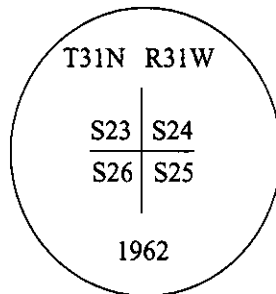


CERTIFIED CORNER RECORDATION

Corner Sec. Cor. Sec. 23,24, 25&26 T. 31N R. 31W P.M., MT Lincoln County

- I. 1893 G.L.O. Original Record by Daniel P. Mumbrue #287.: Set a 4 ft. long, 4 ins. square, wooden post, 24 ins. the ground, for cor. to secs. 23,24,25,&26, mkd. "T31N Sec. 24" on N.E., "R31W Sec. 25" on S.E., "Sec. 26" on S.W. and "Sec. 23" on N.W. faces, with 2 notches on S. and 1 notch on E. edges. Established four bearing trees.

1962 B.L.M. Remonumentation Record by Gerald F. Pitman et. al.: The cor. of secs. 23,24,25,&26, monumented with the decayed remains of a wooden post, firmly set in the ground, and witnessed by the remains of one of the original bearing trees. At the corner point, set an iron post, 30 ins. long, 2 1/2 ins. diam., 26 ins. in the ground, with the brass cap mkd. as shown:



Established four new bearing trees and buried the remains of the original wooden post alongside, and raise a flat mound of stone, 4 ft. diam., around the iron post.

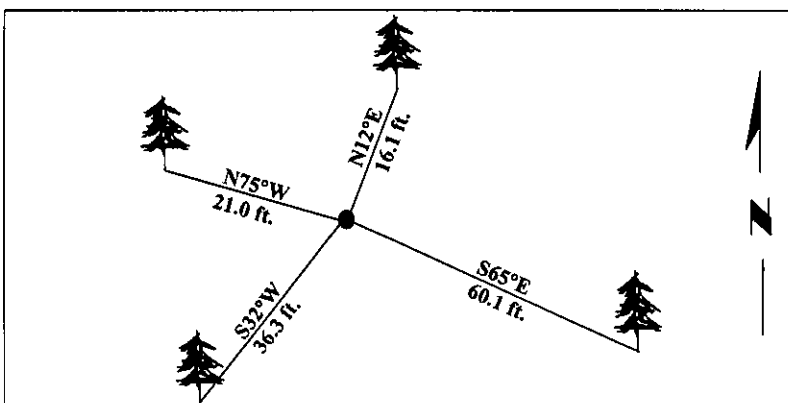
- II. Found a 2 1/2 in. diam. iron post, with a 3 1/4 in. diam. brass cap, set flush in a collar of stone, cap mkd. as shown above.

from which:

A fir, 20 ins. diam., bears N12°E (rec. N7°E), 16.1 ft. dist., mkd. with a healed face. (BLM)
A fir, 19 ins. diam., bears S65°E (rec. S60°E), 60.1 ft. dist., mkd. with a healed face. (BLM)
A larch, 21 ins. diam., bears S32°W, 36.3 ft. dist., mkd. with a healed face. (BLM)
A fir, 21 ins. diam., bears N75°W, 21.0 ft. dist., mkd. with a healed face. (BLM-rec.N70°W, 19.8 ft.)

- III. Painted bearing trees and attached Land Survey Monument and Bearing Tree signs.

Magnetic Declination: 20° East.



SKETCH OF CORNER

CERTIFICATION

I, Jeffrey Hintz certify the information shown herein is true and correct.

I, Ronald A. Pearson certify that this Corner Record correctly represents work performed by me or under my direction in compliance with the "Corner Recordation Act" (70-22-101, et seq., M.C.A.)

Signature of Surveyor & Seal

Date: 12/30/96

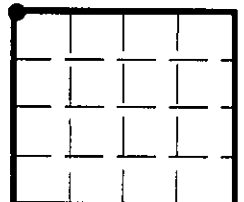
Reg. No.: 9008LS

Employer: U.S. FOREST SERVICE

Office of Clerk and Recorder, County of LINCOLN. This "corner record" was filed for record on FEB 3 1997 and was noted on the cross-index plat and is assigned page No. 9102, in book No. CORAL M. CUMMINGS By DJB

County Official

Sec. 25



● - corner this sheet

Cross Index No. R-21 T. 31N R. 31W P.M., MT