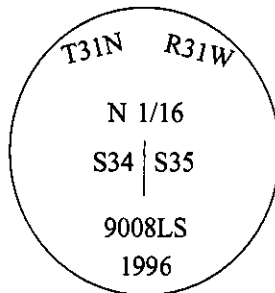


CERTIFIED CORNER RECORDATION

Corner N 1/16 Sec. 34&35 T. 31N R. 31W P.M., MT Lincoln County

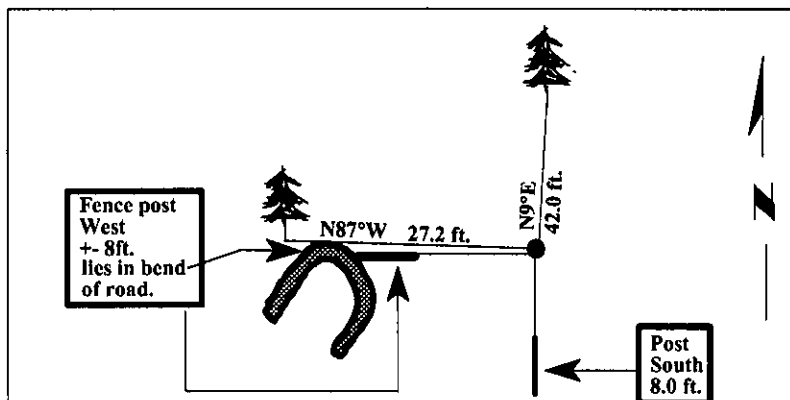
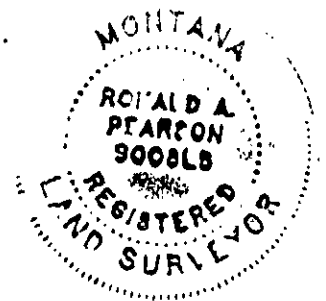
- I. 1977 Certificate of survey No. 354 By M.D.L. No. 4232S: Set by survey, a 7/8 in. diam. iron pipe.
- II. Found a 7/8" iron pipe, with a plastic cap, mkd. MDL 4232S, buried 8 in. below the surface of the road.
from which:

A fir, 18 ins. diam., bears N9°E, 42.0 ft. dist., mkd. "N 1/16 S35".
A fir, 19 ins. diam., bears N87°W, 27.2 ft. dist., mkd. "N 1/16 S34".
- III. Accepted found iron pipe and set a 30 in. long, 2 1/2 in. diam. aluminum pipe, with a 3 1/4" aluminum cap, set 8 ins. below the surface of the road, with the found iron pipe inside, cap mkd. as shown:



Set a 6 ft. steel guard post, South, 8.0 ft., with Land Survey Monument and Property Boundary decals.
Fence line corner post (8" diam.), lies in the bend of the road, (+-) 8 ft. West of corner.
Painted bearing trees and attached Land Survey Monument and Bearing Tree signs.

Magnetic Declination: 20° East.



SKETCH OF CORNER

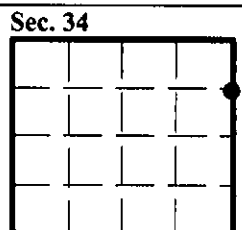
CERTIFICATION
I, Jeffery Hintz
certify the information shown herein is true and correct.

I, Ronald A Pearson
certify that this Corner Record correctly represents work performed by me or under my direction in compliance with the "Corner Recordation Act" (70-22-101, et seq., M.C.A.)

Signature of Surveyor & Seal
Date: 12/30/96
Reg. No.: 9008LS
Employer: U.S. FOREST SERVICE

Office of Clerk and Recorder, County of LINCOLN. This "corner record" was filed for record on FEB 3, 1997 and was noted on the cross-index plat and is assigned page No. 9101, in book No. _____.

GORAL M. CUMMINGS
County Official



● - corner this sheet

Cross Index No. W-17 T. 31N R. 31W P.M., MT