

CERTIFIED CORNER RECORDATION

Corner CN 1/16 Sec. 33 T. 31 N R. 31 W P.M., MT Lincoln County

I. 1979 Certified Corner Recordation by Gerald E. Bunton: Set a 24 in. long, 5/8 in. diam. rebar, tagged GEB 4974-S.

Established two bearing trees:

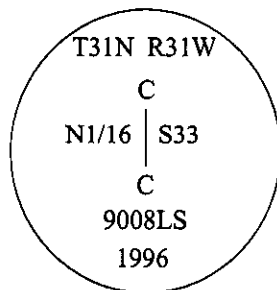
- A lodgepole pine, 9 in. diam., bears N77°45'E, 54.3 ft. dist.
- A lodgepole pine, 12 in. diam., bears S01°W, 7.9 ft. dist.
- Both trees were scribed and posted.

II. Found rebar with a plastic cap mkd. "4974S".

from which:

- A pine, 20 ins. diam., bears N10°E, 48.9 ft. dist. (1979-record N77°45'E, 54.3 ft.)
- A pine, 16 ins. diam., bears N5°W, 8 ft. dist., "N 1/16" visible. (1979-record S01°W, 7.9 ft.)

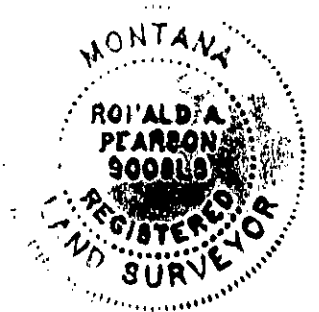
III. At the position determined by survey, accepted the found monument and set a 30 in. long, 2 1/2 in. diam. aluminum pipe, 27 ins. in the ground, with a 3 1/4 in. diam., aluminum cap mkd. as shown:



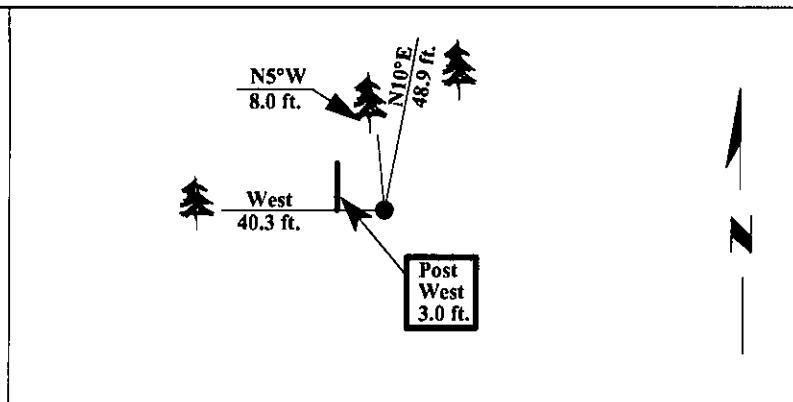
Established one new bearing tree and one post:

- A pine, 11 ins. diam., bears West, 40.3 ft. dist., mkd. "CN1/16 S33 BT".
- A 6 ft. steel guard post, bears West, on property line, 3.0 ft. dist.

Painted bearing trees and attached Land Survey Monument and Bearing Tree signs.
Attached Land Survey Monument Property Boundary decals to the guard post.



Magnetic Declination: 20° East.

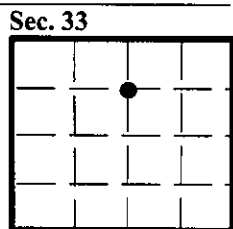


SKETCH OF CORNER

CERTIFICATION
I, <u>Jeffrey A. Hintz</u> certify the information shown herein is true and correct.
I, <u>RONALD A. PEARSON</u> certify that this Corner Record correctly represents work performed by me or under my direction in compliance with the "Corner Recordation Act" (7Q-22-101, et seq., M.C.A.)
<i>[Signature]</i> Signature of Surveyor & Seal
Date: <u>12/30/96</u>
Reg. No.: <u>9008LS</u>
Employer: <u>U.S. FOREST SERVICE</u>

Office of Clerk and Recorder, County of LINCOLN. This "corner record" was filed for record on FEB 3, 1997 and was noted on the cross-index plat and is assigned page No. 9100 in book No. _____.

CORAL M.C. MMINGS
County Official *[Signature]*



● - corner this sheet