

CERTIFIED LAND CORNER RECORDATION

DESCRIPTION OF CORNER EVIDENCE FOUND; AND ORIGINAL RECORD (IF KNOWN)

See other side. - NW corner, SW corner, N $\frac{1}{4}$ corner, NE corner are standard brass cap monuments. East $\frac{1}{4}$ corner falls in Kootenai River. Meander corners on east line of Sec. 35 Twp. 31 N., R. 31 W. were searched for but not found. S $\frac{1}{4}$ corner falls in fence row and has evidently been destroyed. W $\frac{1}{4}$ corner searched for but not found.

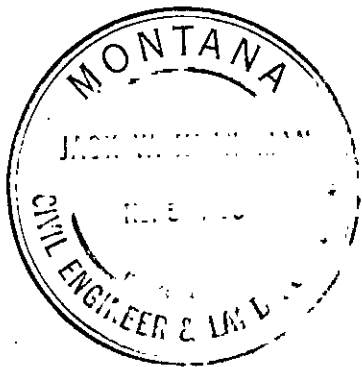
DESCRIPTION OF MONUMENT AND ACCESSORIES ESTABLISHED TO PERPETUATE THE ORIGINAL LOCATION OF THIS CORNER:

See other side. We set a standard brass cap at the center of the section. The center was determined by intersection of straight lines, between positions, established by proportion, between opposing $\frac{1}{4}$ corners. Date of work: 1967

SKETCH, WITH COURSE AND DISTANCE TO ADJACENT CORNERS IF DETERMINED IN THIS SURVEY. (MAY SKETCH OR PASTE REPRODUCTION ON REVERSE SIDE.)

SEE OTHER SIDE

Surveyor's Seal



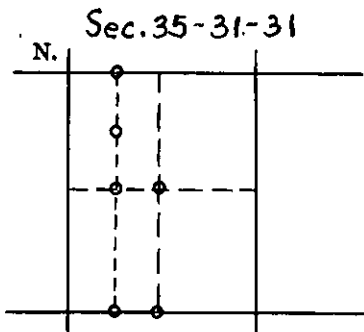
I, J.W. Ninneman, certify that the information shown herein is true and correct.

J.W. Ninneman
Signature of Ground Party Chief

I, J.W. Ninneman, certify that I have carefully performed or reviewed the work done on the diagrammed corner as reported on this recordation form and approve the same.

J.W. Ninneman
Signature of Surveyor

DIAGRAM OF CORNER:



○ = Corner recorded on the sheet

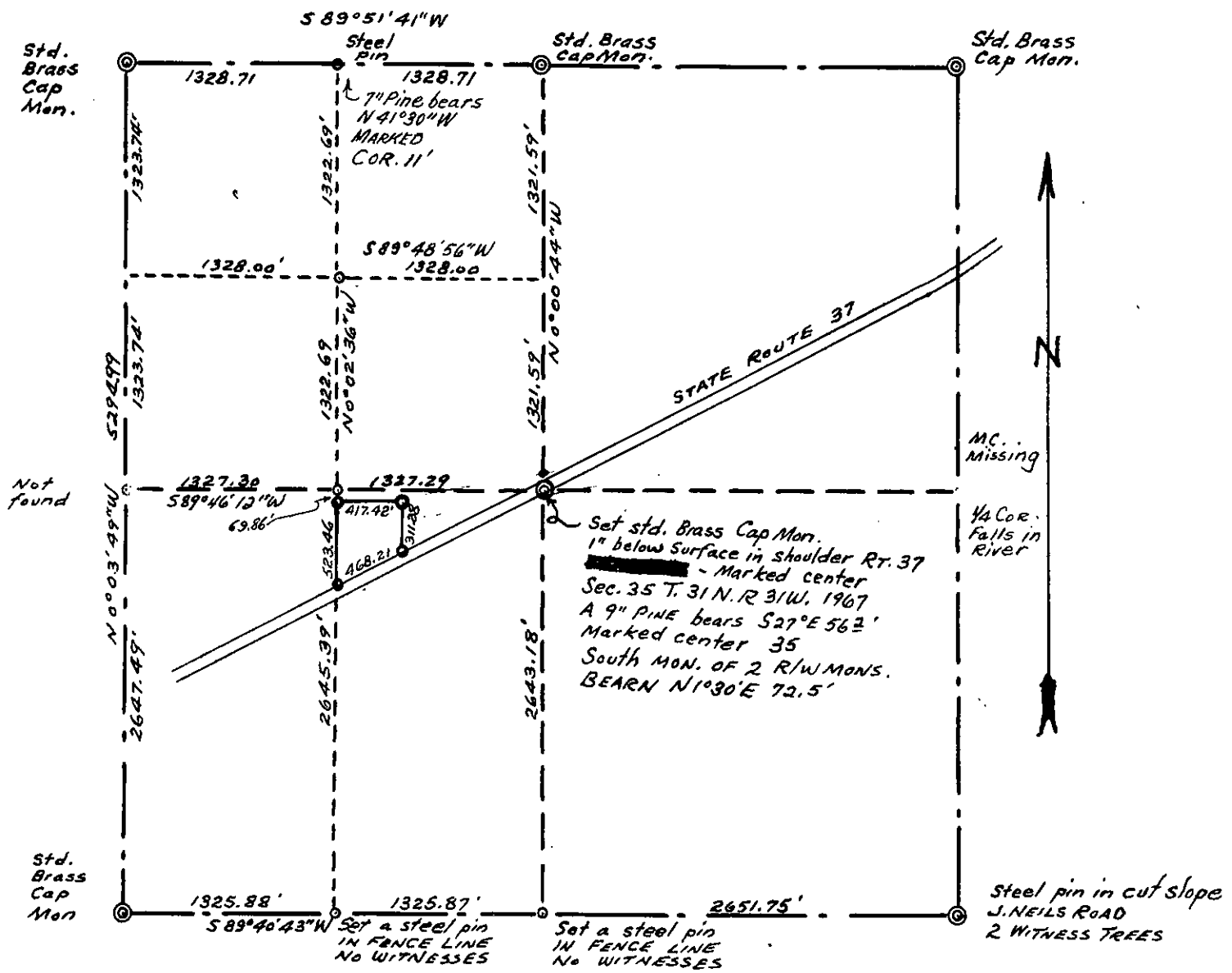
534 ES
Registration Number

Office of Clerk and Recorder, County of Lincoln

This "corner record" was filed for record on the 11th day of March 1968, was noted on the cross-index plat and is assigned page No. 91, in book No. 1

ELEANOR L. VAUGHN, *Mar. Watson*
County Official Deputy

SEC. 35 TWP. 31 N., R. 31 W., M. P. M.



Steel pins set
at point marked thus: - o