

CERTIFIED LAND CORNER RECORDATION

DESCRIPTION OF CORNER EVIDENCE FOUND, AND ORIGINAL RECORD (IF KNOWN)

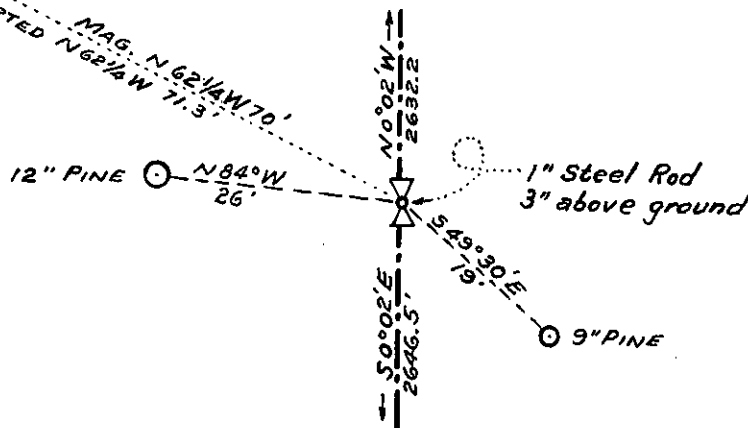
Original record reports $\frac{1}{4}$ cor. between Sec.s 26 & 27 T. 31N., R. 31W., M.P.M. at 2640 ft. N $0^{\circ}02'W$ from cor. to Sec.s 26, 27, 34, 35. Post, marked as prescribed, from which a 20" pine bears N $62^{\circ}14'W$ 108 lks. and a pine 18" bears S $21^{\circ}E$ 46 lks. (marked as prescribed) --- Post long since destroyed. No real evidence found for SE witness tree but this was at one time a clearing. At approximate position reported for NW witness tree found stump approx. right size but cut below blaze height. Believed this to be old witness tree but to establish new $\frac{1}{4}$ corner we ran transit line from SW cor. Sec. 26 to NW cor. Sec. 26 and established corner on true line between said corners. Since this adjusted line positively confirmed the 28" stump found as the original witness tree we allowed this evidence to influence our placing the new corner ON LINE at 2646.5 from south corner and 2632.2 from north corner. This places the new corner within inches of original location whereas, to place the corner strictly in accord with proportionate distances would have meant ignoring evidence of original location.

DESCRIPTION OF MONUMENT AND ACCESSORIES ESTABLISHED TO PERPETUATE THE ORIGINAL LOCATION OF THIS CORNER:

Set a 1" steel rod 18" long 15" in the ground at the established position for the corner from which a 12" pine bears N $84^{\circ}W$ 26 ft. marked S $27^{\circ}\frac{1}{4}B T$ and a 9" pine bears S $49^{\circ}30'E$ 19 ft. marked S $26^{\circ}\frac{1}{4}B T$. Both trees tagged with standard bearing tree signs. Date of work: 8/4/64

28" PINE STUMP
REPORTED (1893) 20" PINE
STUMP CUT BELOW BLAZE
NO MARK LEGIBLE

SKETCH, WITH COURSE AND DISTANCE TO ADJACENT CORNERS IF DETERMINED IN THIS SURVEY.
(MAY SKETCH OR PASTE REPRODUCTION ON REVERSE SIDE.)



Surveyor's Seal

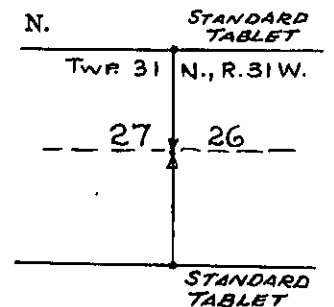
I, J. W. Jinneman
certify that the information shown herein is true and correct.

J. W. Jinneman
Signature of Ground Party Chief

I, J. W. Jinneman
certify that I have carefully performed or reviewed the work done on the diagrammed corner as reported on this recordation form and approve the same.

J. W. Jinneman
Signature of Surveyor

DIAGRAM OF CORNER:



\times = Corner recorded on the sheet

534 E.S.
Registration Number

Office of Clerk and Recorder, County of LINCOLN, LIBBY, MONTANA

This "corner record" was filed for record on the 13 day of August 1964, was noted on the cross-index plat and is assigned page No. 9, in book No. 1 M. M. MANSFIELD, By: Vivian Hyden Deputy.