

CERTIFIED LAND CORNER RECORDATION

SECTION 33 TWP. 31 N., R. 31 W., P.M.M.

DESCRIPTION OF CORNER EVIDENCE FOUND, AND ORIGINAL RECORD (IF KNOWN)

East 1/16 Corner on South Line - not previously set

DESCRIPTION OF MONUMENT AND ACCESSORIES ESTABLISHED  
TO PERPETUATE THE ORIGINAL LOCATION OF THIS CORNER:

Completed

Date of work: July, 1980

Set a 5/8"x24" Capped Steel Rod - Cap stamped JHN 4661 S.

SEE REVERSE SIDE

SKETCH, WITH COURSE AND DISTANCE TO ADJACENT CORNERS IF DETERMINED IN THIS SURVEY.  
(MAY SKETCH OR PASTE REPRODUCTION ON REVERSE SIDE.)

SEE DIAGRAM ON REVERSE SIDE

Surveyor's Seal

Jack H. Ninneman 4661 S

I, Jack H. Ninneman  
certify that the information shown herein is true and correct.

*Jack H. Ninneman*  
Signature of Ground Party Chief

I, J. H. Ninneman  
certify that I have carefully performed or reviewed the work done on the diagrammed corner as reported on this recordation form and approve the same.

*J. H. Ninneman*  
Signature of Surveyor

DIAGRAM OF CORNER:

N.  
SEE REVERSE SIDE

= Corner recorded on the sheet

4661 S.

Registration Number

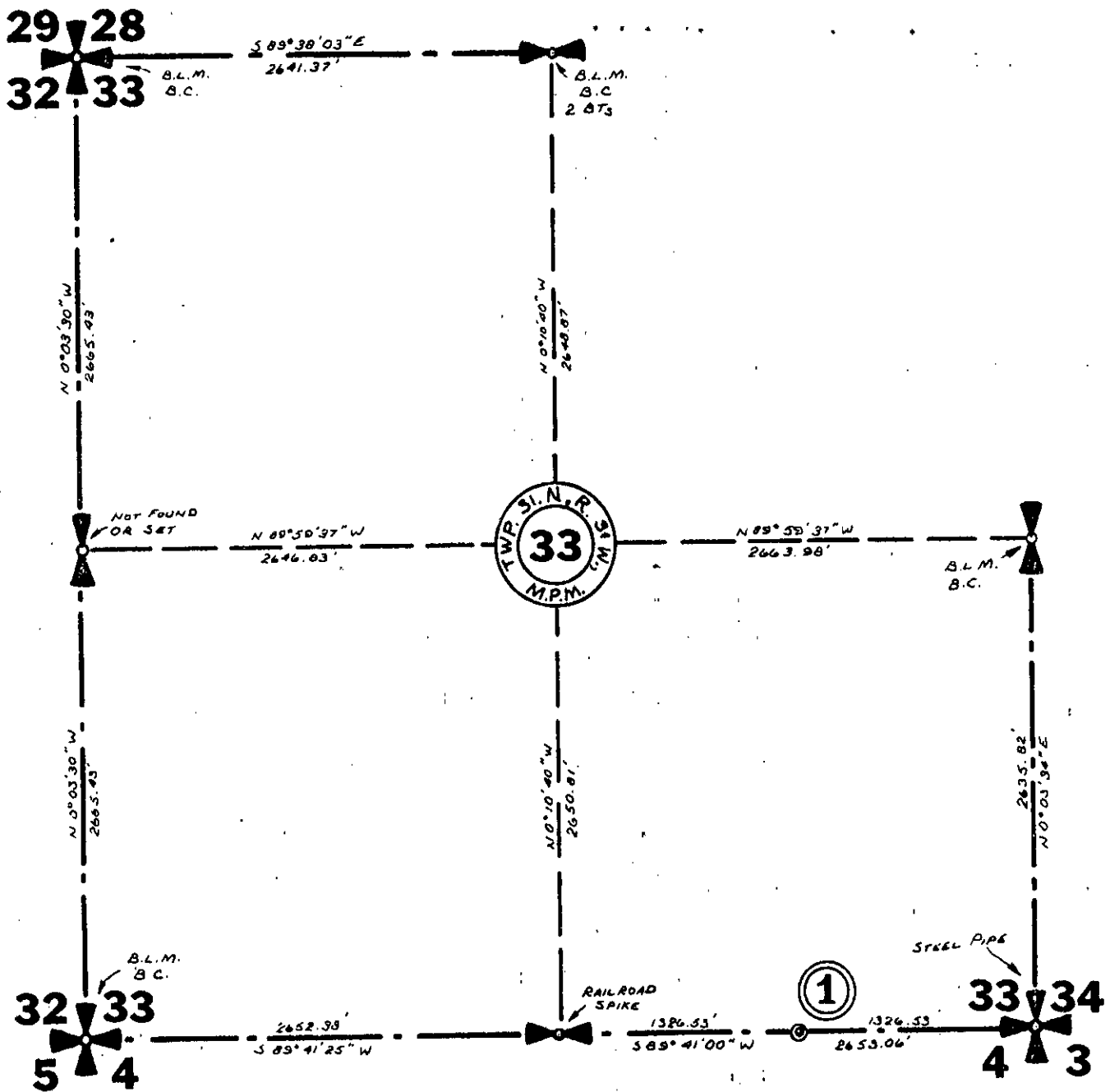
Office of Clerk and Recorder, County of Lincoln

This "corner record" was filed for record on the 31<sup>ST</sup> day of July, 1980, was noted on the cross-index plat and is assigned page No. 877, in book No. \_\_\_\_\_

Eleanor L. Vaughn  
County Official  
Sherry L. Hawks  
Deputy

# TWP. 31 N., R. 31 W.

78



- (1) Set a 5/8" by 24" Capped Steel Rod with no D.T.s  
Cap Stamped: J.H.N. 4661 S.



Moody