

CERTIFIED LAND CORNER RECORDATION

DESCRIPTION OF CORNER EVIDENCE FOUND, AND ORIGINAL RECORD (IF KNOWN)

No original record other than this corner (a hub & tack) has been used for control on many surveys, and has been accepted as occupying the position of the N 1/16 corner of Sections 35 & 36, T31N, R31W, P.M.M.

DESCRIPTION OF MONUMENT AND ACCESSORIES ESTABLISHED TO PERPETUATE THE ORIGINAL LOCATION OF THIS CORNER:

Date of work: July, 1979

I set a 5/8 inch rebar tagged MDL 4232-S and made 2 (two) bearing trees as shown on reverse.

SKETCH, WITH COURSE AND DISTANCE TO ADJACENT CORNERS IF DETERMINED IN THIS SURVEY. (MAY SKETCH OR PASTE REPRODUCTION ON REVERSE SIDE.)

SEE REVERSE :

Surveyor's Seal



I, GARY B. WAGNER certify that the information shown herein is true and correct.

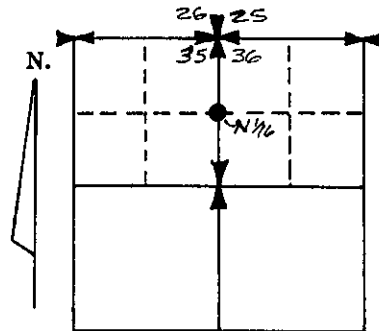
Gary B. Wagner Signature of Ground Party Chief

I, MELVIN D. LAUTEREN certify that I have carefully performed or reviewed the work done on the diagrammed corner as reported on this recordation form and approve the same.

Melvin D. Lauteren Signature of Surveyor

4232-S Registration Number

DIAGRAM OF CORNER:



● = Corner recorded on the sheet N 1/16 COR. SECTIONS 35 & 36, T31N, R31W, P.M.M.

Office of Clerk and Recorder, County of Lincoln

This "corner record" was filed for record on the 30th day of April 1980, was noted on the cross-index plat and is

assigned page No. 772, in book No.

Eleanor L. Daughn, by Betty Bell, County Official Deputy

Faint, illegible text at the top of the page, possibly bleed-through from the reverse side.

