

CERTIFIED LAND CORNER RECORDATION

(REFERENCE FSM 7153.53)

DESCRIPTION OF CORNER EVIDENCE FOUND, AND ORIGINAL RECORD (IF KNOWN)

No original record of corner establishment on file.
No evidence of corner found on ground.

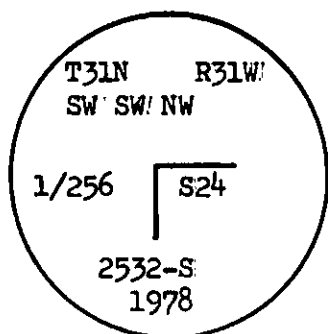
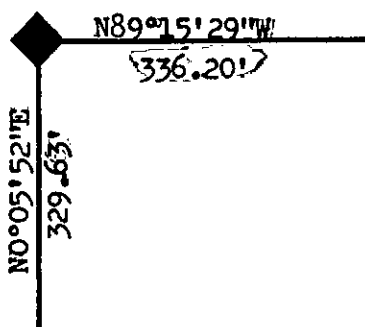
**DESCRIPTION OF MONUMENT AND ACCESSORIES ESTABLISHED
TO PERPETUATE THE ORIGINAL LOCATION OF THIS CORNER:**

Date of work: 1978

Set a 2½ x 30" aluminum pipe with cap set 24" in the ground.
Raised a rock mound around cap. From which A
Fir 10" dia. bears N35°W 23.4 ft. marked SWSWNW 1/256 S24 BT.

Fir 12" dia. bears S45°E 27.2 ft. marked SWSWNW 1/256 S24 BT.

Refer to Certificate of Survey, subdivision of Section 24,
T31N, R31W, as recorded in Lincoln County Courthouse, Libby,
Montana.

**SKETCH, WITH COURSE AND DISTANCE TO ADJACENT CORNERS IF DETERMINED IN THIS SURVEY.
(MAY SKETCH OR PASTE REPRODUCTION ON REVERSE SIDE.)**

Surveyor's Seal

Stephen D. Staab OR. L.S. 1672

I, _____
certify that the information shown herein is true and
correct.

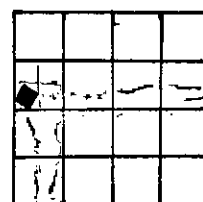
Stephen D. Staab
Signature of Ground Party Chief

I, Stanley J. Skousen 2532-S
certify that I have carefully performed or reviewed the
work done on the diagrammed corner as reported on this
recordation form and approve the same.

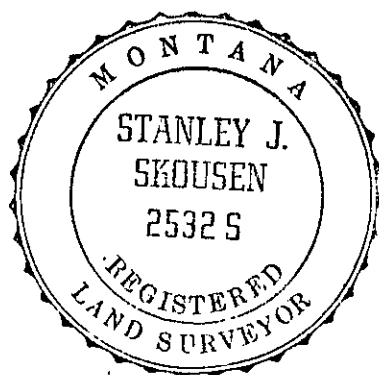
Stanley J. Skousen
Signature of Surveyor

DIAGRAM OF CORNER:

N. T31N R31W S24
SW-SW-NW 1/256



◆ = Corner recorded on the sheet



2532S

Registration Number

Office of Clerk and Recorder, County of LINCOLN

This "corner record" was filed for record on the 17th day of December, 1979, was noted on the cross-index plat and is
assigned page No. 617, in book No. 1

Charles L. Trenchard, by Betty Bell
County Official deputy

Cross Index No. P22 T. 31N R. 31W Mer.