

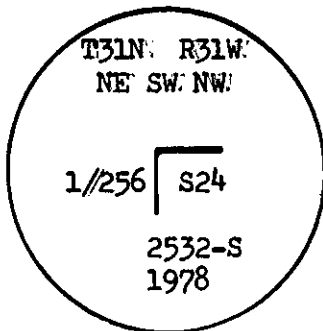
CERTIFIED LAND CORNER RECORDATION
(REFERENCE FSM 7153.53)

DESCRIPTION OF CORNER EVIDENCE FOUND, AND ORIGINAL RECORD (IF KNOWN)

No original record of corner establishment on file.
No evidence of corner found on ground.

DESCRIPTION OF MONUMENT AND ACCESSORIES ESTABLISHED
TO PERPETUATE THE ORIGINAL LOCATION OF THIS CORNER:

Date of work: 1978



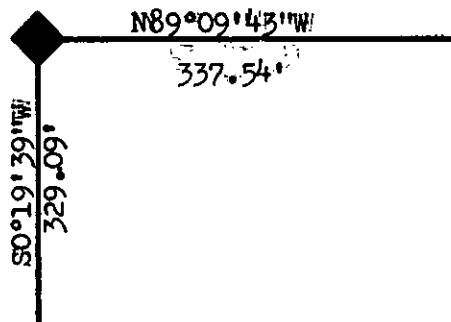
Set a 2½" x 30" aluminum pipe with cap, 24" in the ground.
Raised a rock mound around cap, from which A:

Larch 8" dia. bears N7°E 21.3 feet marked NESWNW 1/256
S24 BT.

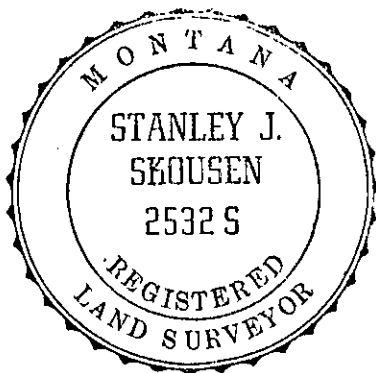
Larch 12" dia. bears S69°E 24.9 feet marked NESWNW 1/256
S24 BT.

Refer to Certificate of Survey, subdivision of Section 24, T31N,
R31W, as recorded in Lincoln County, Courthouse, Libby, Montana.

SKETCH, WITH COURSE AND DISTANCE TO ADJACENT CORNERS IF DETERMINED IN THIS SURVEY.
(MAY SKETCH OR PASTE REPRODUCTION ON REVERSE SIDE.)



Surveyor's Seal



I, Stephen D. Staab OR. L.S. 1672
certify that the information shown herein is true and
correct.

Stephen D. Staab
Signature of Ground Party Chief

Stanley J. Skousen 2532-S

I,
certify that I have carefully performed or reviewed the
work done on the diagrammed corner as reported on this
recordation form and approve the same.

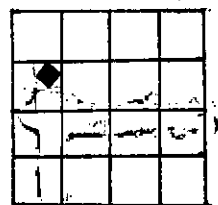
Stanley J. Skousen
Signature of Surveyor

2532S

Registration Number

DIAGRAM OF CORNER:

N. T31N R31W S24
NE-SW-NW 1/256



◆ = Corner recorded on the sheet

Office of Clerk and Recorder, County of LINCOLN

This "corner record" was filed for record on the 17th day of December 1979, was noted on the cross-index plat and is
assigned page No. 613, in book No. 1

Edward L. Trenchard by *Betty Beall*
County Official
Cross Index No. 022 T. 31N R. 31W Mer.