

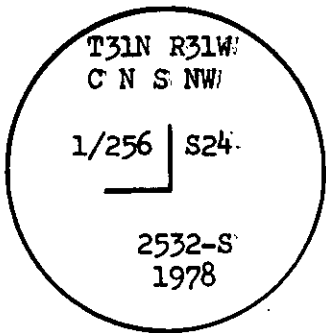
CERTIFIED LAND CORNER RECORDATION
(REFERENCE FSM 7153.53)

DESCRIPTION OF CORNER EVIDENCE FOUND, AND ORIGINAL RECORD (IF KNOWN)

No original record of corner establishment on file.
No evidence of corner found on ground.

DESCRIPTION OF MONUMENT AND ACCESSORIES ESTABLISHED
TO PERPETUATE THE ORIGINAL LOCATION OF THIS CORNER:

Date of work: 1978



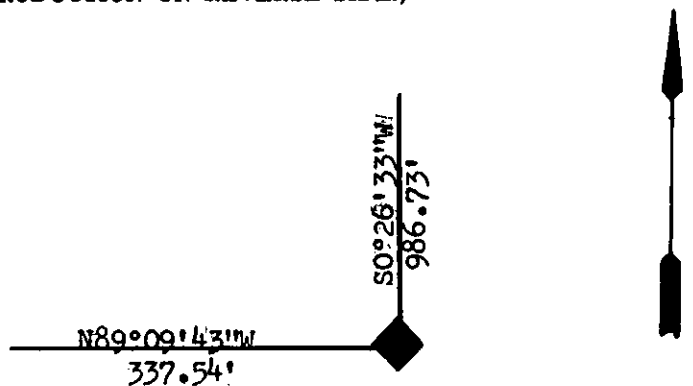
Set a 2½" X 30" aluminum pipe with cap, 24" in the ground.
Raised a rock mound around cap from which a;

Fir 12" dia. bears N40°E 21.0 feet marked CNSW 1/256
S24 BT.

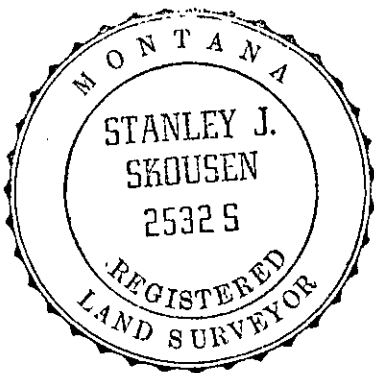
Fir 6" dia. bears S30°W 15.5 feet marked CNSW1/256

Refer to Certificate of Survey, subdivision of Section 24, T31N,
R31W, as recorded in Lincoln County Courthouse, Libby, Montana.

SKETCH, WITH COURSE AND DISTANCE TO ADJACENT CORNERS IF DETERMINED IN THIS SURVEY.
(MAY SKETCH OR PASTE REPRODUCTION ON REVERSE SIDE.)



Surveyor's Seal



I, Stephen D. Staab OR. L.S. 1672
certify that the information shown herein is true and
correct.

Stephen D. Staab
Signature of Ground Party Chief

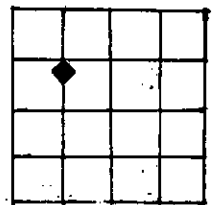
I, Stanley J. Skousen 2532-S
certify that I have carefully performed or reviewed the
work done on the diagrammed corner as reported on this
recordation form and approve the same.

Stanley J. Skousen
Signature of Surveyor
2532S

Registration Number

DIAGRAM OF CORNER:

N. T31N R31W S24
C-N-S-NW 1/256



= Corner recorded on the sheet

Office of Clerk and Recorder, County of LINCOLN

This "corner record" was filed for record on the 17th day of December, 1979, was noted on the cross-index plat and is
assigned page No. 612, in book No. 1

Charles L. Thompson by *Betty Bell*
County Official Deputy

Cross Index No. 022 T. 31N R. 31W Mer.