

CERTIFIED LAND CORNER RECORDATION

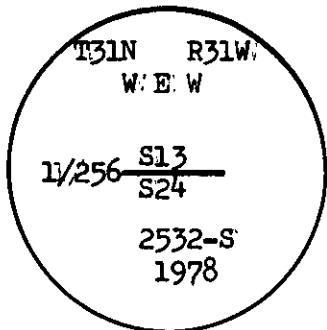
(REFERENCE FSM 7153.53)

DESCRIPTION OF CORNER EVIDENCE FOUND, AND ORIGINAL RECORD (IF KNOWN)

No original record of corner establishment on file. No evidence of corner found on ground.

DESCRIPTION OF MONUMENT AND ACCESSORIES ESTABLISHED TO PERPETUATE THE ORIGINAL LOCATION OF THIS CORNER:

Date of work: 1978



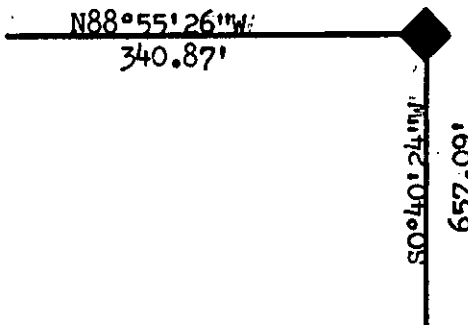
Set a 2 1/2" X 30" aluminum pipe with cap, 24" in the ground. Raised a rock mound around cap, from which a:

Fir 10" dia. bears N32°E 6.7 feet marked WEW 1/256 S24 BT.

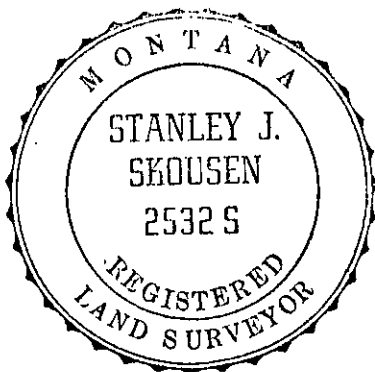
Fir 8" dia. bears S55°E 21.6 feet marked WEW 1/256 S24 BT.

Refer to Certificate of Survey, subdivision of Section 24, T31N, R31W, as recorded in Lincoln County Courthouse, Libby, Montana.

SKETCH, WITH COURSE AND DISTANCE TO ADJACENT CORNERS IF DETERMINED IN THIS SURVEY. (MAY SKETCH OR PASTE REPRODUCTION ON REVERSE SIDE.)



Surveyor's Seal



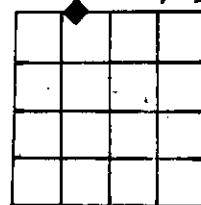
Stephen D. Staab OR. L.S. 1672

I, Stephen D. Staab OR. L.S. 1672 certify that the information shown herein is true and correct.

Signature of Stephen D. Staab, Signature of Ground Party Chief

DIAGRAM OF CORNER:

N. T31N R31W S24 W-E-W 1/256



◆ = Corner recorded on the sheet

I, Stanley J. Skousen 2532-S certify that I have carefully performed or reviewed the work done on the diagrammed corner as reported on this recordation form and approve the same.

Signature of Stanley J. Skousen, Signature of Surveyor

2532S

Registration Number

Office of Clerk and Recorder, County of LINCOLN

This "corner record" was filed for record on the 17th day of December 1979, was noted on the cross-index plat and is assigned page No. 609, in book No. 1

Signature of County Official: Eleanor L. Douglas, Deputy

Cross Index No. N 22 T 31 N R 31 W Mer.