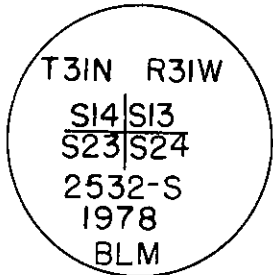


CERTIFIED LAND CORNER RECORDATION
(REFERENCE FSM 7153.53)

DESCRIPTION OF CORNER EVIDENCE FOUND, AND ORIGINAL RECORD (IF KNOWN)
Set a 2 1/2" X 30" iron post 26" in the ground with cap marked.
From which
A Dead Pine 17" Dia, Bears N 12 1/4° E., 62 lks dist, Mkd. T 31 N
R 31 W S13 BT (Original)
A Pine 25" Dia, Bears S 10 1/4° E, 45 lks dist, Mkd T31N R31W
S24 BT (Original)
A Pine 19" Dia, Bears N 54° W, 41 lks dist, Mkd T31N R31W
S14 BT (Original)
A Pine 24" Dia, Bears N 71 1/4° E., 93 lks dist, Mkd T31N R31W
S 13 BT
A Fir 14" Dia, Bears S 68 1/2° W, 84 lks dist, Mkd T31N R31W
S23 BT



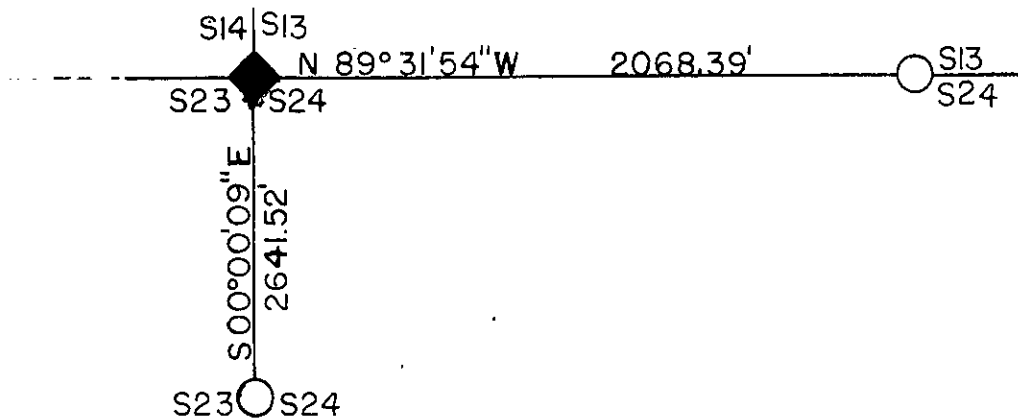
DESCRIPTION OF MONUMENT AND ACCESSORIES ESTABLISHED
TO PERPETUATE THE ORIGINAL LOCATION OF THIS CORNER:

Date of work: 1978

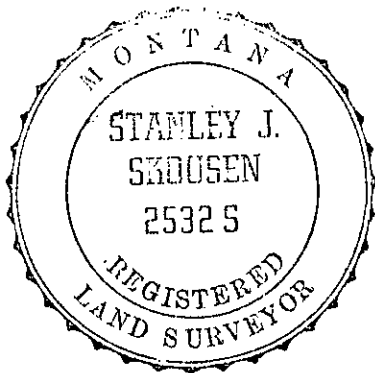
Corner in good condition as found. Cleared brush around
corner and hung ribbon in the area.

Refer to Certificate of Survey, subdivision of section 24
T31N R31W, as recorded in Lincoln County Courthouse, Libby,
Montana.

SKETCH, WITH COURSE AND DISTANCE TO ADJACENT CORNERS IF DETERMINED IN THIS SURVEY.
(MAY SKETCH OR PASTE REPRODUCTION ON REVERSE SIDE.)



Surveyor's Seal



I, Stephen D Staab OR. LS. 1672
certify that the information shown herein is true and
correct.

Stephen D Staab
Signature of Ground Party Chief

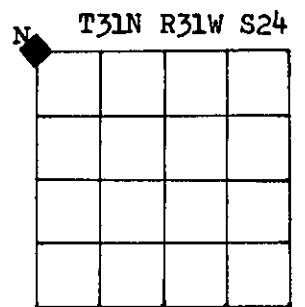
I, Stanley J. Skousen 2532-S
certify that I have carefully performed or reviewed the
work done on the diagrammed corner as reported on this
recording form and approve the same.

Stanley J. Skousen
Signature of Surveyor

2532S

Registration Number

DIAGRAM OF CORNER:



◆ = Corner recorded on the sheet

Office of Clerk and Recorder, County of LINCOLN

This "corner record" was filed for record on the 17th day of December, 1979, was noted on the cross-index plat and is
assigned page No. 397, in book No. 1

Eleanor L. Vaughn by *Betty Lee*
County Official Deputy

Cross Index No. N 21 T 31 N R 31 W Mer.