

CERTIFIED LAND CORNER RECORDATION

SECTION 10 TWP. 31 N., R. 31 W., M.P.M.

DESCRIPTION OF CORNER EVIDENCE FOUND, AND ORIGINAL RECORD (IF KNOWN)

Corners found or set shown and described on diagram on reverse side.

DESCRIPTION OF MONUMENT AND ACCESSORIES ESTABLISHED TO PERPETUATE THE ORIGINAL LOCATION OF THIS CORNER:

Date of work: Nov. 1978

Monuments described on reverse side

SKETCH, WITH COURSE AND DISTANCE TO ADJACENT CORNERS IF DETERMINED IN THIS SURVEY. (MAY SKETCH OR PASTE REPRODUCTION ON REVERSE SIDE.)

Diagram on reverse side

Surveyor's Seal

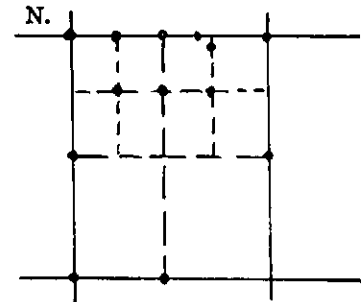
I, Jack H. Ninneman #4661 S certify that the information shown herein is true and correct.

Signature of Ground Party Chief

I, Jack H. Ninneman #4661 S certify that I have carefully performed or reviewed the work done on the diagrammed corner as reported on this recordation form and approve the same.

Signature of Surveyor

DIAGRAM OF CORNER: See Reverse side



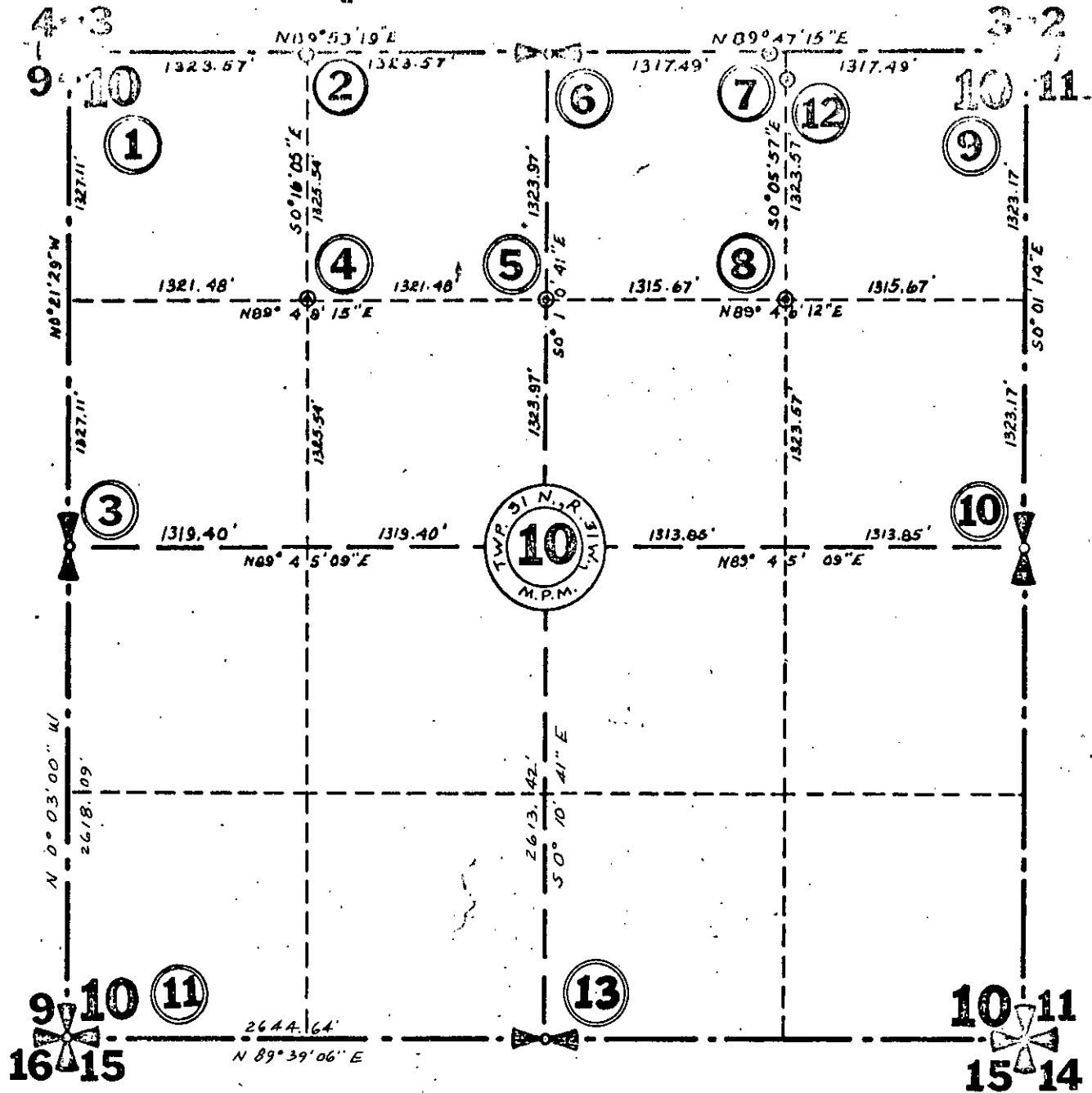
● = Corner recorded on the sheet

4661 S Registration Number

Office of Clerk and Recorder, County of Liscicola This "corner record" was filed for record on the 14th day of December 1978, was noted on the cross-index plat and is assigned page No. 540, in book No. 1

Eleanor J. Vaughn, Deputy County Official

Sec. 10 Twp. 31 N., R. 31 W., M.P.M.



- | | |
|--|---|
| <ul style="list-style-type: none"> (1) BLM BC 3 BTs (2) Set 5/8" x 24" Steel Rod
Yellow Cap Stamped
By JHN 4661 S (3) BLM BC 3 BTs (4) Set 5/8" x 24" Steel Rod
Yellow Cap Stamped
By JHN 4661 S
8" Spruce bears N04E 114 ft.
12" Fir bears S10E 10 ft. (5) Set 5/8" x 24" Steel Rod
Yellow Cap Stamped
By JHN 4661 S
12" Fir bears N74W 37.4 ft.
12" Fir bears S10E 12.5 ft. (6) BLM BC 3 BTs (7) Set 5/8" x 24" Steel Rod
As Witness Corner
Yellow Cap Stamped
JHN 4661 S
14" Cedar bears S16W 29.5 ft.
16" Spruce bears S42E 31.7 ft. (8) Set 5/8" x 24" Steel Rod
Yellow Cap Stamped
By JHN 4661 S
20" Fir bears S37E 15.3 ft.
16" Fir bears N50E 11.8 ft. | <ul style="list-style-type: none"> (9) BLM BC 4 BTs (10) BLM BC 2 BTs (11) BLM BC 6 BTs (12) Set 5/8" x 24" Steel Rod
As Witness Corner
Yellow Cap Stamped
By JHN 4661 S
14" Spruce bears S69W 9.3 ft.
14" Cedar bears S31E 20.6 ft. (13) BLM BC 2 BTs |
|--|---|