

CERTIFIED LAND CORNER RECORDATION

SECTION 33 TOWNSHIP 31 NORTH, RANGE 31 WEST, M.P.M.

DESCRIPTION OF CORNER EVIDENCE FOUND, AND ORIGINAL RECORD (IF KNOWN)

Description of pertinent corners shown on diagram on other side.

DESCRIPTION OF MONUMENT AND ACCESSORIES ESTABLISHED
TO PERPETUATE THE ORIGINAL LOCATION OF THIS CORNER:

Date of work: Oct. 1977

Descriptions of corners established shown on diagram
on other side

SKETCH, WITH COURSE AND DISTANCE TO ADJACENT CORNERS IF DETERMINED IN THIS SURVEY.
(MAY SKETCH OR PASTE REPRODUCTION ON REVERSE SIDE.)

DIAGRAM ON OTHER SIDE

Surveyor's Seal



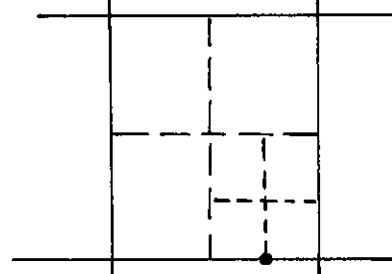
I, JACK H. NINNEMAN
certify that the information shown herein is true and correct.

Jack H. Ninneman
Signature of Ground Party Chief

I, Jack H. Ninneman
certify that I have carefully performed or reviewed the work done on the diagrammed corner as reported on this recordation form and approve the same.

Jack H. Ninneman
Signature of Surveyor

DIAGRAM OF CORNER:
See reverse side
N. 33-31-31



• = Corner recorded on the sheet

4661 S
Registration Number

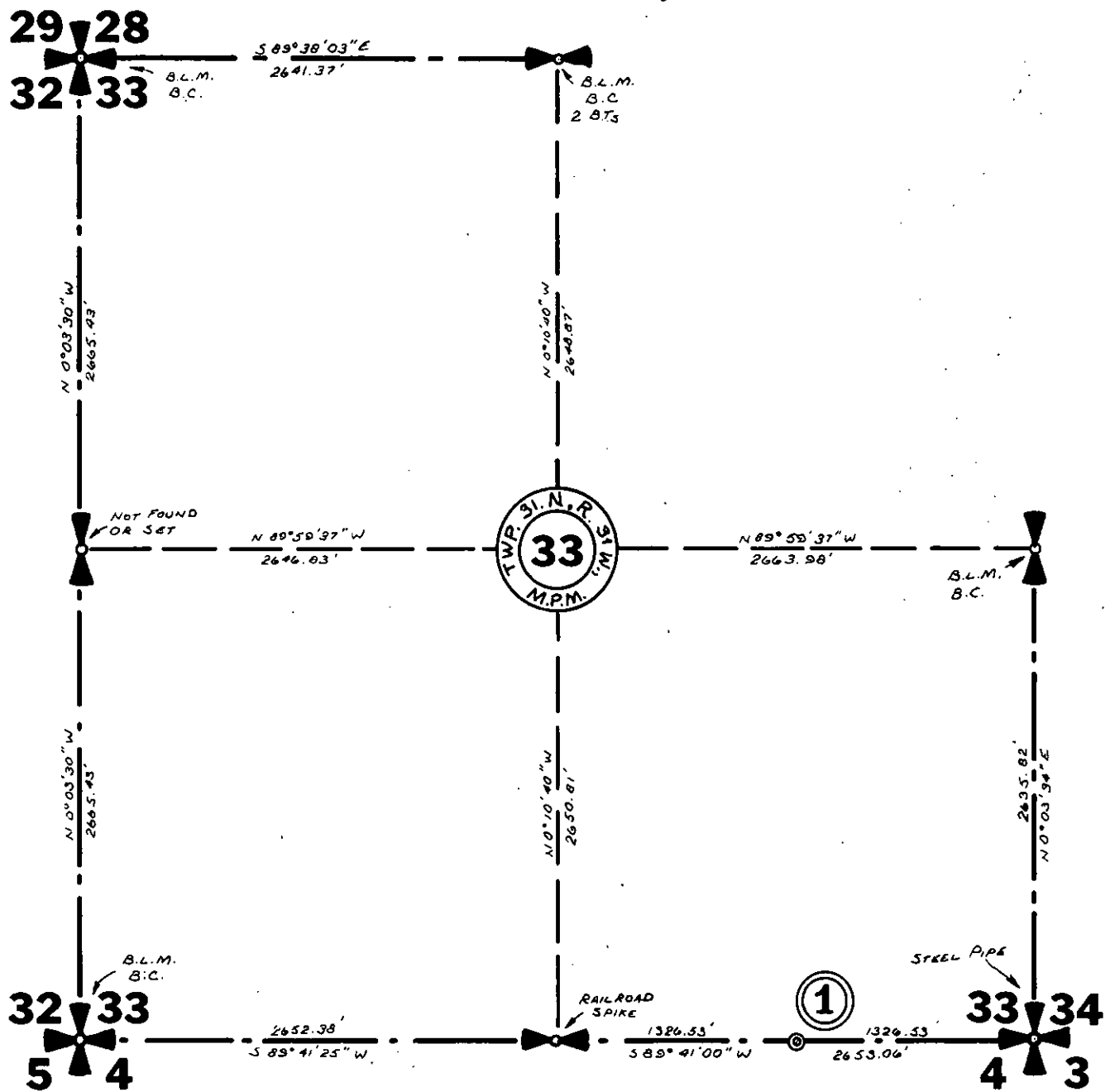
Office of Clerk and Recorder, County of Lincoln

This "corner record" was filed for record on the 12th day of May 1978, was noted on the cross-index plat and is assigned page No. 530, in book No. 1

Eleanor L. Vaughn by Dorothy Thacker
County Official

TWP. 31 N., R. 31 W.

(78)



(1) Set a 5/8" by 24" Capped Steel Rod with no B.T.s
Cap Stamped: J.H.N. 4661 S.