

## INSTRUCTIONS

1. Original and/or subsequent record used to evaluate the corner position.
2. Description of evidence found, note discrepancies in the record, state method of establishing lost or obliterated corners.
3. Description of monument and accessories set to perpetuate the corner position.
4. Sketch of corner, show all pertinent data which can best be shown in a sketch example, corner marking, topography ties, position of accessories, etc.
5. Certification must be signed and sealed by Land Surveyor registered in the State of Montana.
6. Fill in Cross Index & Section Diagram at bottom of sheet.

## CERTIFIED CORNER RECORDATION

Corner 1/4 Cor. of Secs. 12 only T. 31 N. R. 31 W. P.M.M. Lincoln County

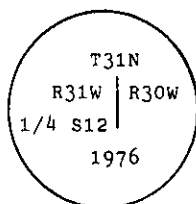
I. 1901 G.L.O. record by Abram L. Jaqueth: Set a stone monument and two bearing trees.

1976 B.L.M. remonumentation record by Joseph E. French: "The 1/4 sec. cor. of sec. 12, on the E. bdy. of the Tp., monumented with a limestone, 20x14x8 ins., firmly set, 15 ins. in the ground, mkd. 1/4 on the W. face, and witnessed by the remains of the original bearing trees:

A larch stump, 18 ins. diam., bears  $S29^{\circ}15'W$ , 17 lks. dist., marked BT. (Record: 10 lks.)

A larch, 24 ins. diam., bears  $N18^{\circ}15'W$ , 8 lks. dist., marked 1/4 S12 BT.

At the corner point; set an iron post, 30 ins. long, 2 1/2 ins. diam., 24 ins. in the ground, with brass cap mkd.



from which a new bearing tree:

A fir, 6 ins. diam., bears  $S13^{\circ}E$ , 10 lks. dist., mkd. X BT.

Bury the original stone alongside and raise a flat mound of stone, 2 ft. diam., around the iron post."

II. Found a 2 1/2 in. diam. iron pipe, 3 ins. out of ground in mound of stone, with 3 1/4 ins. diam., B.L.M. brass cap marked as shown above; from which

A fir, 10 ins. diam., bears  $S11^{\circ}E$ , 7.0 ft. (10 lks.) dist., healed face.

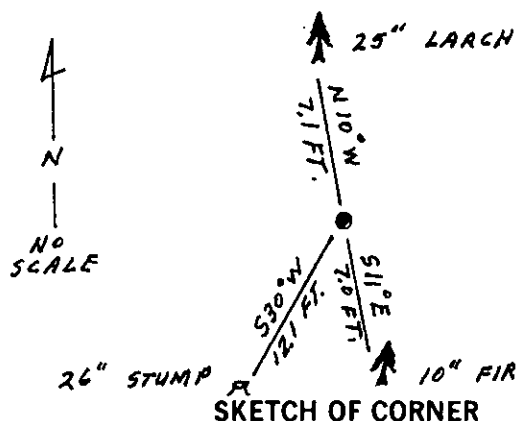
A larch stump, 26 ins. diam., bears  $S30^{\circ}W$ , 12.1 ft. (18 lks.) dist., marked BT. (rcd: 10 lks.)

A larch, 25 ins. diam., bears  $N10^{\circ}W$ , 7.1 ft. (12 lks.) dist., marked 1/4 S12 BT. (rcd:  $N18^{\circ}15'W$ , 8 lks.)

III. Painted red bands around the bearing trees and attached Land Survey Monument and Bearing Tree signs.

Set a 6 ft. galvanized steel guard post with Land Survey Marker and Property Boundary decals, North, 3 ft.

Magnetic Declination:  $20^{\circ}$  East



SKETCH OF CORNER

## CERTIFICATION

I, Raymond A. Pederson  
certify the information shown herein is true and correct.

Signature Ground Party Chief

I, Ronald A. Pearson  
certify that this Corner Record correctly represents work performed by me or under my direction in compliance with the "Corner Recordation Act" (70-22-101, et seq., M.C.A.)

Signature of Surveyor & Seal

Date: 11/30/92 Reg. No. 9008 LS

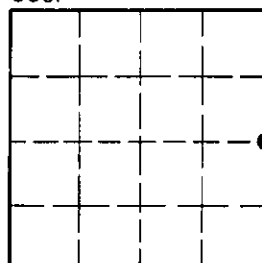
Employer: U.S. FOREST SERVICE

Office of Clerk and Recorder, County of Lincoln. This "corner record" was filed for record on 1-4-93 was noted on the cross-index plat and is assigned page No. 5243, in book No. Corral M Cummings & Co

County Official

G-25 31 N 31 W  
Cross Index No. T. R. PMM

Sec. 12



• - corner this sheet