

INSTRUCTIONS

1. Original and/or subsequent record used to evaluate the corner position.
2. Description of evidence found, note discrepancies in the record, state method of establishing lost or obliterated corners.
3. Description of monument and accessories set to perpetuate the corner position.
4. Sketch of corner, show all pertinent data which can best be shown in a sketch example, corner marking, topography ties, position of accessories, etc.
5. Certification must be signed and sealed by Land Surveyor registered in the State of Montana.
6. Fill in Cross Index & Section Diagram at bottom of sheet.

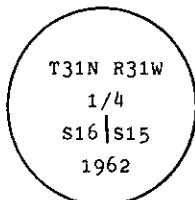
CERTIFIED CORNER RECORDATION

Corner 1/4 Cor. of Secs. 16 and 15 T. 31 N. R. 31 W. P.M.M. Lincoln County

I. 1901 G.L.O. record by Abram L. Jaqueth: Set a stone monument and two bearing trees.

1962 B.L.M. record by Gerald F. Pittman et al: "The 1/4 sec. cor. of secs. 15 and 16, monumented with a limestone, 12x8x8 ins., firmly set and mkd. as described in the official record, and witnessed by the remains of the original bearing trees.

At the corner point; set an iron post, 30 ins. long, 2 1/2 ins. diam., 25 ins. in the ground, with brass cap mkd.



from which

The remains of the original bearing trees:

A stump, 20 ins. diam., bears S39 1/2° E, 73 lks. dist., visible marks BT.
(Record: S39 25° E, 73 lks.)

A stump hole, bears N36° W, 28 lks. dist., remains of tree lying on ground, mkd. 1/4 S16 BT.
(Record: N35 50° W, 28 lks.)

The new bearing trees:

A pine, 16 ins. diam., bears S13 1/2° E, 104 lks. dist., mkd. 1/4 S15 BT.

A larch, 16 ins. diam., bears S31° W, 80 lks. dist., mkd. 1/4 S16 BT.

Bury the original stone alongside and raise a flat mound of stone, 3 ft. diam., around the iron post."

II. Found a 2 1/2 in. diam. iron pipe, 6 ins. out of ground in mound of stone, with 3 1/4 ins. diam., B.L.M. brass cap marked as shown above; from which

A stump, 16 ins. diam., bears S38° E, 48.0 ft. (73 lks.) dist., no visible scribe.

A stump hole, bears N34° W, 19.0 ft. (29 lks.) dist.

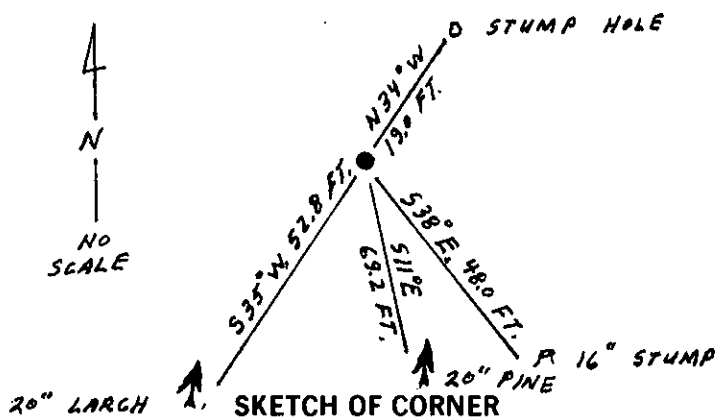
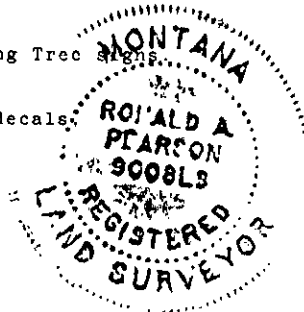
A pine, 20 ins. diam., bears S11° E, 69.2 ft. (104 lks.) dist., visible scribe.

A larch, 20 ins. diam., bears S35° W, 52.8 ft. (80 lks.) dist., healed face.

III. Painted red bands around the bearing trees and attached Land Survey Monument and Bearing Tree Signs.

Set a 6 ft. galvanized steel guard post with Land Survey Marker and Property Boundary decals North, 3 ft.

Magnetic Declination: 20° East



CERTIFICATION

I, Raymond A. Pederson
certify the information shown herein is true and correct.

Signature Ground Party Chief

I, Ronald A. Pearson
certify that this Corner Record correctly represents work performed by me or under my direction in compliance with the "Corner Recordation Act" (70-22-101, et seq., M.C.A.)

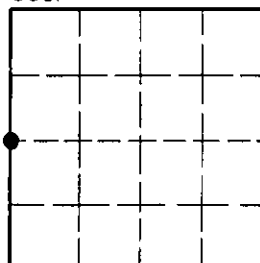
Signature of Surveyor & Seal

Date: 11/30/92 Reg. No. 9008 LS

Employer: U.S. FOREST SERVICE

Office of Clerk and Recorder, County of Lincoln. This "corner record" was filed for record on 1-4-93 was noted on the cross-index plat and is assigned page No. 5242, in book No. County Official

Sec. 15



• - corner this sheet

L-13 31 N 31 W
Cross Index No. T. R. PMM