

INSTRUCTIONS

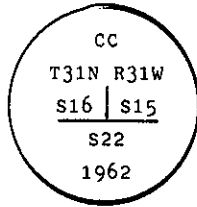
1. Original and/or subsequent record used to evaluate the corner position.
2. Description of evidence found, note discrepancies in the record, state method of establishing lost or obliterated corners.
3. Description of monument and accessories set to perpetuate the corner position.
4. Sketch of corner, show all pertinent data which can best be shown in a sketch example, corner marking, topography ties, position of accessories, etc.
5. Certification must be signed and sealed by Land Surveyor registered in the State of Montana.
6. Fill in Cross Index & Section Diagram at bottom of sheet.

CERTIFIED CORNER RECORDATION

Corner CC of Secs. 15 and 16 T. 31 N. R. 31 W. P.M.M. Lincoln County

I. 1901 G.L.O. record by Abram L. Jaqueth: Set a stone monument and two bearing trees.

1962 B.L.M. remonumentation record by Gerald F. Pittman et al: "The closing cor. of secs. 15 and 16 monumented with a limestone, 24x12x12 ins., firmly set and mkd. as described in the official record, and witnessed by the remains of the original bearing trees. At the corner point; set an iron post, 30 ins. long, 2 1/2 ins. diam., 27 ins. in the ground, with brass cap mkd.



From which:

The remains of the original bearing trees:

- A decayed stump, bears N38 3/4° E, 73 lks. dist., visible marks S15 CC BT. (Record)
- A charred stump, bears N86° W, 111 lks. dist., no marks visible. (Record)

The new bearing trees:

- A pine, 10 ins. diam., bears N73° E., 30 lks. dist., mkd. T31N R31W S15 CC BT.
- A pine, 10 ins. diam., bears N67° W, 29 lks. dist., mkd. T31W R31W S16 CC BT.

Bury the original stone alongside and raise a mound of stone, 3 ft. diam., around the iron post."

II. Found a 2 1/2 ins. diam. iron pipe, 3 ins. out of mound of stone 2 ft. diam. by 2 ft. high with 3 1/4 ins. diam. B.L.M. brass cap, marked as shown above, from which

- A pine stump, 11 ins. diam., bears N74° E., 20.0 ft (30 lks.) dist., no visible scribe.
- A fallen pine, 9 ins. diam., bears N67° W, 19.0 ft. (29 lks.) dist., mkd. T31W R31W S16 CC BT.

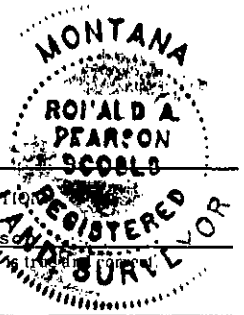
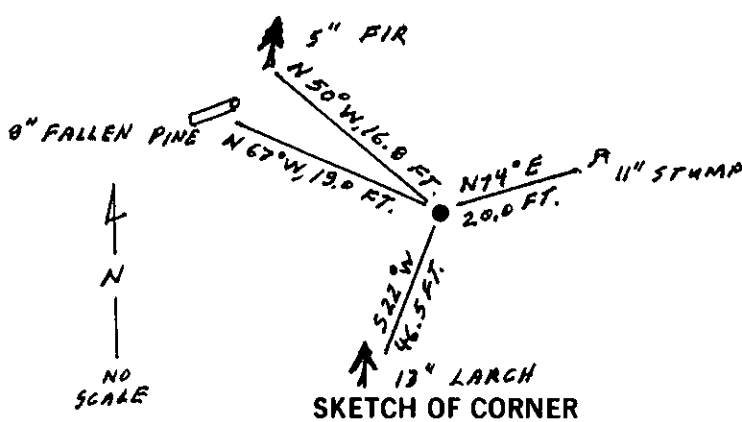
III. Established two new bearing trees:

- A larch, 13 ins. diam., bears S22° W, 46.5 ft. dist., mkd. T31N R31W S22 CC BT.
- A fir, 5 ins. diam., bears N50° W, 16.8 ft. dist., mkd. X BT. (No trees available in S15)

Painted red bands around the bearing trees and attached Land Survey Monument and Bearing Tree signs.

Set a 6 ft. galvanized steel guard post with Land Survey Marker and Property Boundary decals, North, 3 ft.

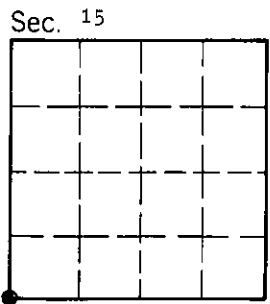
Magnetic Declination: 20° East



CERTIFICATION
 I, Raymond A. Pederson
 certify the information shown herein is true and correct.
 Signature Ground Party Chief
 I, Ronald A. Pearson
 certify that this Corner Record correctly represents work performed by me or under my direction in compliance with the "Corner Recordation Act" (70-22-101, et seq., M.C.A.)
 Signature of Surveyor & Seal
 Date: 11/23/92 Reg. No. 9008LS
 Employer: U.S. FOREST SERVICE

Office of Clerk and Recorder, County of Lincoln. This "corner record" was filed for record on 1-4-93 was noted on the cross-index plat and is assigned page No. 5239, in book No. _____

Coral M. Cummings
 County Official



N-13 Cross Index No. T. _____ R. _____ PMM

• - corner this sheet