

## INSTRUCTIONS

1. Original and/or subsequent record used to evaluate the corner position.
2. Description of evidence found, note discrepancies in the record, state method of establishing lost or obliterated corners.
3. Description of monument and accessories set to perpetuate the corner position.
4. Sketch of corner, show all pertinent data which can best be shown in a sketch example, corner marking, topography ties, position of accessories, etc.
5. Certification must be signed and sealed by Land Surveyor registered in the State of Montana.
6. Fill in Cross Index & Section Diagram at bottom of sheet.

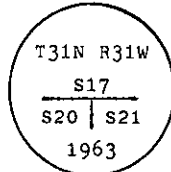
## CERTIFIED CORNER RECORDATION

Corner of Secs. 20 and 21 only T. 31 N., R. 31 W., P.M.M. Lincoln County

I. 1893 G.L.O. record by Danial P. Mumbrue: Set a wood post for corner of secs. 16, 17, 20 & 21, marked four bearing trees.

1901 G.L.O. retracement record by Abram L. Jaqueth: Effaces marks on wood post and bearing trees to refer to secs. 20 and 21 only.

1962 B.L.M. remonumentation record by Gerald F. Pittman et al: "The cor. of secs. 20 and 21, as determined from the remains of the original bearing trees. At corner point; set an iron post, 30 ins. long, 2 1/2 ins. diam., 26 l.s. in the ground, with brass cap mkd.



From which:

The remains of the original bearing trees:

A stump, 24 ins. diam., bears N7°W, 25 lks. dist., visible marks T3 R3 S.  
(Record: N9 1/4° E, 25 lks.)

A stump, 22 ins. diam., bears S53°E, 82 lks. dist., visible marks BT (Record: S60°E, 82 lks.).

The new bearing trees:

A pine, 7 ins. diam., bears S6 3/4°E, 50 lks. dist., mkd. T31N R31W S21 BT.

A pine, 7 ins. diam., bears S40 1/4°W, 83 lks. dist., mkd. T31W R31W S20 BT.

1986 Certified Corner Recordation by Thomas C. Hill, Reg. #5612-S: Set guard post and general maintenance.

II. Pound a 2 1/2 ins. diam. iron pipe, 6 ins. out of ground, with a 3 1/4 ins. diam. B.L.M. brass cap, marked as shown above, from which:

A dead pine, 10 ins. diam., bears S7°E, 33 ft. (50 lks.) dist., healed face.

A dead pine, 10 ins. diam., bears S40°W, 54.8 ft. (83 lks.) dist., mkd. T31W R31W S20 BT.

A fir, 6 ins. diam., bears S14°W, 14.1 ft. (21 lks.) dist., mkd. T31N R31W S20 BT.

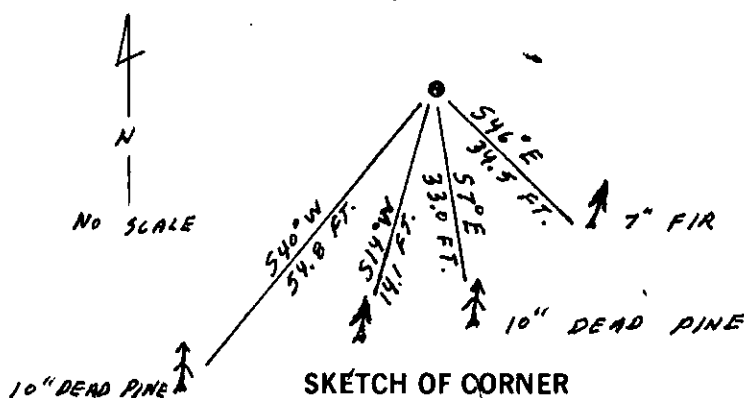
(Unknown record)

A 6 ft. galvanized steel guard post with Land Survey Marker decal, East, 2 ft.

III. Established one new bearing tree:

A fir, 7 ins. diam., bears S46°E, 34.5 ft. dist., mkd. T31N R31W S21 BT.

Painted red bands around the bearing trees and attached Land Survey Monument and Bearing Tree signs.  
Magnetic Declination: 20° East



SKETCH OF CORNER

CERTIFICATION

1. Raymond A. Pederson  
certify the information shown herein is true and correct.

Signature Ground Party: \_\_\_\_\_

1. Ronald A. Pearson  
certify that this Corner Record correctly represents work performed by me or under my direction in compliance with the "Corner Recordation Act" (70-22-101, et seq., M.C.A.)

Signature of Surveyor & Seal: \_\_\_\_\_

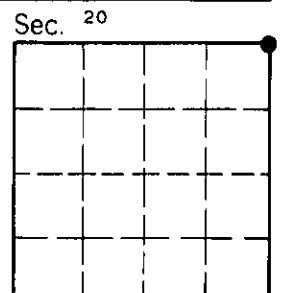
Date: 11/23/92 Reg. No. 9008LS

Employer: U.S. FOREST SERVICE

Office of Clerk and Recorder, County of Lincoln. This "corner record" was filed for record on 1-4-93 was noted on the cross-index plat and is assigned page No. 5234, in book No. \_\_\_\_\_

Coral M. Cummings  
County Official

N-9 31 N 31 W  
Cross Index No. \_\_\_\_\_ T. \_\_\_\_\_ R. \_\_\_\_\_ P.M.M.



• - corner this sheet