

INSTRUCTIONS

1. Original and/or subsequent record used to evaluate the corner position.
2. Description of evidence found, note discrepancies in the record, state method of establishing lost or obliterated corners.
3. Description of monument and accessories set to perpetuate the corner position.
4. Sketch of corner, show all pertinent data which can best be shown in a sketch example, corner marking, topography ties, position of accessories, etc.
5. Certification must be signed and sealed by Land Surveyor registered in the State of Montana.
6. Fill in Cross Index & Section Diagram at bottom of sheet.

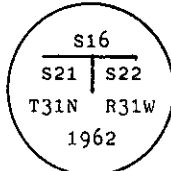
CERTIFIED CORNER RECORDATION

Corner of Secs. 21 and 22 only T. 31 N., R. 31 W., P.M.M. Lincoln County

I. 1893 G.L.O. record by Danial P. Mumbrue: Set a wood post for corner of secs. 15, 16, 21 & 22, marked four bearing trees.

1901 G.L.O. retracement record by Abram E. Jaqueth: Effaces marks on wood post and bearing trees to refer to secs. 21 and 22 only.

1962 B.L.M. remonumentation record by Gerald F. Pittman et al: "The cor. of secs. 21 and 22, as determined from the remains of the original bearing trees. At corner point; set an iron post, 30 ins. long, 2 1/2 ins. diam., 26 ins. in the ground, with brass cap mkd.



From which:

The remains of the original bearing trees:

- A stump, 18 ins. diam., bears N16 3/4° E, 70 lks. dist., visible marks T31N R31W S15 (record).
- A decayed stump, bears S12° W, 29 lks. dist., no visible marks (Record: S17° W, 29 lks.).

The new bearing trees:

- A pine, 10 ins. diam., bears S78° E., 24 lks. dist., mkd. T31N R31W S22 BT.
- A pine, 6 ins. diam., bears S60° W, 47 lks. dist., mkd. X S21 BT S20 BT.

Raise a flat mound of stone, 3 ft. diam., around the iron post.

II. Found a 2 1/2 ins. diam. iron pipe, 3 ins. out of mound of stone 3 ft. diam. by 2 ft. high with a 3 1/4 ins. diam. B.L.M. brass cap, marked as shown above, from which

- A fallen pine, 11 ins. diam., bears S80° E., 15.0 ft. (23 lks. dist.), mkd. T31N R31W S22 BT.
- A pine stump, 9 ins. diam., bears S60° W, 31.0 ft. (47 lks.) dist., mkd. BT.
- A decayed stump, bears N17° E, 46.0 ft. (70 lks.) dist., no visible marks.

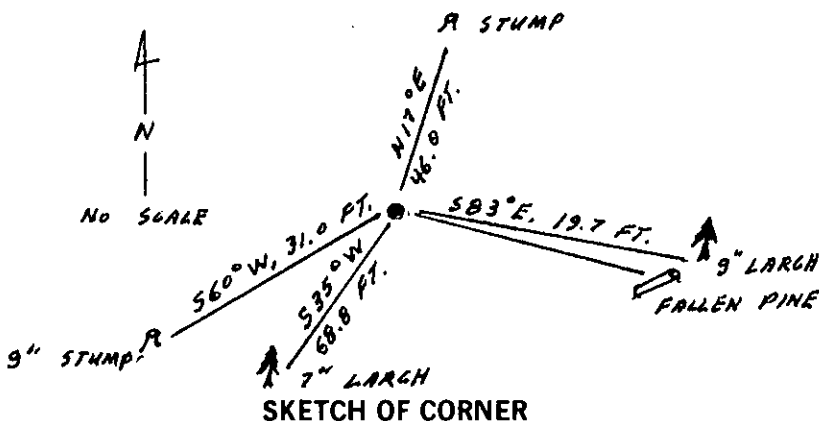
III. Established two new bearing trees:

- A larch, 9 ins. diam., bears S83° E, 19.7 ft. dist., mkd. T31N R31W S22 BT.
- A larch, 7 ins. diam., bears S35° W, 68.8 ft. dist., mkd. T31N R31W S21 BT.

Painted red bands around the bearing trees and attached Land Survey Monument and Bearing Tree signs.

Set a 6 ft. galvanized steel guard post with Land Survey Marker & Property Boundary decals, West, 3 ft.

Magnetic Declination: 20° East



CERTIFICATION

I, Raymond A. Pederson, certify the information shown herein is true and correct.

Signature Ground Party Check

I, Ronald A. Pearson, certify that this Corner Record correctly represents work performed by me or under my direction in compliance with the "Corner Recordation Act" (70-22-101, et seq., M.C.A.)

Signature of Surveyor & Seal

Date: 11/23/92 Reg. No. 9008LS

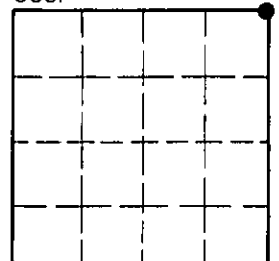
Employer: U.S. FOREST SERVICE

Office of Clerk and Recorder, County of Lincoln. This "corner record" was filed for record on 1-4-93 was noted on the cross-index plat and is assigned page No. 5233, in book No. Coral M. Cummings by RLS

County Official

N-13 31 N 31 W
Cross Index No. T. R. PMM

Sec. 21



• - corner this sheet