

INSTRUCTIONS

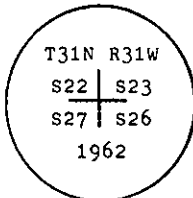
1. Original and/or subsequent record used to evaluate the corner position.
2. Description of evidence found, note discrepancies in the record, state method of establishing lost or obliterated corners.
3. Description of monument and accessories set to perpetuate the corner position.
4. Sketch of corner, show all pertinent data which can best be shown in a sketch example, corner marking, topography ties, position of accessories, etc.
5. Certification must be signed and sealed by Land Surveyor registered in the State of Montana.
6. Fill in Cross Index & Section Diagram at bottom of sheet.

CERTIFIED CORNER RECORDATION

Corner of Secs. 22, 23, 26 & 27 T. 31 N., R. 31 W., P.M.M. Lincoln County

I. 1893 G.L.O. record by Danial P. Mumbrue: Set a wood post and marked four bearing trees.

1962 B.L.M. remonumentation record by Gerald F. Pittman et al: "The cor. of secs. 22, 23, 26 and 27, monumented with a wooden post, 2 ft. long, 4 ins. sq., firmly set and mkd. as described in the official record, and witnessed by the remains of the original bearing trees. At corner point; set an iron post, 30 ins. long, 2 1/2 ins. diam., 26 ins. in the ground, with brass cap mkd.



From which:

The remains of the original bearing trees:

- A decayed stump, bears N50° E, 87 lks. dist., no marks visible. (Record: N52° E, 87 lks.)
- A stump, 18 ins. diam., bears S74° E, 94 lks. dist., mkd. T31N R31W S26 BT.
(Record: S 71 3/4° E, 94 lks.)
- A stump, 20 ins. diam., bears S35° W, 45 lks. dist., visible marks R31W S27 BT.
(Record: S32 3/4° W, 45 lks.)
- A decayed stump, bears N53 1/2° W, 22 lks. dist., no marks visible. (Record)

The new bearing trees:

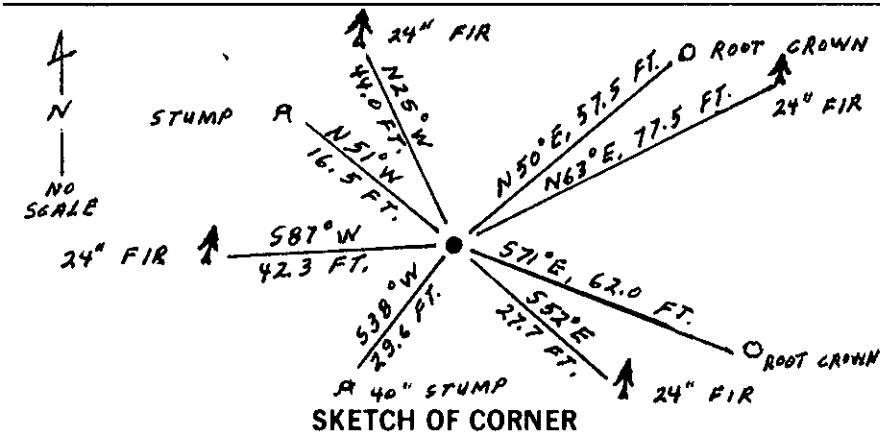
- A fir, 18 ins. diam., bear, N62° E, 117 lks. dist., mkd. T31N R31W S23 BT.
- A fir, 16 ins. diam., bears S53° E, 41 lks. dist., mkd. T31N R31W S26 BT.
- A fir, 16 ins. diam., bears S83° W, 64 lks. dist., mkd. T31N R31W S27 BT.
- A fir, 18 ins. diam., bears N29 1/2° W, 66 lks. dist., mkd. T31N R31W S22 BT.

Bury the original wooden post, inverted, alongside, and raise a flat mound of stone, 3 ft. diam., around the iron post."

II. Found a 2 1/2 ins. diam. iron pipe, 3 ins. out of ground in flat mound of stone with 3 1/4 ins. diam. B.L.M. brass cap, marked as shown above, from which

- A root crown, bears N50° E, 57.5 ft. (87 lks.) dist
- A root crown, bears S71° E, 62.0 ft. (94 lks.) dist.
- A stump, 40 ins. diam., bears S38° W, 29.6 ft. (45 lks.) dist., visible scribe.
- A decayed stump, bears N51° W, 16.5 ft. (25 lks.) dist. (Record: 22 lks.)
- A fir, 24 ins. diam., bears N63° E, 77.5 ft. (117 lks.) dist., healed face.
- A fir, 24 ins. diam., bears S52° E, 27.7 ft. (42 lks.) dist., healed face.
- A fir, 24 ins. diam., bears S87° W, 42.3 ft. (64 lks.) dist., healed face.
- A fir, 24 ins. diam., bears N25° W, 44.0 ft. (67 lks.) dist., healed face.

III. Painted red bands around the bearing trees and attached Land Survey Monument and Bearing Tree signs. Set a 6 ft. galvanized steel guard post with Land Survey Marker and Property Boundary decals, East, 3 ft.
Magnetic Declination: 20° East



CERTIFICATION

1. Raymond A. Pederson 9008LS
certify the information shown herein is true and correct.

Signature Ground Party Chief

1. Ronald A. Pearson
certify that this Corner Record correctly represents work performed by me or under my direction in compliance with the "Corner Recordation Act" (70-22-101, et seq., M.C.A.)

Signature of Surveyor & Seal

Date: 12/1/92 Reg. No. 9008LS

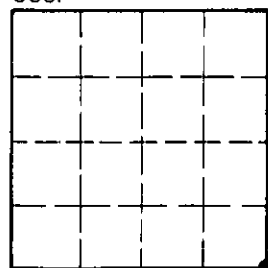
Employer: U.S. FOREST SERVICE

Office of Clerk and Recorder, County of Lincoln. This "corner record" was filed for record on 1-4-93 was noted on the cross-index plat and is assigned page No. 5232, in book No. Corral M. Cummings by PRR

County Official

R-17 31 N 31 W
Cross Index No. T. R. PMM

Sec. 22



• - corner this sheet