

INSTRUCTIONS

1. Original and/or subsequent record used to evaluate the corner position.
2. Description of evidence found, note discrepancies in the record, state method of establishing lost or obliterated corners.
3. Description of monument and accessories set to perpetuate the corner position.
4. Sketch of corner, show all pertinent data which can best be shown in a sketch example, corner marking, topography ties, position of accessories, etc.
5. Certification must be signed and sealed by Land Surveyor registered in the State of Montana.
6. Fill in Cross Index & Section Diagram at bottom of sheet.

CERTIFIED CORNER RECORDATION

Corner 1/4 Cor. of Secs. 26 and 27 T. 31 N. R. 31 W. P.M.M. Lincoln County

- I. 1893 G.L.O. record by Danial P. Mumbrue: Set a wood post 3 ft. long, 3 ins. square 24 ins. in the ground for 1/4 sec. cor. marked 1/4 S on W. face; from which

A pine, 18 ins. diam., bears S21° E, 46 lks. dist., mkd. 1/4 S BT.

A pine, 20 ins. diam., bears N62 1/4° W, 108 lks. dist., mkd. 1/4 S BT.

1964 Certified Land Corner Recordation by Jack W. Ninneman, Reg. #534ES: "Post long since destroyed.

No real evidence found for SE witness tree but this was at one time a clearing. At approximate position reported for NW witness tree found stump approx. right size but cut below blaze height believed this to be old witness tree but to establish new 1/4 corner we ran transit line from SW cor. Sec. 26 to NW Cor. Sec. 26 and established corner on true line between said corners. Since this adjusted line positively confirmed the 28" stump found as the original witness tree we allowed this evidence to influence our placing the new corner ON LINE at 2646.5 from south corner and 2632.2 from north corner. This places the new corner within inches of original location whereas, to place the corner strictly in accord with proportionate distances would have meant ignoring evidence of original location.

Set a 1" steel rod 18" long 15" in the ground at the established position for the corner from which a 12" pine, bears N84° W, 26 ft., marked S27 1/4 BT and a 9" pine, bears S49° 30' E, 19 ft., marked S26 1/4 BT."

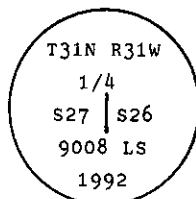
- II. Found a 1 in. diam. iron pin, firmly set 2 ins. above ground; from which

A pine, 14 ins. diam., bears S50° E, 18.6 ft., healed face. (Ninneman record)

A pine, 16 ins. diam., bears N86° W, 26.0 ft. dist., mkd. S 1/4 BT. (Ninneman record)

A pine stump, 20 ins. diam., bears N62° W, 70.6 ft. (107 lks.) dist., visible hack marks. (G.L.O.)

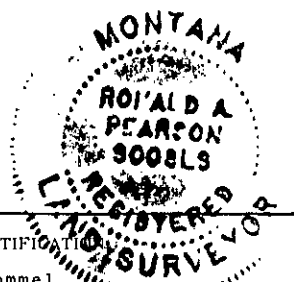
- III. Replaced iron pin with an aluminum pipe, 2 1/2 ins. diam., 2 ins. out of the ground with a 3 1/4 ins. diam. B.L.M alum. cap mkd. as shown:



Painted red bands around the bearing trees and attached Land Survey Monument and Bearing Tree signs.

Set a 6 ft. galvanized steel guard post with Land Survey Marker and Property Boundary decals, South, 3 ft.

Magnetic Declination: 20° East



CERTIFICATION

I, Thomas M. Hommel
certify the information shown herein is true and correct.

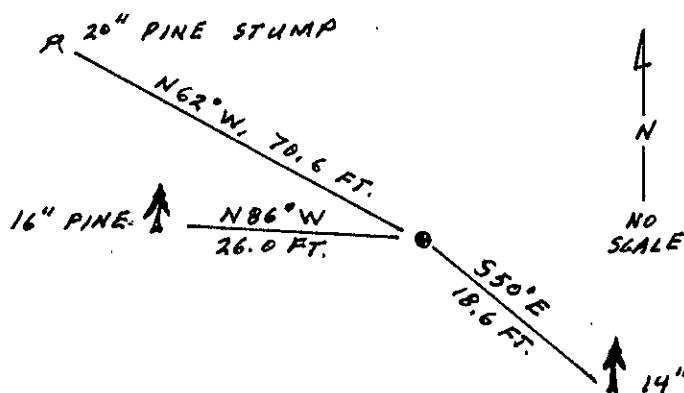
Thomas M. Hommel
Signature Ground Party Chief

I, Ronald A. Pearson
certify that this Corner Record correctly represents work performed by me or under my direction in compliance with the "Corner Recordation Act" (70-22-101, et seq., M.C.A.)

Ronald A. Pearson
Signature of Surveyor & Seal

Date: 9/1/92 Reg. No. 9008 LS

Employer: U.S. FOREST SERVICE



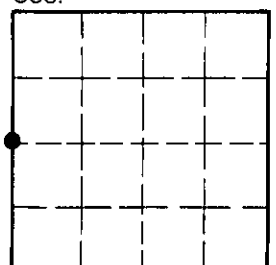
SKETCH OF CORNER

Office of Clerk and Recorder, County of Lincoln. This "corner record" was filed for record on 1-4-93 was noted on the cross-index plat and is assigned page No. 5229, in book No. Coral M Cummings by JES

County Official

T-17 31 N 31 W
Cross Index No. T. R. PMM

Sec. 26



• - corner this sheet