

CERTIFIED LAND CORNER RECORDATION

DESCRIPTION OF CORNER EVIDENCE FOUND, AND ORIGINAL RECORD (IF KNOWN)

EVIDENCE ON THE GROUND:

BURNED STUMP WHICH BEARS S42-29-22 E 17.82 FEET OR 27 LINKS. FOUND ROCK PILE IN FENCE LINE. FENCE CORNER DESCRIBED IN G.L.O. NOTES 22 LINKS NORTH OF CORNER. FOUND FENCE 14.52' N OF ROCK PILE.

ORIGINAL RECORD:

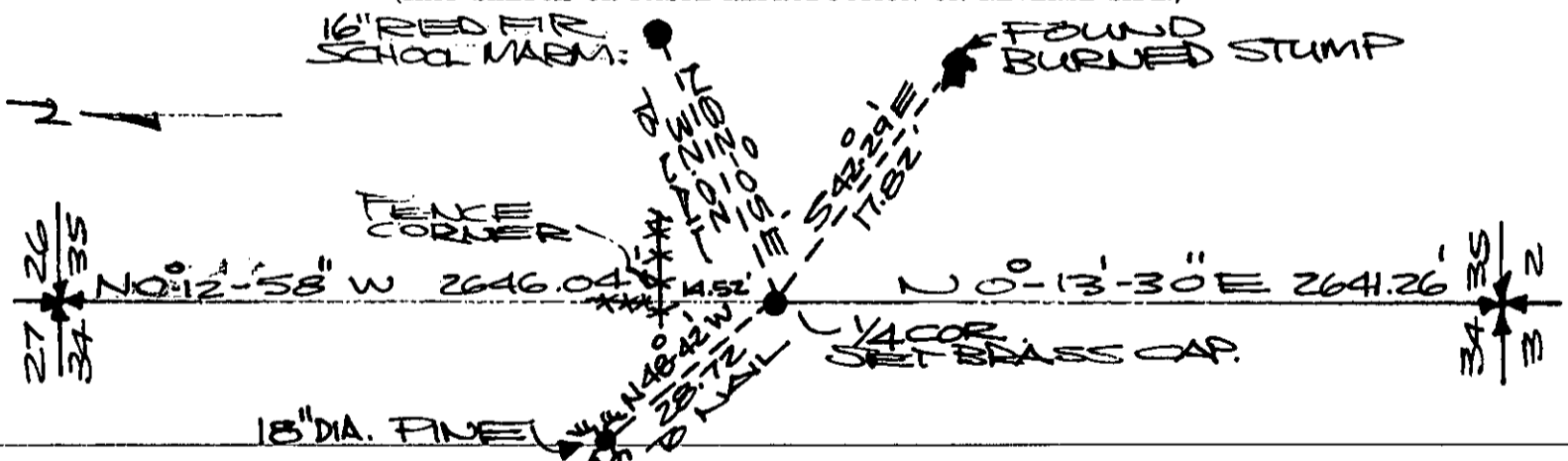
IN 1893 SET A WOOD POST FROM WHICH A 26" PINE BEARS S36-15E 27 LINKS AND A 24" PINE BEARS N77-45'W 63 LINKS. A FENCE CORNER IS .22 CH. NORTH OF CORNER.

DESCRIPTION OF MONUMENT AND ACCESSORIES ESTABLISHED TO PERPETUATE THE ORIGINAL LOCATION OF THIS CORNER:

Date of work: 6-15-77

I SET A 1/2 INCH PIPE W/ 2 INCH BRASS CAP IN THE MIDST OF A PILE OF ROCKS WHICH FITS WELL THE ORIGINAL RECORD. I MAKE TWO REFERENCE MONUMENTS AS SHOWN ON THE SKETCH BELOW.

SKETCH, WITH COURSE AND DISTANCE TO ADJACENT CORNERS IF DETERMINED IN THIS SURVEY. (MAY SKETCH OR PASTE REPRODUCTION ON REVERSE SIDE.)

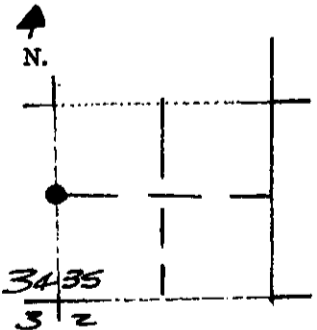


I, MELVIN D. LAUTEREN certify that the information shown herein is true and correct. Signature of Ground Party Chief

I, MELVIN D. LAUTEREN certify that I have carefully performed or reviewed the work done on the diagrammed corner as reported on this recordation form and approve the same. Signature of Surveyor

4232-5 Registration Number

DIAGRAM OF CORNER:



• = Corner recorded on the sheet W/4 CORNER, SECTION 35 T30N, R31W, P.M.M.

Office of Clerk and Recorder, County of Lincoln This "corner record" was filed for record on the 15th day of July 1977, was noted on the cross-index plat and is assigned page No. 501, in book No. 1

Released L. Vaupen by Verdel J. Higgins County Official Deputy