

# CERTIFIED LAND CORNER RECORDATION

## DESCRIPTION OF CORNER EVIDENCE FOUND, AND ORIGINAL RECORD (IF KNOWN)

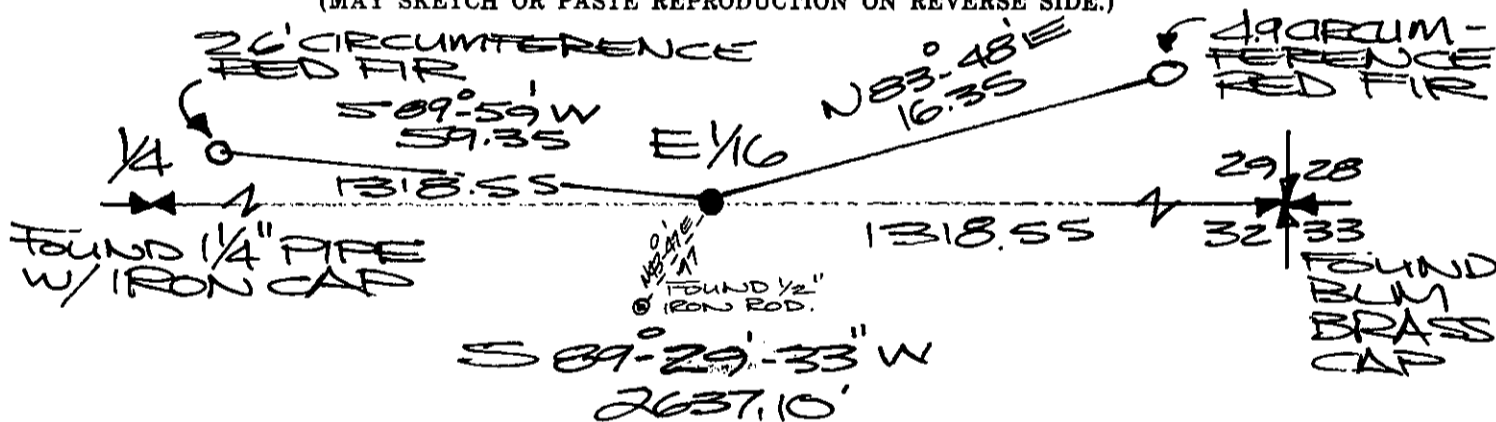
I FOUND A 1/2" IRON ROD THAT WAS PROBABLY SET FOR THE SW. CORNER OF LOT 4, OF RAWLINGS ROAD SUBDIVISION. THERE IS NO CORNER RECORD IN LINCOLN COUNTY RECORDS.

## DESCRIPTION OF MONUMENT AND ACCESSORIES ESTABLISHED TO PERPETUATE THE ORIGINAL LOCATION OF THIS CORNER:

Date of work: MAY, 1977

1 SET A 1 1/2 INCH PIPE WITH PLASTIC CAP MARKED MIDL. 4232-S AND MAKE 2 REFERENCE MONUMENTS AS SHOWN IN SKETCH BELOW.

## SKETCH, WITH COURSE AND DISTANCE TO ADJACENT CORNERS IF DETERMINED IN THIS SURVEY. (MAY SKETCH OR PASTE REPRODUCTION ON REVERSE SIDE.)



Surveyor's Seal



I, KEN DAVIS  
certify that the information shown herein is true and correct.

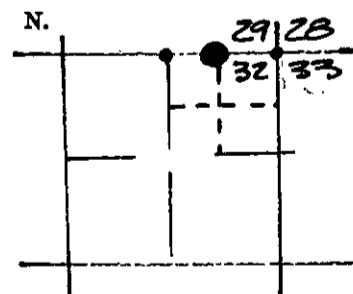
*Ken Davis*  
Signature of Ground Party Chief

I, MELVIN D. LAUTEREN  
certify that I have carefully performed or reviewed the work done on the diagrammed corner as reported on this recordation form and approve the same.

*Melvin D. Lauteren*  
Signature of Surveyor

4232-S  
Registration Number

## DIAGRAM OF CORNER:



● = Corner recorded on the sheet  
E 1/6 COR.  
S 32.529  
T 31 N, R 31 W  
PM, M.

Office of Clerk and Recorder, County of Lincoln

This "corner record" was filed for record on the 6<sup>th</sup> day of June, 1977, was noted on the cross-index plat and is assigned page No. 493, in book No. 1

*Charles L. Taylor*  
County Official

*Betty Stender*  
Deputy