

# CERTIFIED LAND CORNER RECORDATION

## DESCRIPTION OF CORNER EVIDENCE FOUND, AND ORIGINAL RECORD (IF KNOWN)

NO EVIDENCE ON THE GROUND.

TESTIMONY OF A.J. BITTERMAN A RESIDENT NEAR THE MEANDER CORNER FOR 45 YEARS WAS TAKEN AND HE SHOWED WHERE THE M.C. SHOULD BE.

### ORIGINAL RECORD:

SET A POST AT 72.77 CH. (RT. BANK OF RIVER)  
A 30" PINE - N65°E 71 LKS.  
A 12" COTTONWOOD - N32°-30'W 108 LKS.

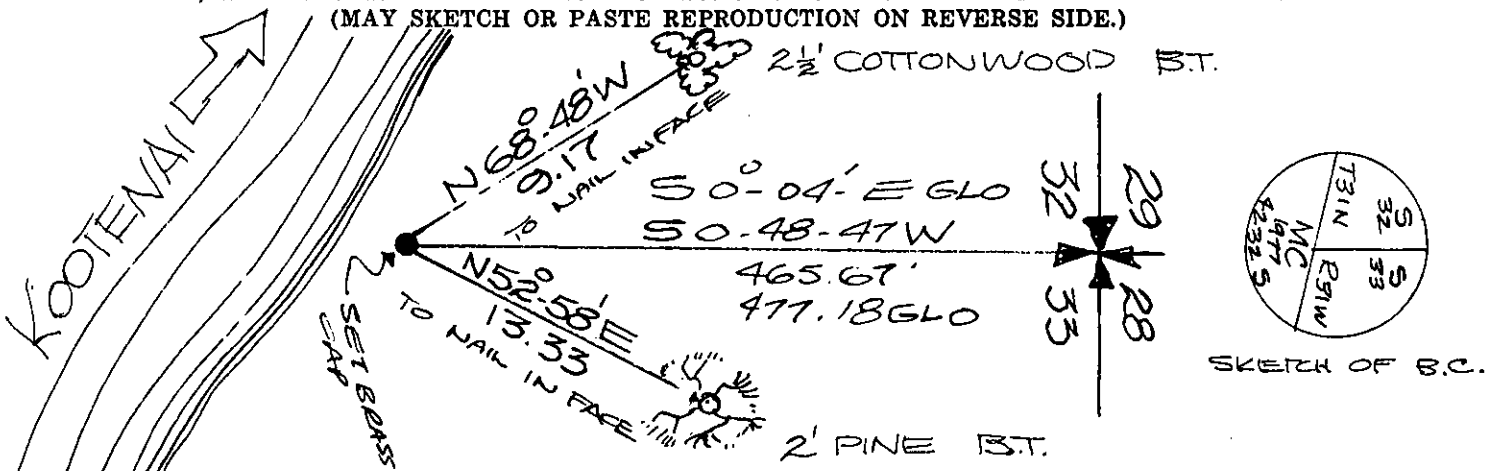
## DESCRIPTION OF MONUMENT AND ACCESSORIES ESTABLISHED TO PERPETUATE THE ORIGINAL LOCATION OF THIS CORNER:

Date of work: MAY, 1977

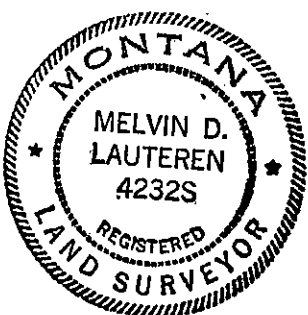
I SET A BRASS CAP ON A 1/2" PIPE AT THE POINT SHOWN US BY MR BITTERMAN. I MAKE (2) TWO R.M.'S AS SHOWN ON THE SKETCH BELOW.

NOTE: A UNRECORDED PLAT BY IRA MILLER IN 1943 SHOWED THE DISTANCE FROM THE SECTION CORNER TO MEANDER CORNER TO BE 470 FEET.

## SKETCH, WITH COURSE AND DISTANCE TO ADJACENT CORNERS IF DETERMINED IN THIS SURVEY. (MAY SKETCH OR PASTE REPRODUCTION ON REVERSE SIDE.)



Surveyor's Seal



I, KEN DAVIS  
certify that the information shown herein is true and correct.

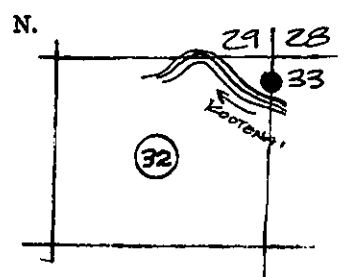
Ken Davis  
Signature of Ground Party Chief

I, MELVIN D. LAUTEREN  
certify that I have carefully performed or reviewed the work done on the diagrammed corner as reported on this recordation form and approve the same.

Melvin D. Lauteren  
Signature of Surveyor

4232-S  
Registration Number

## DIAGRAM OF CORNER:



● = Corner recorded on the sheet  
THE MEANDER CORNER ON RIGHT BANK OF KOOTENAI RIVER S32, S33, T31N, R31W, P.M.M.

Office of Clerk and Recorder, County of Lincoln

This "corner record" was filed for record on the 10 day of June, 1977, was noted on the cross-index plat and is assigned page No. 492, in book No. 1

Elmer L. Laughlin County Official  
Betty H. Huelsh Deputy