

## INSTRUCTIONS

1. Original and/or subsequent record used to evaluate the corner position.
2. Description of evidence found, note discrepancies in the record, state method of establishing lost or obliterated corners.
3. Description of monument and accessories set to perpetuate the corner position.
4. Sketch of corner, show all pertinent data which can best be shown in a sketch example, corner marking, topography ties, position of accessories, etc.
5. Certification must be signed and sealed by Land Surveyor registered in the State of Montana.
6. Fill in Cross Index & Section Diagram at bottom of sheet.

## CERTIFIED CORNER RECORDATION

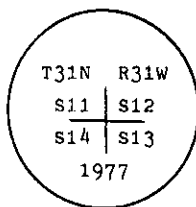
Corner of secs. 11, 12, 14, and 13 T. 31 N., R. 31 W., P.M.M., Lincoln County

- I. 1901 G.L.O. record by A. Jaqueth: Set a stone and four bearing trees for the cor. of Secs. 11, 12, 13 and 14.

1977 BLM remonumentation by Larry A. Christiansen: "The cor. of secs. 11, 12, 13 and 14, monumented with a limestone, 16x10x9 ins., firmly set 11 ins. in the ground, mkd. with 4 notches on the S. and 1 notch on the E. edges, and witnessed by the remains of the original bearing trees.

A larch, 24 ins. diam., bears N27° E, 63 lks. dist., with an overgrown blaze.  
 A fir, 30 ins. diam., bears S45° E, 42 lks. dist., with an overgrown blaze.  
 A fir, 18 ins. diam., bears S49° W, 9 lks. dist., with an overgrown blaze.  
 A dying larch, 24 ins. diam., bears N58° 35' W, 73 lks. dist., mkd. T31N R31W S11 BT.

At the corner point, set an iron post, 30 ins. long, 2 1/2 ins. diam., 22 ins. in the ground, with brass cap mkd.



from which a new bearing tree:

A fir, 11 ins. diam., bears N37° W, 51 lks. dist., mkd. T31N R31W S11 BT.

Bury the original stone alongside the iron post."

- II. Found a 2 1/2 ins. diam. pipe, 6 ins. out of the ground, with BLM brass cap mkd. as shown, from which

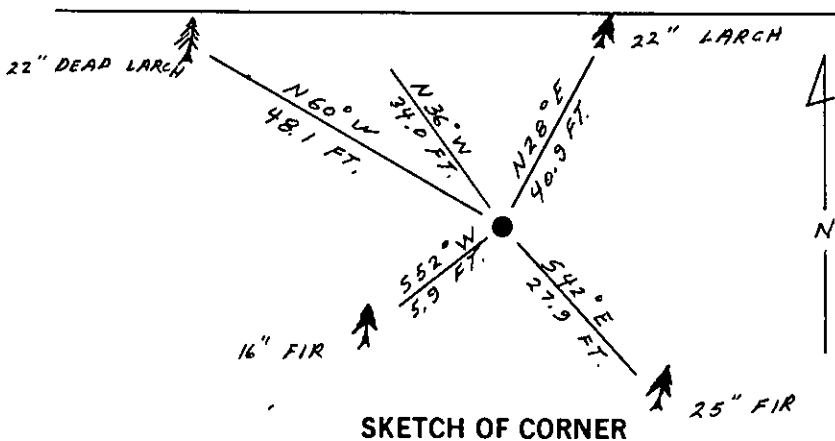
A larch, 22 ins. diam., bears N28° E, 40.9 ft. (62 lks.) dist., no visible scribing.  
 A douglas fir, 25 ins. diam., bears S42° E, 27.9 ft. (42.3 lks.) dist., no visible scribing.  
 A douglas fir, 16 ins. diam., bears S52° W, 5.9 ft. (9 lks.) dist., visible scribing.  
 A dead larch, 22 ins. diam., bears N60° W, 48.1 ft. (73 lks.) dist., visible scribing.  
 A spruce, 11 ins. diam., bears N36° W, 34.0 ft. (52 lks.) dist., visible scribing.

- III. Painted red bands around the bearing trees and attached Land Survey Monument and Bearing Tree signs.

Set a 6 ft. galvanized steel guard post with Land Survey Marker and Property Boundary decals.

East, 2 ft.

Magnetic Declination: 20° East



SKETCH OF CORNER

## CERTIFICATION

I, Kevin A. Todd  
 certify the information shown herein is true and correct.

*Kevin A. Todd*  
 Signature Ground Party Chief

I, Ronald A. Pearson  
 certify that this Corner Record correctly represents work performed by me or under my direction in compliance with the "Corner Recordation Act" (70-22-101, et seq., M.C.A.)

*Ronald A. Pearson*  
 Signature of Surveyor & Seal

Date: 8/6/91 Reg. No. 9008 LS

Employer: U.S. FOREST SERVICE

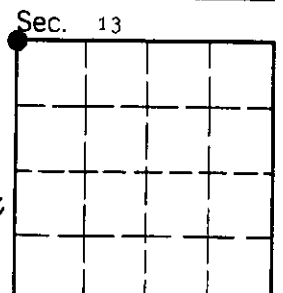
Office of Clerk and Recorder, County of Lincoln This "corner

record" was filed for record on Aug 13, 1991

was noted on the cross-index plat and is assigned page No. 4566, in

book No. \_\_\_\_\_

*Carol M. Cummings by Bill Buckley*  
 County Official



Cross Index No. J-21 T. 31 N. R. 31 W. PMM

• - corner this sheet