

INSTRUCTIONS

1. Original and/or subsequent record used to evaluate the corner position.
2. Description of evidence found, note discrepancies in the record, state method of establishing lost or obliterated corners.
3. Description of monument and accessories set to perpetuate the corner position.
4. Sketch of corner, show all pertinent data which can best be shown in a sketch example, corner marking, topography ties, position of accessories, etc.
5. Certification must be signed and sealed by Land Surveyor registered in the State of Montana.
6. Fill in Cross Index & Section Diagram at bottom of sheet.

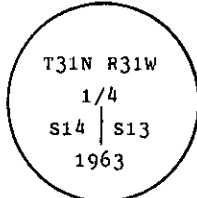
CERTIFIED CORNER RECORDATION

Corner 1/4 of Secs. 13 and 14 T. 31 N. R. 31 W. P.M.M. Lincoln County

I. 1901 G.L.O. original record by Abram L. Jaqueth: Set a stone with two bearing trees.

1963 BLM remonumentation by Gerald F. Pittman et al: "The 1/4 sec. cor. of secs. 13 and 14, monumented with a argillite stone, 14x10x6 ins., firmly set and mkd. 1/4 on the W. face, and witnessed by the original bearing trees.

At the corner point, set an iron post, 30 ins. long, 2 1/2 ins. diam., 26 ins. in the ground, with brass cap mkd.



from which, the original bearing trees:

A pine, 29 ins. diam., bears S26 1/4° E, 90 lks. dist., visible marks S1.
(Record: N81 1/2° E, 69 lks.)

A pine, 22 ins. diam., bears N25 1/2° W, 114 lks. dist., mkd. 1/4 S14 BT.
(Record: S18 1/4° W, 33 lks.)

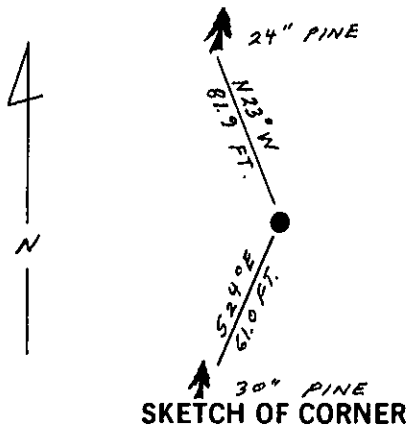
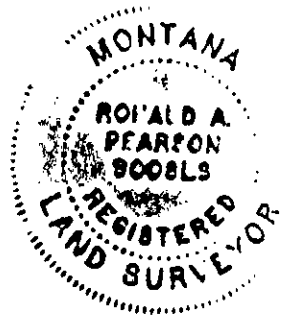
Bury the original stone alongside of the iron post."

II. Found a 2 1/2 ins. diam. pipe, 4 ins. out of the ground, with BLM brass cap mkd. as shown, set stone 14x11x6 ins., mkd. 1/4 next to iron pipe, from which

A ponderosa pine, 30 ins. diam., bears S24° E, 61.0 ft. (92 lks.) dist., visible scribing.
(Record: tamarack, N81 30'E, 69 lks.)

A ponderosa pine, 24 ins. diam., bears N23° W, 81.9 ft. (124 lks.) dist., visible scribing.
(G.L.O. record: tamarack, S18 1/4° W, 33 lks.) (B.L.M. record: N25 1/2° W, 114 lks.)

III. Painted red bands around the bearing trees and attached Land Survey Monument and Bearing Tree signs.
Set a 6 ft. galvanized steel guard post with Land Survey Marker and Property Boundary decals, south, 3 ft.
Magnetic Declination: 20° East



CERTIFICATION

I, Kevin A. Todd
certify the information shown herein is true and correct.

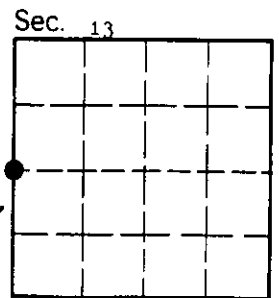
Kevin A. Todd
Signature Ground Party Chief

I, Ronald A. Pearson
certify that this Corner Record correctly represents work performed by me or under my direction in compliance with the "Corner Recordation Act" (70-22-101, et seq., M.C.A.)

Ronald A. Pearson
Signature of Surveyor & Seal

Date: 8/5/91 Reg. No. 9008 LS
Employer: U.S. FOREST SERVICE

Office of Clerk and Recorder, County of Lincoln. This "corner record" was filed for record on Aug 13, 1991 was noted on the cross-index plat and is assigned page No. 4562, in book No. _____ Coral M Cummings by Eric Beckhoff County Official



Cross Index No. L-21 T. 31 N R. 31 W P.M.M.