

INSTRUCTIONS

1. Original and/or subsequent record used to evaluate the corner position.
2. Description of evidence found, note discrepancies in the record, state method of establishing lost or obliterated corners.
3. Description of monument and accessories set to perpetuate the corner position.
4. Sketch of corner, show all pertinent data which can best be shown in a sketch example, corner marking, topography lies, position of accessories, etc.
5. Certification must be signed and sealed by Land Surveyor registered in the State of Montana.
6. Fill in Cross Index & Section Diagram at bottom of sheet.

CERTIFIED CORNER RECORDATION

Corner E 1/4 of Sec. 13 only T. 31 N. R. 31 W. P.M.M. Lincoln County

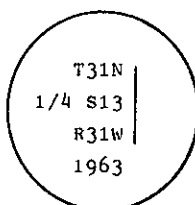
- I. 1898 G.L.O. original record by Paul S.A. Bickel: Set a stone and two bearing trees for 1/4 cor. common to Sec. 18 T31N R30W and Sec. 13 T31N R31W.

1901 G.L.O. re-establishment record by Abram L. Jaqueth: Destroy old cor. and establish a stone with two bearing trees for the 1/4 cor. of Sec. 13 only.

1904 G.L.O. retracement record by George A. Fessenden and Ranney Y. Lyman: Notes and accepts a stone described by the surveyor general.

1963 BLM remonumentation by Gerald F. Pittman et al: "The 1/4 sec. cor. of sec.13, on the E. bdy. of the Tp., monumented with a limestone, 14x14x6 ins., firmly set and mkd. 1/4 on the W. face, and witnessed by the remains of the original bearing trees.

At the corner point, set an iron post, 30 ins. long, 2 1/2 ins. diam., 26 ins. in the ground, with brass cap mkd.



from which the remains of the original bearing trees:

A stump, 16 ins. diam., bears S67 1/2° W, 12 lks. dist., with illegible scribing.
(Record: S79° 48' W, 12 lks.)

A fir, 13 ins. diam., bears N16° W, 40 lks. dist., mkd. with an overgrown blaze. (record)

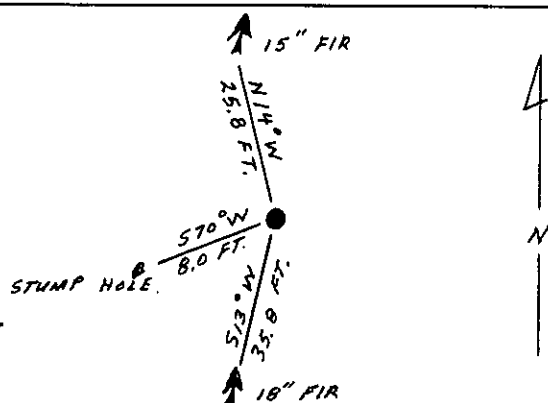
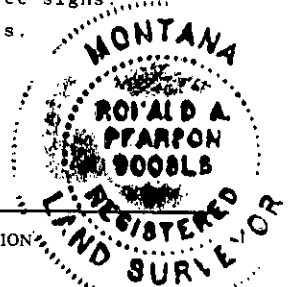
The new bearing tree:

A fir, 13 ins. diam., bears S10 1/2° W, 54 lks. dist., mkd. 1/4 S13 BT.

Bury the original stone alongside of the iron post."

- II. Found a 2 1/2 ins. diam. pipe, 6 ins. out of the ground, with BLM brass cap mkd. as shown, from which
A douglas fir, 18 ins. diam., bears S13° W, 35.8 ft. (54 lks.) dist., no visible scribing.
A stump hole, bears S70° W, 8.0 ft. (12 lks.) dist.
A douglas fir, 15 ins. diam., bears N14° W, 25.8 ft. (39 lks.) dist., no visible scribing.

- III. Painted red bands around the bearing trees and attached Land Survey Monument and Bearing Tree signs.
Set a 6 ft. galvanized steel guard post with Land Survey Marker and Property Boundary decals.
South, 3 ft.
Magnetic Declination: 20° East



SKETCH OF CORNER

CERTIFICATION

I, Kevin A. Todd
certify the information shown herein is true and correct.

Kevin A. Todd
Signature Ground Party Chief

I, Ronald A. Pearson
certify that this Corner Record correctly represents work performed by me or under my direction in compliance with the "Corner Recordation Act" (70-22-161 et seq., M.C.A.)

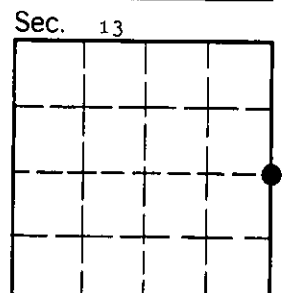
Ronald A. Pearson
Signature of Surveyor & Seal

Date: 8/5/91 Reg. No. 9008 LS

Employer: U.S. FOREST SERVICE

Office of Clerk and Recorder, County of Lincoln. This "corner record" was filed for record on Aug 13, 1991 was noted on the cross-index plat and is assigned page No. 4561, in book No. Coral Monuments by Bill Buckoff

County Official



Cross Index No. L-25 T. 31 N R. 31 W P.M.M.

• - corner this sheet