

INSTRUCTIONS

1. Original and/or subsequent record used to evaluate the corner position.
2. Description of evidence found, note discrepancies in the record, state method of establishing lost or obliterated corners.
3. Description of monument and accessories set to perpetuate the corner position.
4. Sketch of corner, show all pertinent data which can best be shown in a sketch example, corner marking, topography ties, position of accessories, etc.
5. Certification must be signed and sealed by Land Surveyor registered in the State of Montana.
6. Fill in Cross Index & Section Diagram at bottom of sheet.

CERTIFIED CORNER RECORDATION

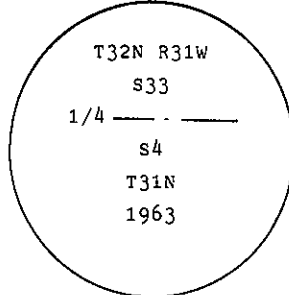
Corner 1/4 Cor. of Sec. 4 and Sec. 33 T. 31 N., 32 N. R. 31 W., 31 W. P.M.M. Lincoln County

- I. 1901, G.L.O. original record by Abram L. Jaqueth: Set a stone monument, marked a pine and fir as bearing trees.

1963, B.L.M. remonumentation record by Gerald F. Pittman et al: "The 1/4 sec. cor. of secs. 4 and 33, on the S. bdy. of the Tp., monumented with an unmarked limestone, 10x10x4 ins., firmly set and witnessed by the remains of the original bearing trees.

At the corner point;

Set an iron post, 30 ins. long, 2 1/2 ins. diam., 26 ins. in the ground, with brass cap mkd.



from which

The remains of the original bearing trees:

- A stump, 16 ins. diam., bears S5°E, 9 lks. dist., visible marks 1/4 S4. (Record: South, 9 lks.)
A stump, 28 ins. diam., bears N63 1/2°W, 18 lks. dist., visible marks 1/4 S33. (Record)

The new bearing trees:

- A fir, 10 ins. diam., bears N73 1/2°E, 105 lks. dist., mkd. 1/4 S33 BT.
A pine, 16 ins. diam., bears S9°E, 52 lks. dist., mkd. 1/4 S4 BT.

Bury the original stone alongside and raise a flat mound of stone, 3 ft. diam., around the iron post."

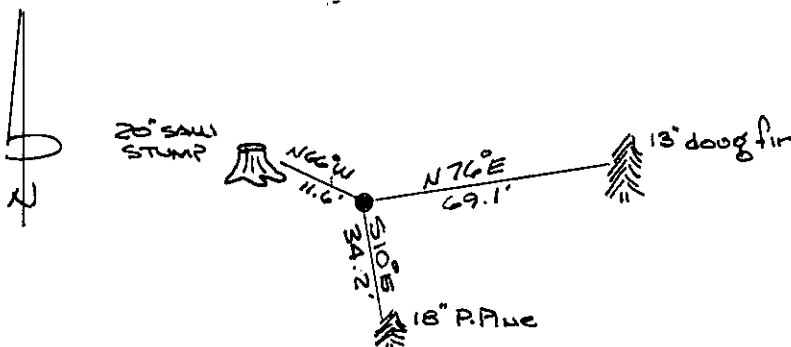
- II. Found a 3 1/4 ins. diam., B.L.M. brass cap on 2 1/2 ins. diam. iron pipe, 1 in. out of ground, cap marked as shown above, from which

- A douglas fir, 13 ins. diam., bears N76°E, 69.1 ft. (104.6 lks.) dist., scribe mrks. overgrown. (B.L.M. record)
A ponderosa pine, 18 ins. diam., bears S10°E, 34.2 ft. (51.8 lks.) dist., visible marks BT. (B.L.M. record)
A saw stump, 2 ft. high by 20 ins. diam., bears N66°W, 11.6 ft. (17.5 lks.) dist., visible marks S33 BT. (G.L.O. record)

- III. Set a 6 ft. galvanized steel guard post with Land Survey Marker decal, South, 3 ft.

Painted red bands around the bearing trees and attached Land Survey Monument and Bearing Tree signs where needed.

Magnetic Declination: East 19°



SKETCH OF CORNER

CERTIFICATION

I, Gary C. Crismon
certify the information shown herein is true and correct.

Signature Ground Earth Official

I, Ronald A. Pearson
certify that this Corner Record correctly represents work performed by me or under my direction in compliance with the "Corner Recordation Act" (70-22-104, et seq. M.C.A.)

Signature of Surveyor & Seal

Date: 7/9/90 Reg. No. 9008-LS

Employer: U.S. FOREST SERVICE

Office of Clerk and Recorder, County of Lincoln. This "corner record" was filed for record on Nov 8, 1990 was noted on the cross-index plat and is assigned page No. 4290, in book No. _____

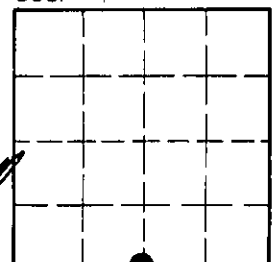
Janet K. Sugilby
County Official

A-11

31 N 31 W

Cross Index No. _____ T. _____ R. _____ PMM

Sec. 4



• - corner this sheet