

INSTRUCTIONS

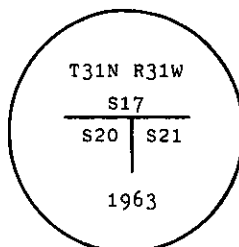
1. Original and/or subsequent record used to evaluate the corner position.
2. Description of evidence found, note discrepancies in the record, state method of establishing lost or obliterated corners.
3. Description of monument and accessories set to perpetuate the corner position.
4. Sketch of corner, show all pertinent data which can best be shown in a sketch example, corner marking, topography ties, position of accessories, etc.
5. Certification must be signed and sealed by Land Surveyor registered in the State of Montana.
6. Fill in Cross Index & Section Diagram at bottom of sheet.

CERTIFIED CORNER RECORDATION

Corner Section Corner S20 and S21 T. 31 N. R. 31 W. P.M.M. Lincoln County

- I. 1893 GLO Record by Mumbrue: Set a post, 4 ft. long, 4 ins. square, 24 ins. in the ground, for cor. to secs. 16, 17, 20 and 21. Marked the post and 4 bearing trees.

1963 BLM Remonumentation by Pittman, Larimer and Grusing: The cor. of secs. 20 and 21, as determined from the remains of the original bearing trees. At the corner point, set and iron post, 30 ins. long, 2 1/2 ins. diam., 26 ins. in the ground, with brass cap mkd.



from which the remains of the original bearing trees:

A stump, 24 ins. diam., bears N. 7° W., 25 lks. dist., visible marks T3 R3 S.
(Record: N. 9 1/4° E., 25 lks.)

A stump, 22 ins. diam., bears S. 53° E., 82 lks. dist., visible marks BT.
(Record: S. 60° E., 82 lks.)

The new bearing trees:

A pine, 7 ins. diam., bears S. 6 3/4° E., 50 lks. dist., mkd. T31N R31W S21 BT.

A pine, 7 ins. diam., bears S 40 1/2° W., 83 lks. dist., mkd. T31N R31W S20 BT.

- II. I found a BLM brass cap, marked as shown above, 2 ins. above ground, from which:

The GLO bearing trees:

A stump, 24 ins. diam., bears N. 2° W., 16.7 ft. (25 lks.) dist., visible marks "T31 R31 S".
(Record: N. 9 1/4° E.)

A stump, 24 ins. diam., bears S. 53° E., 54.1 ft. (82 lks.) dist., visible marks "T31".
(Record: S. 60° E.)

The BLM bearing trees:

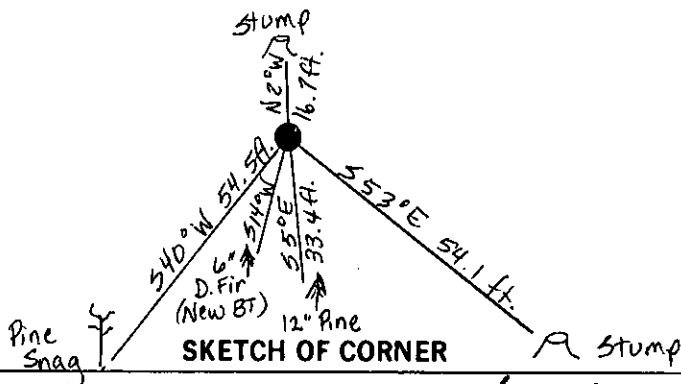
A pine, 12 ins. diam., bears S. 5° E., 33.4 ft. (51 lks.) dist., healed face.

A dead pine, 10 ins. diam., bears S. 40° W., 54.5 ft. (83 lks.) dist., visible marks
"T31N R31W S20 BT".

- III. I marked and scribed one new bearing tree:

A douglas fir, 6 ins. diam., bears S. 14° W., 14.1 ft. dist., scribed T31N R31W S20 BT.

Found all bearing trees painted and signed as noted on corner recordation #3488 by T. Hill, January, 1987.



CERTIFICATION

I, Janet E. Kempff
certify the information shown herein is true and correct.

Janet E. Kempff
Signature Ground Party

I, Alvah F. Hughes
certify that this Corner Record correctly represents work done by me or under my direction in compliance with the
Recordation Act" (70-22-101, et seq., M.C.A.)

Alvah F. Hughes
Signature of Surveyor & Seal

Date: 9/29/88 Reg. No. 7322-8
U.S. FOREST SERVICE

Employer: _____

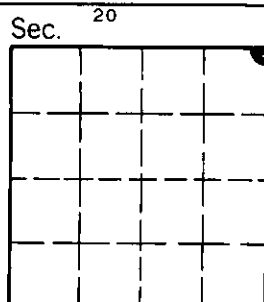
Office of Clerk and Recorder, County of Lincoln. This "corner record" was filed for record on Oct 13, 1988

was noted on the cross-index plat and is assigned page No. 3936 in

book No. _____

Cross Index No. N 9 T. 31 N R. 31 W P.M.M.

Adopted July 1, 1981, Montana Board of Professional Engineers & Land Surveyors



• - corner this sheet

I. ORIGINAL AND/OR SUBSEQUENT RECORD:

The record data helps support the reestablished corner position because it clearly shows what history the surveyor based his corner position on. In some cases, however, the record may be unknown or not pertinent. A statement to that effect should appear on the corner record.

II. DESCRIPTION OF EVIDENCE FOUND OR METHOD OF LOCATING CORNER POSITION:

If no physical evidence of the original or subsequent monuments and accessories can be found, then the method used to reestablish the lost or obliterated corner (single proportion, fence intersection, parol evidence, terrain calls, centerline of road, etc.) shall be indicated.

III. DESCRIPTION OF MONUMENTS AND ACCESSORIES SET TO PERPETUATE THE CORNER POSITION:

References or ties to other corners are optional and may be drawn on the face or back of the corner record form, or references to Certificate of Survey may be made. Separate drawings may be attached to the corner form.

If state plane coordinate values for the corner position are shown, then the control upon which they are based should be indicated.

IV. SKETCH OF CORNER:

This item will usually show how a found or set corner is marked and may also show topography or accessory monuments found or set and their relation to the corner. There is no stipulated format; the sketch could be transcribed field note entries.

V. CERTIFICATION:

The name and signature of the ground party chief is optional.

The Surveyor who performed or directed the field work which is depicted on the "Certified Corner Record" shall sign and affix his seal in the Certification.

The employer blank is optional but useful in tracking down original field note data or adjacent record if, in the future, questions arise about the corner.

vi.

The Cross Index at the bottom of the page should be completed by the Surveyor. Only the single Township Index where the corner is filed shall be completed.

The lower righthand corner is a corner location diagram and should have the pertinent section filled in at the top and a closed circle indicating the appropriate corner position in the section filled in. This is intended to be an aid in searching the "Record" once it has been filed.

