

CERTIFIED LAND CORNER RECORDATION

Section 25 Township 31 North, Range 31 West M.P.B. and M.

DESCRIPTION OF CORNER EVIDENCE FOUND, AND ORIGINAL RECORD (IF KNOWN)

South 1/4 corner and closing corner Sections 30 and 31 found 2" Brasscaps by  
Corps of Engineers.

Section corner 25, 31 and 36 found 1-1/2" Brass Caps

DESCRIPTION OF MONUMENT AND ACCESSORIES ESTABLISHED  
TO PERPETUATE THE ORIGINAL LOCATION OF THIS CORNER:

Date of work: April, 1975

East 1/16 corner to sections 25 and 36 set 1/2" I.D. pipe with Plastic Plug  
marked ( W and R ) in large field with no trees available.  
(4232S )

SKETCH, WITH COURSE AND DISTANCE TO ADJACENT CORNERS IF DETERMINED IN THIS SURVEY.  
(MAY SKETCH OR PASTE REPRODUCTION ON REVERSE SIDE.)

See Reverse Side

Surveyor's Seal

I, Melvin D. Lauteren  
certify that the information shown herein is true and  
correct.

*Melvin D. Lauteren*  
Signature of Ground Party Chief

I, Melvin D. Lauteren  
certify that I have carefully performed or reviewed the  
work done on the diagrammed corner as reported on this  
recording form and approve the same.

*Melvin D. Lauteren*  
Signature of Surveyor

DIAGRAM OF CORNER:

N. See Reverse Side

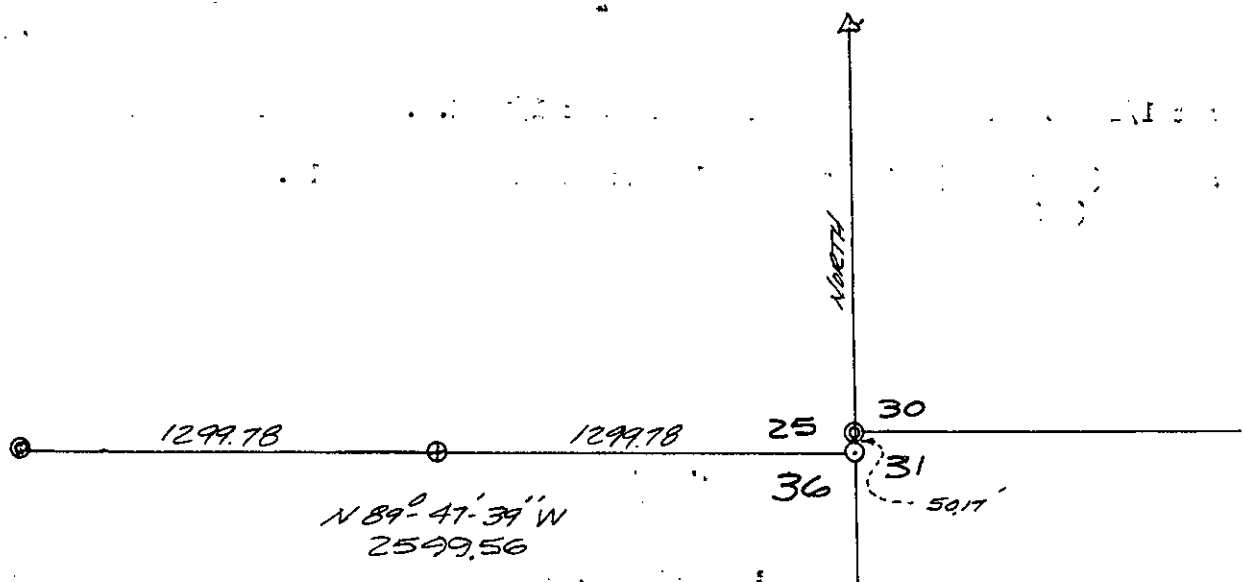
= Corner recorded on the sheet

4232S  
Registration Number

Office of Clerk and Recorder, County of Lincoln

This "corner record" was filed for record on the 30<sup>th</sup> day of April, 1975, was noted on the cross-index plat and is  
assigned page No. 1, in book No. 327

*Thomas L. Vaughan*  
County Official  
*Betty Anderson*  
Deputy



- ⊙ 2 INCH BRASS CAP CORPS OF ENGINEERS.
- ⊕ SET 1/2 INCH I.D. PIPE W/CAP MARKED "W & R 42325"
- ⊙ 1 1/2 INCH BRASS CAP
- △ FOUND "T" BAR