

INSTRUCTIONS:

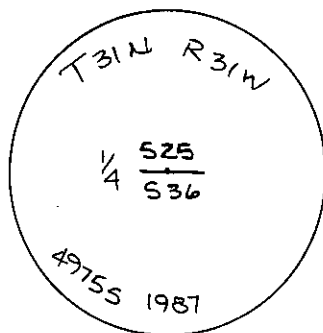
1. Original and/or subsequent record used to evaluate the corner position.
2. Description of evidence found, note discrepancies in the record, state method of establishing lost or obliterated corners.
3. Description of monument and accessories set to perpetuate the corner position.
4. Sketch of corner, show all pertinent data which can best be shown in a sketch example, corner marking, topography ties, position of accessories, etc.
5. Certification must be signed and sealed by Land Surveyor registered in the State of Montana.
6. Fill in Cross Index & Section Diagram at bottom of sheet.

CERTIFIED CORNER RECORDATION

Corner S $\frac{1}{4}$ Section 25 & 36 T. 31 N R. 31 W P.M.M. Lincoln County

- I. This corner was put in by U.S. Corps of Engineers in 1974.
- II. I found a $\frac{3}{4}$ ins. Corps of Engineer's pipe which I replaced with a U.S.D.A. Forest Service Monument. Drove pipe into ground.
- III. 1987 Davis Surveying, Inc.

I set a U.S.D.A. Aluminum Cap and rod, $3\frac{1}{4}$ ins. dia. x 30 ins. long marked:



from which existing BT's;

A 12 ins. spruce bears N $10^{\circ}47'$ E 14.7 ft. from center of tree scribed, $\frac{1}{4}$ S 25. Scribing not visible.

A power pole bears S $51^{\circ}46'$ E 106.7 feet from center of pole scribed, $\frac{1}{4}$ S 36 BT.

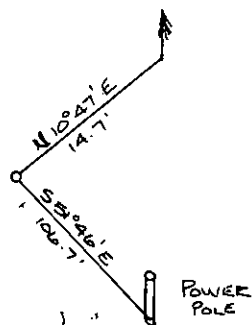
I painted a red band around tree and power pole.

Placed BT sign on front and Land Survey Monument signs on back of tree and power pole. BT sign on power pole old and unreadable.

Buried 12 ins. below surface of existing lawn.

Placed aluminum post 12 ft. SW of monument.

See Attached Unrecorded Corner Recordation Form.



SKETCH OF CORNER

CERTIFICATION

I, Ken E. Davis

certify the information shown herein is true and correct.

Tom Davis

Signature/Ground Party Chief

I, Ken E. Davis

certify that this Corner Record correctly represents work performed by me or under my direction in compliance with the "Corner Recordation Act" (70-22-101, et seq. M.C.S.)

Signature of Surveyor & Seal

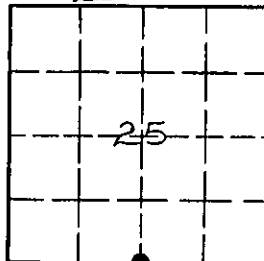
Date: 8/8/87 REGISTERED No. 94975 S

Employer: Davis Surveying, Inc.

Office of Clerk and Recorder, County of Lincoln. This "corner record" was filed for record on Aug 7, 1987 was noted on the cross-index plat and is assigned page No. 3625, in book No. _____

County Official Don

Sec. 25



• corner this sheet
S 36

Cross Index No. _____ T. _____ R. _____ P.M.M.

Adopted July 1, 1981, Montana Board of Professional Engineers & Land Surveyors

INSTRUCTIONS TO SURVEYORS FOR COMPLETION OF CERTIFIED CORNER RECORDATION FORMS

I. ORIGINAL AND/OR SUBSEQUENT RECORD:

This item should describe or quote those portions of the original or subsequent record which were used in evaluating the corner position. The original record will usually be the General Land Office field notes. Subsequent record can come from several sources: Previously filed corner records, maps and plats, private and public records, etc. Some of the subsequent record, even though not in the public record, but known to have validity by the surveyor, may be quoted and appropriately noted.

The record data helps support the reestablished corner position because it clearly shows what history the surveyor based his corner position on. In some cases, however, the record may be unknown or not pertinent. A statement to that effect should appear on the corner record.

II. DESCRIPTION OF EVIDENCE FOUND OR METHOD OF LOCATING CORNER POSITION:

This item will describe the original or subsequent record evidence found. If portions of the found evidence cannot be reconciled with the record, then the disregarded record should be noted, and, if possible, an opinion as to its cause narrated.

If no physical evidence of the original or subsequent monuments and accessories can be found, then the method used to reestablish the lost or obliterated corner (single proportion, fence intersection, parol evidence, terrain calls, centerline of road, etc.) shall be indicated.

III. DESCRIPTION OF MONUMENTS AND ACCESSORIES SET TO PERPETUATE THE CORNER POSITION:

This item should list all details about the corner and its location which will help exclusively identify the corner position; including size and type of monument, how marked if not shown in sketch, and distinguishing topographic calls which help locate the corner. In many cases, instructions on how to find the corner should be included.

References or ties to other corners are optional and may be drawn on the face or back of the corner record form, or references to Certificate of Survey may be made. Separate drawings may be attached to the corner form.

If state plane coordinate values for the corner position are shown, then the control upon which they are based should be indicated.

IV. SKETCH OF CORNER:

This item will usually show how a found or set corner is marked and may also show topography or accessory monuments found or set and their relation to the corner. There is no stipulated format; the sketch could be transcribed field note entries.

V. CERTIFICATION:

The name and signature of the ground party chief is optional.

The Surveyor who performed or directed the field work which is depicted on the "Certified Corner Record" shall sign and affix his seal in the Certification.

The employer blank is optional but useful in tracking down original field note data or adjacent record if, in the future, questions arise about the corner.

VI.

The Cross Index at the bottom of the page should be completed by the Surveyor. Only the single Township Index where the corner is filed shall be completed.

The lower righthand corner is a corner location diagram and should have the pertinent section filled in at the top and a closed circle indicating the appropriate corner position in the section filled in. This is intended to be an aid in searching the "Record" once it has been filed.

CERTIFIED LAND CORNER RECORDATION

DESCRIPTION OF CORNER EVIDENCE FOUND, AND ORIGINAL RECORD (IF KNOWN)

T31N R31W Montana Principal Meridian G.L.O. notes book 2826 page 6 has 4 ft. post 3" square 24" in the ground marked 1/4 on the north face. Found no evidence of the corner or bearing trees. Reset the corner by single proportion method.

DESCRIPTION OF MONUMENT AND ACCESSORIES ESTABLISHED TO PERPETUATE THE ORIGINAL LOCATION OF THIS CORNER:

Date of work: May 74

Set Corps of Engineers brass cap marked as shown on sketch on reverse side. Since the corner fell in Elsie Boothman's front yard just south of Hwy. 37 the brass cap was set 2" below the surface for preservation. Set one bearing tree and one bearing pole and tied to garage and house.

- 1) 10" fir bearing N10°E, 22 lks., marked 1/4 S25 BT
- 2) Power pole bearing S52°E, 160 lks., marked 1/4 S36 BT
- 3) Northwest corner of the Boothman house bearing S6°W, 54 lks.,
- 4) Northeast corner of the garage bearing S40°E, 132 lks.

SKETCH, WITH COURSE AND DISTANCE TO ADJACENT CORNERS IF DETERMINED IN THIS SURVEY. (MAY SKETCH OR PASTE REPRODUCTION ON REVERSE SIDE.)

See reverse side.....

Surveyor's Seal



I, James R. Staples, certify that the information shown herein is true and correct.

Signature of Ground Party Chief

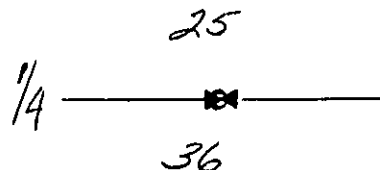
I, JOHN C. ERICKSON, certify that I have carefully performed or reviewed the work done on the diagrammed corner as reported on this recordation form and approve the same.

Signature of Surveyor

39795
Registration Number

DIAGRAM OF CORNER:

T31N R31W
N.



= Corner recorded on the sheet

Office of Clerk and Recorder, County of

This "corner record" was filed for record on the day of 19, was noted on the cross-index plat and is assigned page No., in book No.

County Official

25

