

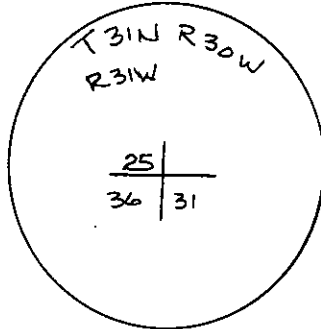
INSTRUCTIONS

1. Original and/or subsequent record used to evaluate the corner position.
2. Description of evidence found, note discrepancies in the record, state method of establishing lost or obliterated corners.
3. Description of monument and accessories set to perpetuate the corner position.
4. Sketch of corner, show all pertinent data which can best be shown in a sketch example, corner marking, topography ties, position of accessories, etc.
5. Certification must be signed and sealed by Land Surveyor registered in the State of Montana.
6. Fill in Cross Index & Section Diagram at bottom of sheet.

CERTIFIED CORNER RECORDATION

Corner Section Corner Common to 25 & T. 31 N R. 30W & 31W P.M.M. Lincoln County
36

I. I found a 2 ins. dia. Brass Cap marked:

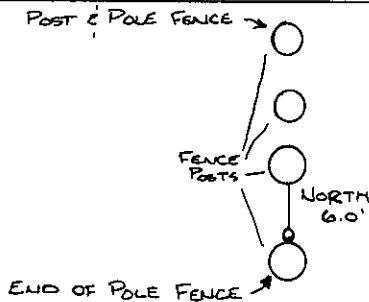


from which
 An 8 ins. fence post bears North 6 ft.
 A 10 ins. fence post bears South 0.0 ft.

II. 1987 Davis Surveying, Inc.

I placed BT signs on front and Land Survey monument on back of treated fence posts.
 Painted red bands around both posts.
 Set an aluminum post 1.0 ft. North of monument.

See Attached Unrecorded Corner Recordation Forms



SKETCH OF CORNER

CERTIFICATION

I, Ken E. Davis
 certify the information shown herein is true and correct.

Tom Davis
 Signature Group Party Chief

I, Ken E. Davis
 certify that this Corner Recordation represents work performed by me or under my direction in compliance with the "Corner Recordation Act" (70-22401, et seq., M.C.A.)

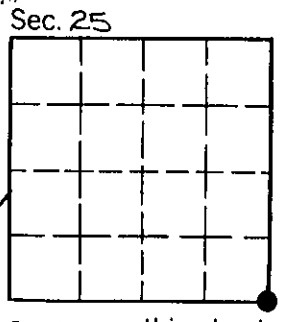
Ken E. Davis
 Signature of Surveyor & Seal

Date: 8/7/87 AREA: S 16 25 15

Employer: Davis Surveying, Inc.

Office of Clerk and Recorder, County of Lincoln. This "corner record" was filed for record on Aug 7, 1987 was noted on the cross-index plat and is assigned page No. 3624, in book No. _____

Janet BF Sigel by Bill Beatty
 County Official Dop



• corner this sheet

INSTRUCTIONS TO SURVEYORS FOR COMPLETION OF CERTIFIED CORNER RECORDATION FORMS

I. ORIGINAL AND/OR SUBSEQUENT RECORD:

This Item should describe or quote those portions of the original or subsequent record which were used in evaluating the corner position. The original record will usually be the General Land Office field notes. Subsequent record can come from several sources: Previously filed corner records, maps and plats, private and public records, etc. Some of the subsequent record, even though not in the public record, but known to have validity by the surveyor, may be quoted and appropriately noted.

The record data helps support the reestablished corner position because it clearly shows what history the surveyor based his corner position on. In some cases, however, the record may be unknown or not pertinent. A statement to that effect should appear on the corner record.

II. DESCRIPTION OF EVIDENCE FOUND OR METHOD OF LOCATING CORNER POSITION:

This Item will describe the original or subsequent record evidence found. If portions of the found evidence cannot be reconciled with the record, then the disregarded record should be noted, and, if possible, an opinion as to its cause narrated.

If no physical evidence of the original or subsequent monuments and accessories can be found, then the method used to reestablish the lost or obliterated corner (single proportion, fence intersection, parol evidence, terrain calls, centerline of road, etc.) shall be indicated.

III. DESCRIPTION OF MONUMENTS AND ACCESSORIES SET TO PERPETUATE THE CORNER POSITION:

This Item should list all details about the corner and its location which will help exclusively identify the corner position; including size and type of monument, how marked if not shown in sketch, and distinguishing topographic calls which help locate the corner. In many cases, instructions on how to find the corner should be included.

References or ties to other corners are optional and may be drawn on the face or back of the corner record form, or references to Certificate of Survey may be made. Separate drawings may be attached to the corner form.

If state plane coordinate values for the corner position are shown, then the control upon which they are based should be indicated.

IV. SKETCH OF CORNER:

This Item will usually show how a found or set corner is marked and may also show topography or accessory monuments found or set and their relation to the corner. There is no stipulated format; the sketch could be transcribed field note entries.

V. CERTIFICATION:

The name and signature of the ground party chief is optional.

The Surveyor who performed or directed the field work which is depicted on the "Certified Corner Record" shall sign and affix his seal in the Certification.

The employer blank is optional but useful in tracking down original field note data or adjacent record if, in the future, questions arise about the corner.

VI.

The Cross Index at the bottom of the page should be completed by the Surveyor. Only the single Township Index where the corner is filed shall be completed.

The lower righthand corner is a corner location diagram and should have the pertinent section filled in at the top and a closed circle indicating the appropriate corner position in the section filled in. This is intended to be an aid in searching the "Record" once it has been filed.

CERTIFIED LAND CORNER RECORDATION

DESCRIPTION OF CORNER EVIDENCE FOUND, AND ORIGINAL RECORD (IF KNOWN)

T31N R30W Montana principal meridian book 3422 page 25 has a 4 ft. post 3" square 2" in the ground marked 30 on the north side and 31 on the south side. Notes indicate that this corner is 77 lks. north of the corner for sections 25 and 36. Found no indication of either post. Found a brass cap (private and not marked).
 T31N R31W R30W
 25 30
 36 31
 Corner was erroneously marked as a single corner
 Changed to read 25 ~~30~~
 36 31

Found: one bearing tree (no recordation) 5" poplar bearing S36 $\frac{1}{2}$ °E, 72 lks., marked S31 T31N R30W

DESCRIPTION OF MONUMENT AND ACCESSORIES ESTABLISHED TO PERPETUATE THE ORIGINAL LOCATION OF THIS CORNER:

Date of work: May 74

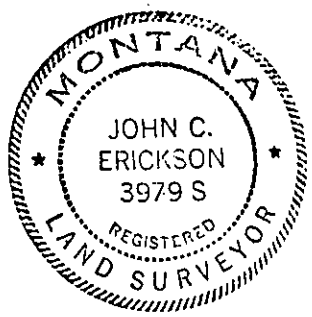
Since original notes indicate a double corner, using notes and proportional measurement on the section line, set a Corps of Engineers brass cap 50.18 ft. north on line from East $\frac{1}{4}$ corner section 25 T31N R31W.

No trees to set bearing trees. Tied Corner to the bearing tree for the other closing corner. See sketch on reverse side.

SKETCH, WITH COURSE AND DISTANCE TO ADJACENT CORNERS IF DETERMINED IN THIS SURVEY. (MAY SKETCH OR PASTE REPRODUCTION ON REVERSE SIDE.)

See sketch on reverse side

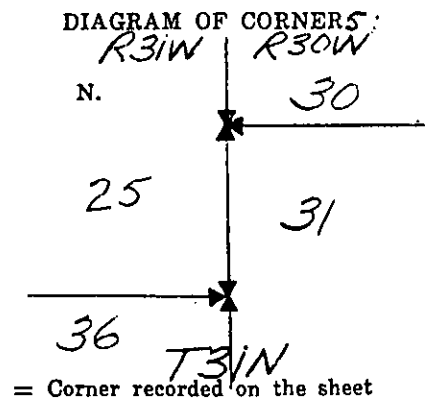
Surveyor's Seal



I, James R. Staples.....
 certify that the information shown herein is true and correct.
James R. Staples
 Signature of Ground Party Chief

I, JOHN C. ERICKSON.....
 certify that I have carefully performed or reviewed the work done on the diagrammed corner as reported on this recordation form and approve the same.
John C. Erickson
 Signature of Surveyor

3979 S
 Registration Number



Office of Clerk and Recorder, County of.....

This "corner record" was filed for record on the day of 19....., was noted on the cross-index plat and is assigned page No....., in book No.....

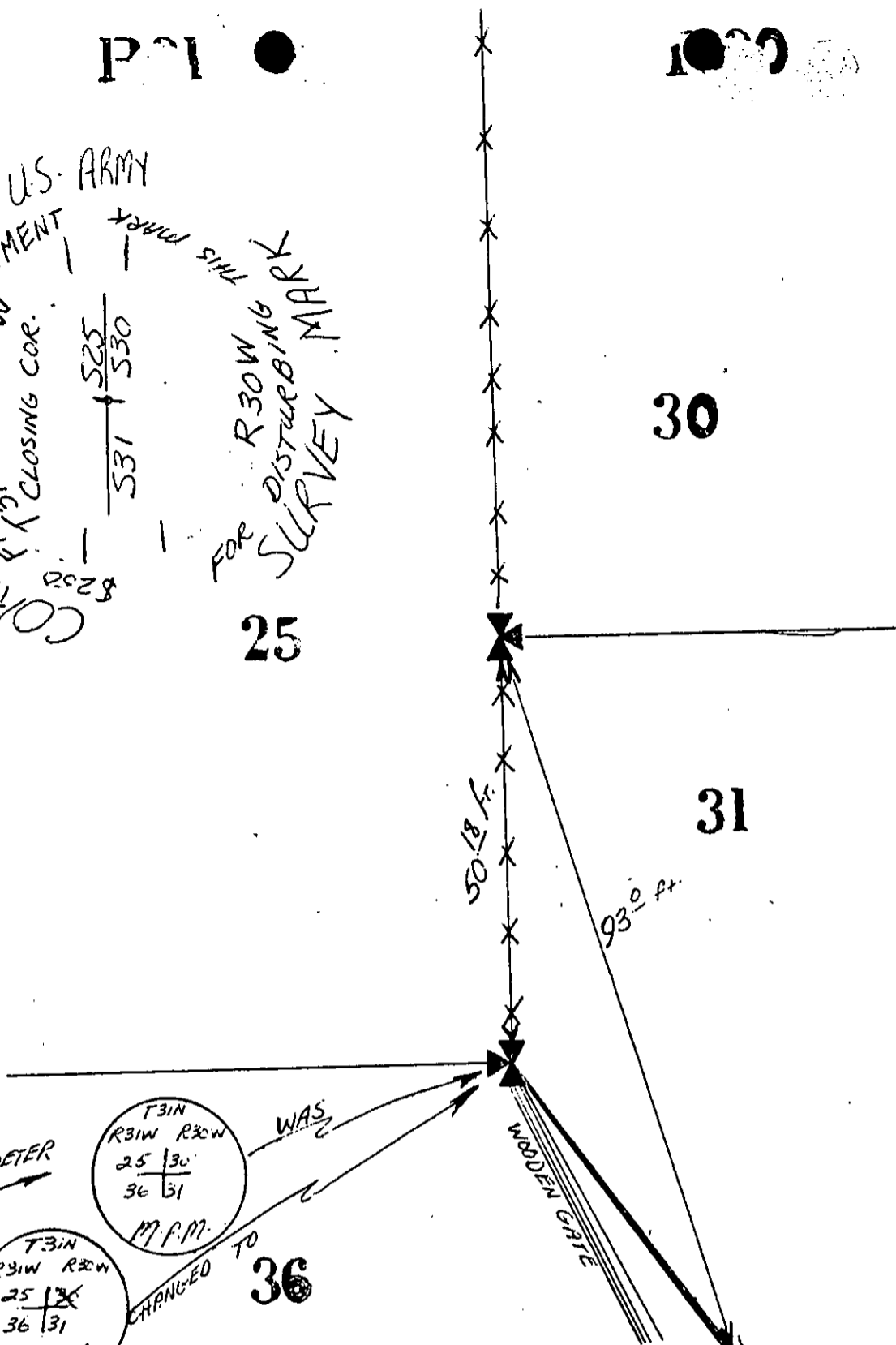
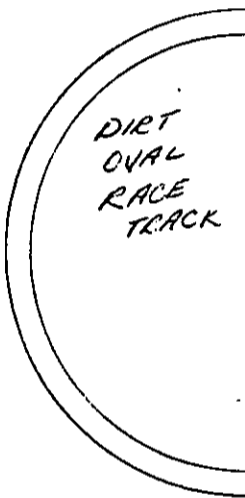
County Official

CORPS OF ENGINEERS U.S. ARMY
 OR - IMPRISONMENT
 FINISH R31W
 CLOSING COR. 525
 531 530
 FOR R30W THIS MARK
 FOR R30W DISTURBING
 SURVEY MARK

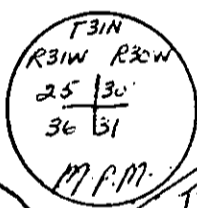
25

30

31



2 1/2" DIAMETER



WAS



CHANGED TO

36

