

CERTIFIED LAND CORNER RECORDATION

SECTION 2 TWP. 31 N., R. 31 W., M.P.M.

DESCRIPTION OF CORNER EVIDENCE FOUND, AND ORIGINAL RECORD (IF KNOWN)

Section 2 Township 31 North, Range 31 West, Montana Principal Meridian

Northeast Section Corner and East 1/4 Corner - Standard Brass Cap Monuments set by BUREAU of LAND MANAGEMENT.

Center East 1/16 Corner Section 2 - Found 3/4" Rebar set by Jack Ninneman

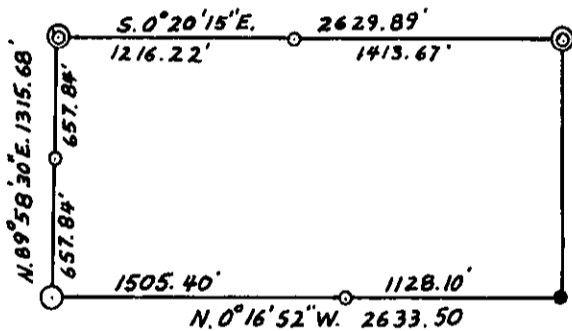
East 1/16 Corner Section 2 and 35 - Found Plastic stake and tack, with witness trees.

DESCRIPTION OF MONUMENT AND ACCESSORIES ESTABLISHED TO PERPETUATE THE ORIGINAL LOCATION OF THIS CORNER:

Date of work: June, 1974

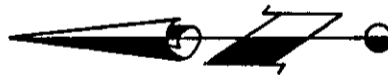
Set 1/2" I.D. pipes as shown on sketch.

SKETCH, WITH COURSE AND DISTANCE TO ADJACENT CORNERS IF DETERMINED IN THIS SURVEY. (MAY SKETCH OR PASTE REPRODUCTION ON REVERSE SIDE.)



Legion

- ⊙ = Set 1/2" I.D. Pipe
- = Found 3/4" Rebar
- ⊙ = Found standard B.L.M. Brass Cap
- ⊙ = Found Plastic Stake and tack



Surveyor's Seal



I, Melvin D. Lauteren
certify that the information shown herein is true and correct.

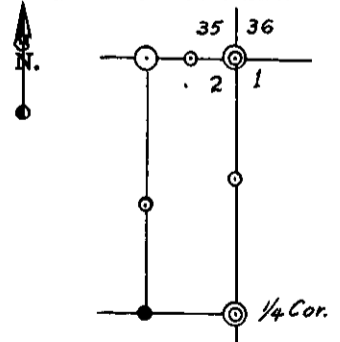
Melvin D. Lauteren
Signature of Ground Party Chief

I, Melvin D. Lauteren
certify that I have carefully performed or reviewed the work done on the diagrammed corner as reported on this recordation form and approve the same.

Melvin D. Lauteren
Signature of Surveyor

Montana License # 42055
Registration Number

DIAGRAM OF CORNER:



⊙ = Corner recorded on the sheet

Office of Clerk and Recorder, County of Lincoln County

This "corner record" was filed for record on the 16th day of July, 1974, was noted on the cross-index plat and is assigned page No. 355, in book No. 1

Eleanor L. Vaughn Mac Watson
County Official