

CERTIFIED LAND CORNER RECORDATION

SECTION 2 TWP. 31 N., R. 31 W., M.P.M.

DESCRIPTION OF CORNER EVIDENCE FOUND, AND ORIGINAL RECORD (IF KNOWN)

Section 2 Twp. 31 N., R. 31 W/, M.P.M.

West  $\frac{1}{4}$  Corner, East  $\frac{1}{4}$  Corner, Southeast Corner, South  $\frac{1}{4}$  Corner, Southwest Corner - All Standard Brass cap monuments set by B.L.M.

Center of Section - a large corner fence post accepted by contiguous owners as center point.

DESCRIPTION OF MONUMENT AND ACCESSORIES ESTABLISHED TO PERPETUATE THE ORIGINAL LOCATION OF THIS CORNER:

Date of work: Oct. & Nov. 1973

We set steel rods with bearing trees and standard posters all as shown on diagram on reverse.

SKETCH, WITH COURSE AND DISTANCE TO ADJACENT CORNERS IF DETERMINED IN THIS SURVEY. (MAY SKETCH OR PASTE REPRODUCTION ON REVERSE SIDE.)

SEE OTHER SIDE

Surveyor's Seal

I, Jack H. Ninneman  
certify that the information shown herein is true and correct.

*Jack H. Ninneman*  
Signature of Ground Party Chief

Jack W. Ninneman  
I, certify that I have carefully performed or reviewed the work done on the diagrammed corner as reported on this recordation form and approve the same.

*Jack W. Ninneman*  
Signature of Surveyor

DIAGRAM OF CORNER:

N.  
See other side

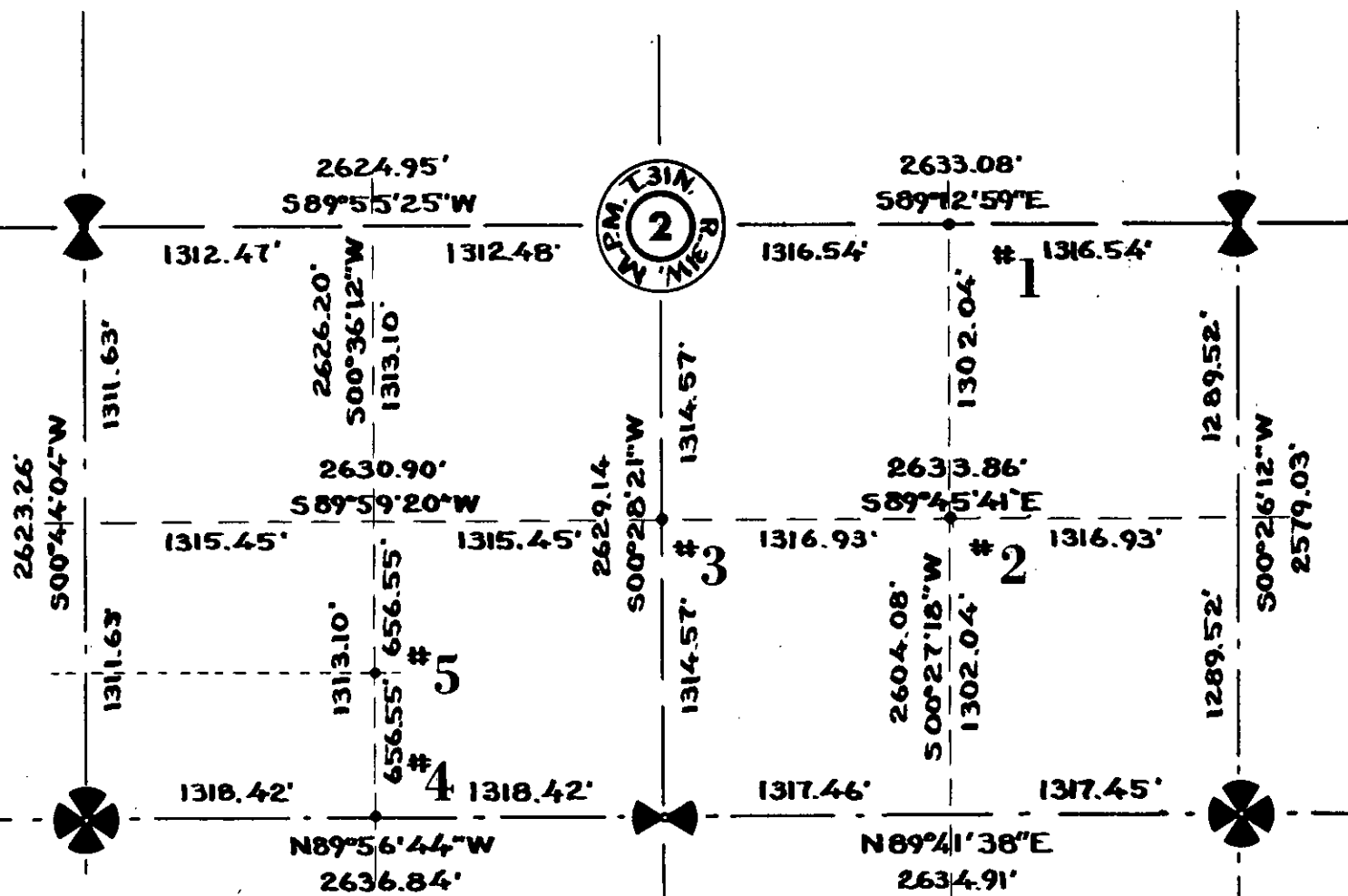
= Corner recorded on the sheet

Montana License # 534 E.S.  
Registration Number

Office of Clerk and Recorder, County of *Lincoln*

This "corner record" was filed for record on the *21st* day of *November* 19 *73*, was noted on the cross-index plat and is assigned page No. *300*, in book No. *1*

*Esther L. Vaughn* *Mae Watson*  
County Official



## RECORDATION OF MONUMENTS SET IN SEC. 2 TWP. 31N., R. 31W., M.P.M.

- #1 C 1/16 E Set a steel pin from which an 8" Fir bears N 39° 20' E 6.90 Feet-Scribed C 1/16 E Posted with a Location Poster Also a 9" Larch bears S 8° 45' W 16.6 Feet - Scribed C 1/16 E.
- #2 S 1/16 E Set a steel pin from which a 12" Spruce bears S 88° W 25.4 Feet-Scribed S 1/16 E BT Also a 12" Spruce bears S 53° 30' E 16.90 Feet-Scribed S 1/16 E BT. Also an 18" snag bears East 11.8 Feet Which is posted.
- #3 C 1/16 S Set a steel pin from which an 8" Fir bears S 86° E 17.7 Feet-Scribed C 1/16 S BT Also an 8" Larch bears S 63° W 15.70 Feet Scribed C 1/16 S- Also a 4" Fir which bears N 52° W 3.0 Feet which is posted.
- #4 W 1/16 Set a steel pin from which a 10" Spruce bears S 65° W 4.8 Feet-Scribed W 1/16 and posted with a location poster and 2 Forest Service Boundary signs- Also a 12" Fir Bears N 4° 30' E 21 Feet - Scribed W 1/16
- #5 N.E. Cor. S  $\frac{1}{2}$  SW  $\frac{1}{4}$  SW  $\frac{1}{4}$  - Set a steel pin.