

INSTRUCTIONS

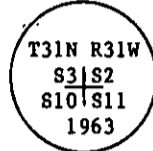
1. Original and/or subsequent record used to evaluate the corner position.
2. Description of evidence found, note discrepancies in the record, state method of establishing lost or obliterated corners.
3. Description of monument and accessories set to perpetuate the corner position.
4. Sketch of corner, show all pertinent data which can best be shown in a sketch example, corner marking, topography ties, position of accessories, etc.
5. Certification must be signed and sealed by Land Surveyor registered in the State of Montana.
6. Fill in Cross Index & Section Diagram at bottom of sheet.

CERTIFIED CORNER RECORDATION

Corner SW S2 T. 31N. R. 31W. P.M.M. Lincoln County

I. 1893 Original GLO Record: Set a granite stone, 12x10x8 ins., 8 ins. in the ground, for cor. of secs. 2,3,10 and 11, marked with 5 notches on S. and 2 notches on E. edges and marked four bearing trees.

1963 BLM Recordation: The cor. of secs. 2,3,10 and 11, monumented with a granite stone, 16x10x8 ins., firmly set and mkd. with 2 grooves on the E. and 5 grooves on the S. faces, and witnessed by three of the original bearing trees. At the corner point, set an iron post, 30 ins. long, 2 1/2 ins. diam., 28 ins. in the ground, with brass cap mkd. as shown:



Original bearing trees:

- A larch, 11 ins. diam., bears N37 1/4°E, 28 lks. dist., mkd. with an overgrown blaze (record).
- A fir, 16 ins. diam., bears S54 3/4°E, 10 lks. dist., mkd. with an overgrown blaze (record).
- A larch, 13 ins. diam., bears N64 1/4°W, 10 lks. dist., visible marks "31 R32 S3 BT" (record).

New bearing tree:

A fir, 7 ins. diam., bears S57°W, 41 lks. dist., mkd. T31N R31W S10 BT.

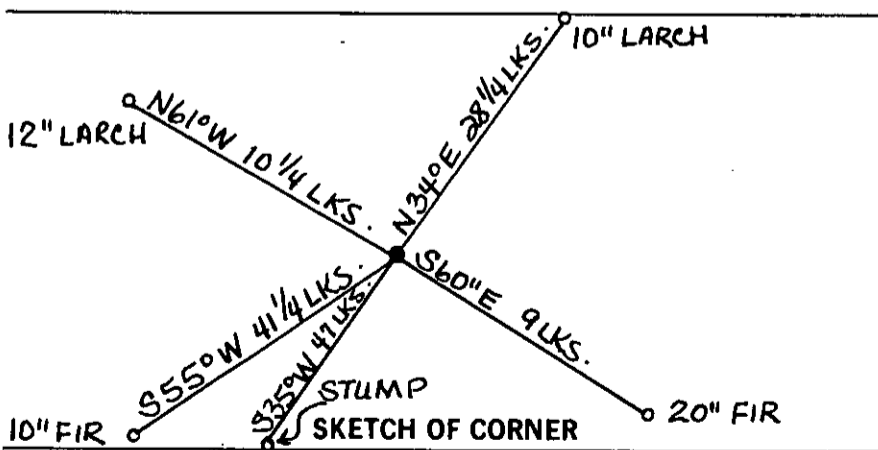
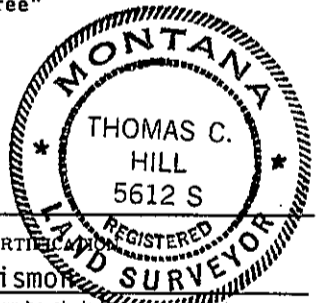
Bury the original stone alongside of the iron post.

II. Found: A 1963 BLM brass cap on iron pipe, flush with the ground; from which

- A larch, 10 ins. diam., bears N34°E, 28 1/2 lks. dist., scribe overgrown.
- A fir, 20 ins. diam., bears S60°E (rcd: S45°30'E), 9 lks. dist., scribe overgrown.
- A fir, 10 ins. diam., bears S55°W, 41 1/2 lks. dist., scribe overgrown.
- A stump, bears S35°W, 47 lks. dist., log portion has visible scribe.
- A Larch, 12 ins. diam., bears N61°W, 10 1/2 lks. dist., scribe visible.

III. Perpetuation: Set a 6 ft. galvanized steel post, 16 ins. in the ground with "Survey Marker" decal attached, bears East, 3 lks. dist.

Painted red: 6 in. bands and scribe blazes, and posted "Bearing Tree" and "Survey Monument" signs on bearing trees.



CERTIFIED AND REGISTERED LAND SURVEYOR

I, Gary C. Crismon certify the information shown herein is true and correct.

Gary C. Crismon  
Signature Ground Party Chief

I, Thomas C. Hill certify that this Corner Record correctly represents work performed by me or under my direction in compliance with the "Corner Recordation Act" (MCA) 22-101, et seq., M.C.A.)

Thomas C. Hill  
Signature of Surveyor & Seal

Date: 1-25-85 Reg. No. 5612S

Employer: U.S.F.S.

Office of Clerk and Recorder, County of Lincoln. This "corner record" was filed for record on Jan 28, 1985 was noted on the cross-index plat and is assigned page No. 2914, in book No. \_\_\_\_\_

Janet St.iegel by Del Busch  
County Official Deputy

Sec. 2


• corner this sheet

# INSTRUCTIONS TO SURVEYORS FOR COMPLETION OF CERTIFIED CORNER RECORDATION FORMS

## I. ORIGINAL AND/OR SUBSEQUENT RECORD:

This item should describe or quote those portions of the original or subsequent record which were used in evaluating the corner position. The original record will usually be the General Land Office field notes. Subsequent record can come from several sources: Previously filed corner records, maps and plats, private and public records, etc. Some of the subsequent record, even though not in the public record, but known to have validity by the surveyor, may be quoted and appropriately noted.

The record data helps support the reestablished corner position because it clearly shows what history the surveyor based his corner position on. In some cases, however, the record may be unknown or not pertinent. A statement to that effect should appear on the corner record.

## II. DESCRIPTION OF EVIDENCE FOUND OR METHOD OF LOCATING CORNER POSITION:

This item will describe the original or subsequent record evidence found. If portions of the found evidence cannot be reconciled with the record, then the disregarded record should be noted, and, if possible, an opinion as to its cause narrated.

If no physical evidence of the original or subsequent monuments and accessories can be found, then the method used to reestablish the lost or obliterated corner (single proportion, fence intersection, parol evidence, terrain calls, centerline of road, etc.) shall be indicated.

## III. DESCRIPTION OF MONUMENTS AND ACCESSORIES SET TO PERPETUATE THE CORNER POSITION:

This item should list all details about the corner and its location which will help exclusively identify the corner position; including size and type of monument, how marked if not shown in sketch, and distinguishing topographic calls which help locate the corner. In many cases, instructions on how to find the corner should be included.

References or ties to other corners are optional and may be drawn on the face or back of the corner record form, or references to Certificate of Survey may be made. Separate drawings may be attached to the corner form.

If state plane coordinate values for the corner position are shown, then the control upon which they are based should be indicated.

## IV. SKETCH OF CORNER:

This item will usually show how a found or set corner is marked and may also show topography or accessory monuments found or set and their relation to the corner. There is no stipulated format; the sketch could be transcribed field note entries.

## V. CERTIFICATION:

The name and signature of the ground party chief is optional.

The Surveyor who performed or directed the field work which is depicted on the "Certified Corner Record" shall sign and affix his seal in the Certification.

The employer blank is optional but useful in tracking down original field note data or adjacent record if, in the future, questions arise about the corner.

## VI.

The Cross Index at the bottom of the page should be completed by the Surveyor. Only the single Township Index where the corner is filed shall be completed.

The lower righthand corner is a corner location diagram and should have the pertinent section filled in at the top and a closed circle indicating the appropriate corner position in the section filled in. This is intended to be an aid in searching the "Record" once it has been filed.