

## INSTRUCTIONS

1. Original and/or subsequent record used to evaluate the corner position.
2. Description of evidence found, note discrepancies in the record, state method of establishing lost or obliterated corners.
3. Description of monument and accessories set to perpetuate the corner position.
4. Sketch of corner, show all pertinent data which can best be shown in a sketch example, corner marking, topography ties, position of accessories, etc.
5. Certification must be signed and sealed by Land Surveyor registered in the State of Montana.
6. Fill in Cross Index & Section Diagram at bottom of sheet.

## CERTIFIED CORNER RECORDATION

Corner NW S1 T. 31N. R. 31W. P.M.M. Lincoln County

- I. 1893 Original GLO Record: Set a limestone, 30x8x7 ins., 23 ins. in the ground, for the cor. of secs. 1,2,35 and 36, marked with 1 notch on E. and 5 notches on W. edges and marked four bearing trees.

1963 BLM Remonumentation: At the cor. of secs. 1,2,35 and 36, on the S. bdy. of the Tp., monumented with a limestone, 20x8x6 ins., firmly set and mkd. as described in the official record, and witnessed by the remains of the original bearing trees. At the corner point, set an iron post, 30 ins. long, 2 1/4 ins. diam., 24 ins. in the ground, with brass cap mkd. as shown:

T32N R31W  
835/836  
82/81  
T31N  
1963

Remains of the original bearing trees:

A fir, 18 ins. diam., bears N50 1/4°E, 84 lks. dist., visible marks "2 R3 36" (record: N53 1/4°E, 84 lks.).  
A stump, 24 ins. diam., bears S50 1/4°E, 77 lks. dist., with illegible marks (record: S49 3/4°E, 78 lks.).  
A stump, 22 ins. diam., bears S27°W, 59 lks. dist., with illegible marks (record).  
A stump, 30 ins. diam., bears N21 3/4°W, 125 lks. dist., mkd. "T32N R31W 835 BT" (record: N21 3/4°W, 12 lks.).

New bearing trees:

A pine, 7 ins. diam., bears S41 1/4°E, 41 lks. dist., mkd. T31N R31W 81 BT.  
A pine, 9 ins. diam., bears S9 1/4°W, 39 lks. dist., mkd. T31N R31W 82 BT.  
A larch, 6 ins. diam., bears N18°W, 32 lks. dist., mkd. T32N R31W 835 BT.

Bury the original stone alongside of the iron post.

- II. Found: A 1963 BLM brass cap, 3 ins. dia., on iron pipe, 5 ins. out of ground - original stone set north, 5 ins. from pipe, grooves N. and S., and X on top are visible.

A fir, 20 ins. diam., bears N51°E, 85 lks. dist., scribe visible.  
A saw stump, bears S49°E, 77 1/4 lks. dist., scribe visible.  
A dead pine, 10 ins. diam., bears S39°E, 41 3/4 lks. dist., scribe visible.  
A dead pine, 10 ins. diam., bears S13°W, (recd: S9 1/4°W), 39 3/4 lks. dist., no visible scribe.  
A saw stump, bears S26°W, 59 1/4 lks. dist., no visible scribe.  
A larch, 7 ins. diam., bears N17°W, 31 1/2 lks. dist., scribe overgrown.  
A saw stump, bears N22°W, 125 1/2 lks. dist. (recd: 12 lks.), all scribe visible.

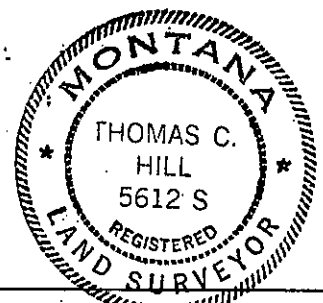
- III. Perpetuation: Marked new bearing trees:

A larch, 10 ins. diam., bears S64°E, 84 lks. dist., scribed T31N R31W 81 BT.  
A larch, 10 ins. diam., bears S51°W, 53 1/2 lks. dist., scribed T31N R31W 82 BT.

Set a 6 ft. galvanized steel post, 20 ins. in the ground, with "Survey Marker" decal attached, bears Northeast, 3 lks. dist.

Painted red: 6 in. bands and scribe blades, and posted "Bearing Tree" and "Survey Monument" signs on bearing trees.

Set a "Location Poster" on Road No. 755, cor. bears North, 290 ft. dist.



## CERTIFICATION

I, Gary C. Crismon  
certify the information shown herein is true and correct.

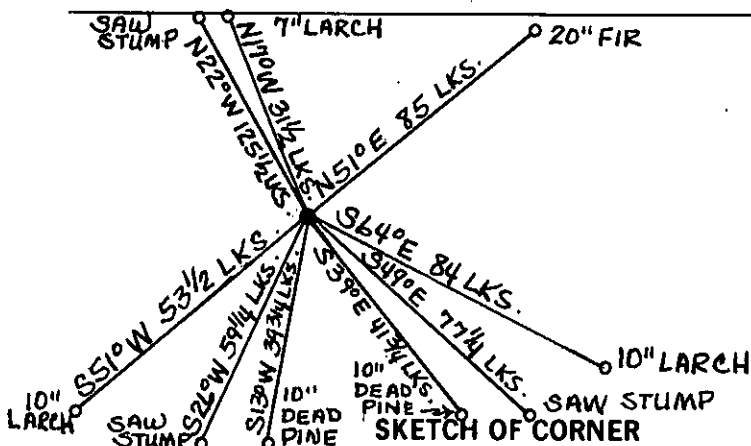
Gary C. Crismon  
Signature Ground Party Chief

I, Thomas C. Hill  
certify that this Corner Record correctly represents work performed by me or under my direction in compliance with the "Corner Recordation Act" (10-22-101, et seq., M.C.A.)

Thomas C. Hill  
Signature of Surveyor & Seal

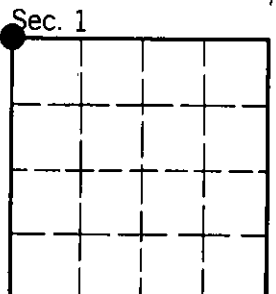
Date: 1-25-85 Reg. No. 5612S

Employer: U.S.F.S.



Office of Clerk and Recorder, County of Lincoln. This "corner record" was filed for record on Jan 28, 1985 was noted on the cross-index plat and is assigned page No. 2912, in book No. \_\_\_\_\_

Janet B. Sigel by Bill Smith  
County Official Deputy



• corner this sheet

# INSTRUCTIONS TO SURVEYORS FOR COMPLETION OF CERTIFIED CORNER RECORDATION FORMS

## I. ORIGINAL AND/OR SUBSEQUENT RECORD:

This item should describe or quote those portions of the original or subsequent record which were used in evaluating the corner position. The original record will usually be the General Land Office field notes. Subsequent record can come from several sources: Previously filed corner records, maps and plats, private and public records, etc. Some of the subsequent record, even though not in the public record, but known to have validity by the surveyor, may be quoted and appropriately noted.

The record data helps support the reestablished corner position because it clearly shows what history the surveyor based his corner position on. In some cases, however, the record may be unknown or not pertinent. A statement to that effect should appear on the corner record.

## II. DESCRIPTION OF EVIDENCE FOUND OR METHOD OF LOCATING CORNER POSITION:

This item will describe the original or subsequent record evidence found. If portions of the found evidence cannot be reconciled with the record, then the disregarded record should be noted, and, if possible, an opinion as to its cause narrated.

If no physical evidence of the original or subsequent monuments and accessories can be found, then the method used to reestablish the lost or obliterated corner (single proportion, fence intersection, parol evidence, terrain calls, centerline of road, etc.) **shall** be indicated.

## III. DESCRIPTION OF MONUMENTS AND ACCESSORIES SET TO PERPETUATE THE CORNER POSITION:

This item should list all details about the corner and its location which will help exclusively identify the corner position; including size and type of monument, how marked if not shown in sketch, and distinguishing topographic calls which help locate the corner. In many cases, instructions on how to find the corner should be included.

References or ties to other corners are optional and may be drawn on the face or back of the corner record form, or references to Certificate of Survey may be made. Separate drawings may be attached to the corner form.

If state plane coordinate values for the corner position are shown, then the control upon which they are based should be indicated.

## IV. SKETCH OF CORNER:

This item will usually show how a found or set corner is marked and may also show topography or accessory monuments found or set and their relation to the corner. There is no stipulated format; the sketch could be transcribed field note entries.

## V. CERTIFICATION:

The name and signature of the ground party chief is optional.

The Surveyor who performed or directed the field work which is depicted on the "Certified Corner Record" shall sign and affix his seal in the Certification.

The employer blank is optional but useful in tracking down original field note data or adjacent record if, in the future, questions arise about the corner.

## VI.

The Cross Index at the bottom of the page should be completed by the Surveyor. Only the single Township Index where the corner is filed shall be completed.

The lower righthand corner is a corner location diagram and should have the pertinent section filled in at the top and a closed circle indicating the appropriate corner position in the section filled in. This is intended to be an aid in searching the "Record" once it has been filed.