

# CERTIFIED LAND CORNER RECORDATION

## DESCRIPTION OF CORNER EVIDENCE FOUND, AND ORIGINAL RECORD (IF KNOWN)

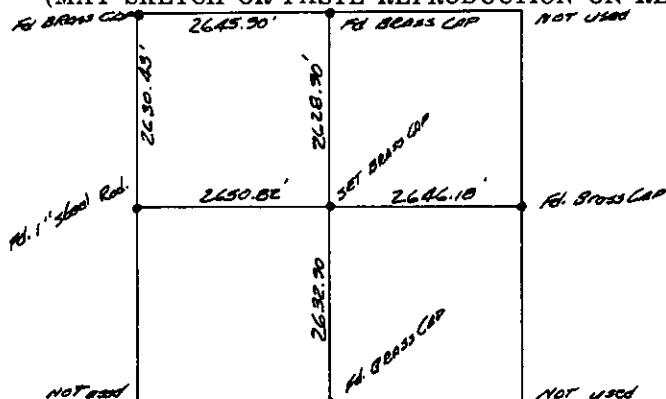
NORTH  $\frac{1}{4}$  Corner, SOUTH  $\frac{1}{4}$  Corner, EAST  $\frac{1}{4}$  Corner, and NORTHWEST Corner all brass caps found and replaced by U.S.B.L.M. in cooperation with U.S.F.S. WEST  $\frac{1}{4}$  Corner found 1" steel rod covered by previous recordation. Center section found  $\frac{3}{4}$ " steel rod as shown by Corner Recordation Index No. T-19 dated July 1965.

## DESCRIPTION OF MONUMENT AND ACCESSORIES ESTABLISHED TO PERPETUATE THE ORIGINAL LOCATION OF THIS CORNER:

Date of work: Dec. 1971

At center of Section 26, T.31N., R.31W. P.M. set brass cap marked Section 26, T.31N., R.31W. from which a 12" fir scribed center Section 26, bears S.10°W 58.8 feet and tagged with standard bearing tree sign and a 8" fir scribed center Section 26, bears S75°W30.4 feet and tagged with standard bearing tree sign. Retraced NORTH-SOUTH and EAST-WEST line through this Section from which the brass cap is located 4.55' feet NORTH and 1.23' feet EAST of previous Center Section, Corner Recordation Index No. T-19, dated July 1965.

## SKETCH, WITH COURSE AND DISTANCE TO ADJACENT CORNERS IF DETERMINED IN THIS SURVEY. (MAY SKETCH OR PASTE REPRODUCTION ON REVERSE SIDE.)



Surveyor's Seal



I, Michael R. Pine  
certify that the information shown herein is true and correct.

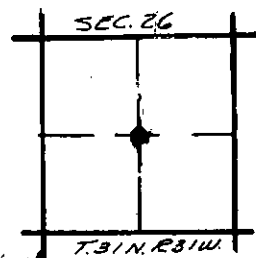
Michael R. Pine  
Signature of Ground Party Chief

I, Philip L. Sargent  
certify that I have carefully performed or reviewed the work done on the diagrammed corner as reported on this recordation form and approve the same.

Philip L. Sargent  
Signature of Surveyor

## DIAGRAM OF CORNER:

N.



= Corner recorded on the sheet

2235 S  
Registration Number

Office of Clerk and Recorder, County of Lincoln

This "corner record" was filed for record on the 5th day of January 1972, was noted on the cross-index plat and is assigned page No. 252, in book No. 1

County Official