

CERTIFIED LAND CORNER RECORDATION

DESCRIPTION OF CORNER EVIDENCE FOUND, AND ORIGINAL RECORD (IF KNOWN)

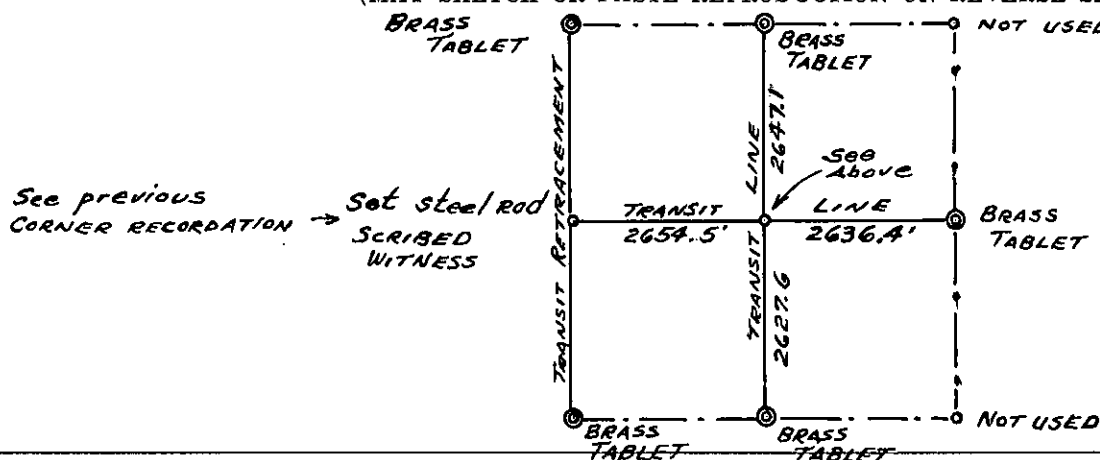
North $\frac{1}{4}$ Corner, South $\frac{1}{4}$ Corner, East $\frac{1}{4}$ Corner, Northwest Corner, and Southwest Corner all replaced by U. S.B.L.M. in cooperation with U.S.F.S. West $\frac{1}{4}$ Corner covered by previous recordation (this line retraced by transit) North- south line and east-west line through the center of this section were run by transit tape traverse. Straight line intersection at center in accordance with G.L.O. procedure.

DESCRIPTION OF MONUMENT AND ACCESSORIES ESTABLISHED TO PERPETUATE THE ORIGINAL LOCATION OF THIS CORNER:

At the center of Section 26 Twp. 31 N., R. 31 W., M.P.M. set a $\frac{3}{4}$ inch steel rod from which a 5" Fir bears S 45 E 0.75 feet blazed and scribed CENTER 26

Date of work: July 1965.

SKETCH, WITH COURSE AND DISTANCE TO ADJACENT CORNERS IF DETERMINED IN THIS SURVEY. (MAY SKETCH OR PASTE REPRODUCTION ON REVERSE SIDE.)



Surveyor's Seal

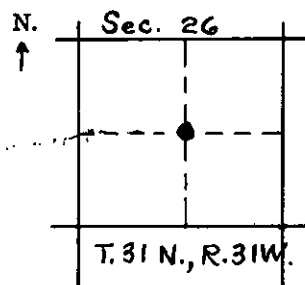
I, J. W. Pinneman
certify that the information shown herein is true and correct.

J. W. Pinneman
Signature of Ground Party Chief

I, J. W. Pinneman
certify that I have carefully performed or reviewed the work done on the diagrammed corner as reported on this recordation form and approve the same.

J. W. Pinneman
Signature of Surveyor

DIAGRAM OF CORNER:



● = Corner recorded on the sheet

534 E.S.
Registration Number

Office of Clerk and Recorder, County of Lincoln

This "corner record" was filed for record on the 5th day of October 19 65, was noted on the cross-index plat and is assigned page No. 25, in book No. 1

M. M. MANSFIELD, By: Verde Higdon
County Official Deputy.