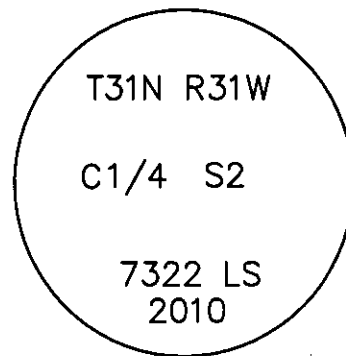


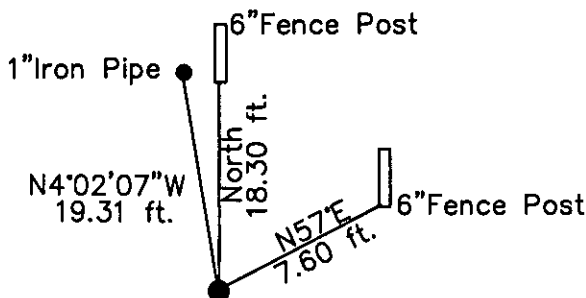
CERTIFIED CORNER RECORDATION

Corner C 1/4 S2 T 31 N. R. 31 W. P.M.M. Lincoln County

- I. Record: 1973: Certificate of Survey No. 3 by Ninneman Engineering, Lincoln County Records, "Steel pipe driven next to East side of corner fence post".
- II. Found: A 1 inch diameter iron pipe firmly set along side existing barb wire fence, which bears N04°02'07"W, 19.31 feet from corner point determined by survey. Not accepted this survey.
- III. Perpetuation: At the corner point, determined by survey, set a 2 1/2 ins. diam. Aluminum pipe 30 ins. long, 29 ins. in the ground, with a 3 1/4 ins. diam. Aluminum cap marked as shown below from which:
- A treated wood fence post, 6 ins. diam., bears N57°E, 7.60 ft. dist.
- A treated wood fence post, 6 ins. diam., bears North, 18.30 ft. dist.
- Attached Survey Monument and Bearing Tree signs.
- Magnetic declination: 18° East
- Equipment used: Hand compass and loggers tape



Kootenai Surveyors Inc., 314 California Av., Libby, MT. 59923 (406) 293-4354



SICHTING Sec. 2

SKETCH OF CORNER

CERTIFICATION

I, Kelly Rooney
certify the information shown herein is true and correct.
Kelly Rooney
Signature Ground Party Chief

I, Alvah F. Hughes
certify that this Corner Record correctly represents work performed by me or under my direction in compliance with the "Corner Recordation Act" (70-22-101, et seq., M.C.A.)
Alvah F. Hughes
Signature of Surveyor & Seal

Date: 03/22/2010 Reg. No. 7322LS
Employer: Kootenai Surveyors Inc.

Office of Clerk and Recorder, County of Lincoln This "corner

record" 225241 BOOK: CCR CC&R'S PAGE: 11503 Pages: 1

STATE OF MONTANA LINCOLN COUNTY

was NO RECORDED: 03/24/2010 2:28 KOI: CC&R'S

book NTAMMY D. LAUER CLERK AND RECORDER

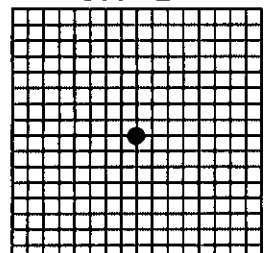
FEE: \$0.00

BY: Kell Blomdahl, Deputy
O: KOOTENAI SURVEYORS INC. P.O. BOX 393, LIBBY, MT 59923

Cross Index No. C 19 T. 31N R. 31W P.M., MT

Adopted July 1, 1981, Montana Board of Professional Engineers & Land Surveyors

Sec. 2



• corner this sheet