

CERTIFIED CORNER RECORDATION

Corner N 1/16 S30 T 31 N. R. 31 W. P.M.M. Lincoln County

- I. Record: 2009 "Court Ordered Survey", Book 324, Page 602 Lincoln County Records, Exhibit "A" by Davis Surveying.
- II. Found: A 5/8 diam. rebar with plastic cap stamped K.E.D 4975S, which bears N02°23'30"E, 3.52 ft. dist. from the corner point determined by survey. Not accepted this survey.
- III. Perpetuation: At the corner point, determined by survey, set a 5/8 ins. diam. steel rebar 24 ins. long, 22 ins. in the ground, with a 3 1/4 ins. diam. Aluminum cap marked as shown below from which:

A Douglas fir, 16 ins. diam., bears N80°E, 9.10 ft. dist., scribed N 1/16 S30 BT.

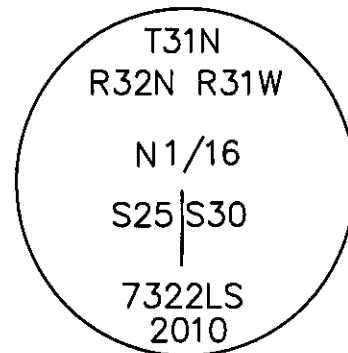
A Douglas fir, 11 ins. diam., bears S24°W, 14.65 ft. dist., scribed N 1/16 S25 BT.

Painted faces and 6 in. wide red bands to all bearing trees and attached Land Survey Monument and Bearing Tree signs.

Set a steel fence post along side set monument.

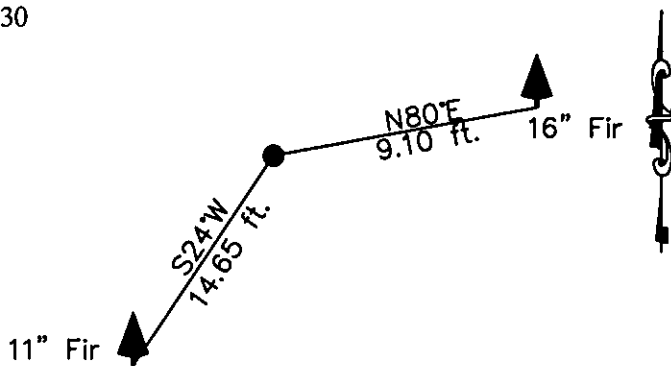
Magnetic declination: 18° East

Equipment used: Hand compass and loggers tape



Kootenai Surveyors Inc., 314 California Av., Libby, MT. 59923 (406) 293-4354

NOBLE Sec. 30



SKETCH OF CORNER

CERTIFICATION

I, Kelly Rooney
certify the information shown herein is true and correct.
Kelly Rooney
Signature Ground Party Chief

I, Alvah F. Hughes
certify that this Corner Record correctly represents work performed by me or under my direction in compliance with the Corner Recordation Act, (70-22-101, et seq., M.C.A.)
Alvah F. Hughes
Signature of Surveyor & Seal

Date: 01/14/2010 Reg. No. 7322LS
Employer: Kootenai Surveyors Inc.



Office of Clerk and Recorder, County of Lincoln This "corner

record" was filed for record on 224496 BOOK: CCR CC&R'S PAGE: 11444 Pages: 1

was noted on the cross STATE OF MONTANA LINCOLN COUNTY
book No. RECORDED: 02/12/2010 3:20 KOI: CC&R'S

TAMMY D. LAUER CLERK AND RECORDER

FEE: \$0.00

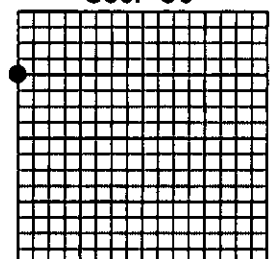
BY [Signature]

TO: KOOTENAI SURVEYORS INC. P.O. BOX 393, LIBBY, MT 59923

Cross Index No. 6-01 T. 31N R. 31W P.M., MT

Adopted July 1, 1981, Montana Board of Professional Engineers & Land Surveyors

Sec. 30



• corner this sheet