

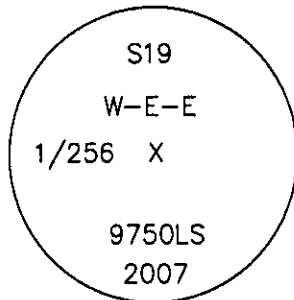
CERTIFIED CORNER RECORDATION

Corner W-E-E 1/256 S19 T. 31 N. R. 31 W. P.M.M. LINCOLN County

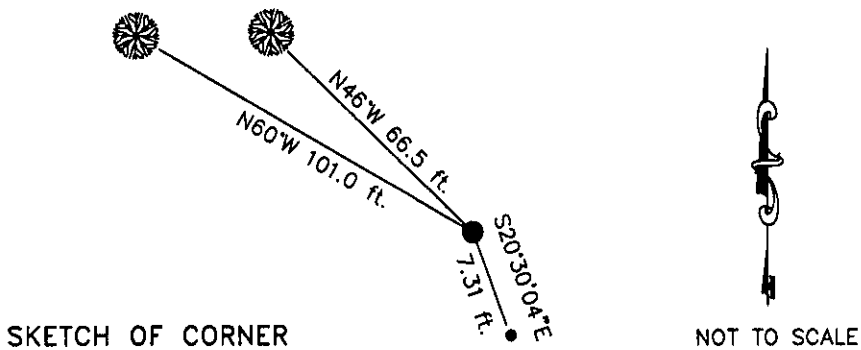
- I. 1979 Certificate of Survey No. 665 by J. H. Ninneman, MT Reg. No. 4661S: Set a 5/8" diam. steel rod with yellow cap stamped J.H.N. 4661S.
- II. Found a 5/8" diam. steel rod bent over at ground level. Origin unknown
- III. At the position determined by survey, set a 5/8" diam. by 24" long rebar, 4" below the surface of River Road, with 3 1/4" diam. aluminum cap marked as shown, from which the new bearing trees:
 - A fir, 22 ins. diam, bears N60°W, 101.0 ft. dist., marked WEE 1/256 S19 BT.
 - A pine, 13 ins. diam, bears N46°W, 66.5 ft. dist., marked WEE 1/256 S19 BT.
 - The found steel rod bears S20°30'40"E, 7.31 ft. dsit.

I did not accept the found steel rod for the true position for the W-E-E 1/256 as it did not fall within positional tolerance.

Painted red the scribed faces and 6 in. bands on the bearing trees. Attached Land Survey Monument and Bearing Tree signs.



Date of Fieldwork: 6/20/2007
 Survey crew: Steve Boyer, Tom Hommel
 Magnetic declination: 20' East assumed
 Equipment used: Hand compass and loggers tape
 U.S. Forest Service, Supervisors Office, 1101 Hwy. 2 West, Libby, MT 59923 (406) 293-6211



SKETCH OF CORNER

CERTIFICATION

I, Thomas M. Hommel 10800LS
 certify the information shown herein is true and correct.

Thomas M. Hommel
 Signature of Party Chief

Steven A. Boyer
 certify that this Corner Record correctly represents work performed by me or under my direction in compliance with the "Corner Recordation Act" (96-223101, et seq., M.C.A.)

Steven A. Boyer
 Signature of Surveyor

Date: 1/9/2008 Reg. No. 9750LS
 Employer: U. S. Forest Service

Office of Clerk and Recorder, County of Lincoln

208581 BOOK: CCR CC&R'S PAGE: 11186 Pages: 1
 STATE OF MONTANA LINCOLN COUNTY
 RECORDED: 01/10/2008 10:22 KOI: CC&R'S
 TAMMY D. LAUER CLERK AND RECORDER
 FEE: \$0.00 BY: *Lise Blomdahl, Deputy*
 TO: FILED

Sec. 19

--	--	--	--	--	--	--	--	--	--

Cross Index No. R-4.25 T. 31N. R. 31W. P.M., MT