

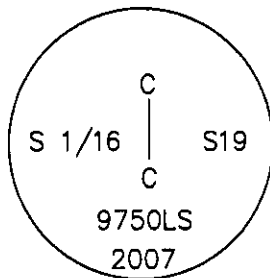
CERTIFIED CORNER RECORDATION

Corner CS 1/16 S19 T. 31 N. R. 31 W. P.M.M. LINCOLN County

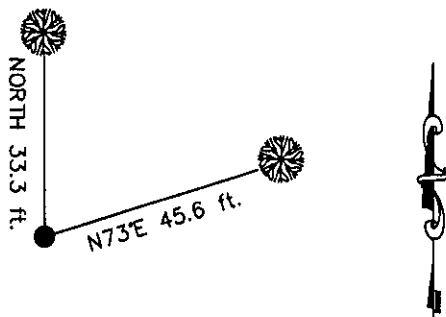
- I. Record: No previous record
- II. No monument found.
- III. At the position for the CS 1/16 as determined by survey, set a 3 1/4" diam. aluminum rock cap in a rock ledge, cemented in place, from which the new bearing trees:

A fir, 11 ins. diam, bears NORTH, 33.3 ft. dist., marked CS 1/16 S19 BT.
 A pine, 22 ins. diam, bears N73°E, 45.6 ft. dist., marked CS 1/16 S19 BT.

Painted red the scribed faces and 6 in. bands on the bearing trees. Attached Land Survey Monument and Bearing Tree signs.



Date of Fieldwork: 7/3/2007
 Survey crew: Steve Boyer, Tom Hommel
 Magnetic declination: 20° East assumed
 Equipment used: Hand compass and loggers tape
 U.S. Forest Service, Supervisors Office, 1101 Hwy. 2 West, Libby, MT 59923 (406) 293-6211



SKETCH OF CORNER

NOT TO SCALE

CERTIFICATION

I, Thomas M. Hommel 10800LS
 certify the information shown herein to be true and correct.

Thomas M. Hommel
 Signature Ground Party Chief

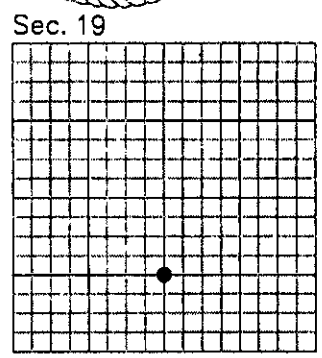
I, Steven A. Boyer
 certify that this Corner Record correctly represents work performed by me or under my direction in compliance with the "Corner Recordation Act" (22-22-101 et seq., M.C.A.)

Steven A. Boyer
 Signature of Surveyor 9750LS

Date: 12/19/2007 Reg. No. 9980LSRD
 Employer: U. S. Forest Service

Office of Clerk and Recorder, County of Lincoln

208448 BOOK: CCR CC&R'S PAGE: 11181 Pages: 1
 STATE OF MONTANA LINCOLN COUNTY
 RECORDED: 01/03/2008 2:08 KOI: CC&R'S
 TAMMY D. LAUER CLERK AND RECORDER
 FEE: \$0.00 BY: *Lee Blomdell, Deputy*
 TO: FILED



Cross Index No. Q-3 T. 31N. R. 31W. P.M., MT