

CERTIFIED CORNER RECORDATION

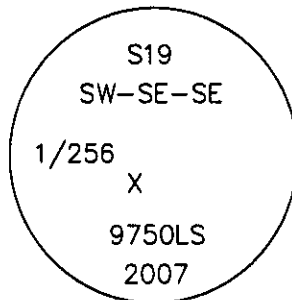
Corner SW-SE-SE 1/256 S19 T. 31 N. R. 31 W. P.M.M. LINCOLN County

- I. 1979 Certificate of Survey No. 665 by J. H. Ninneman, MT Reg. No. 4661S: Set a 5/8" diam. steel rod with yellow cap stamped J.H.N. 4661S.
- II. Found a 5/8" diam. rebar with broken yellow plastic cap marked J.H.N 4661S lying alongside.
- III. At the position determined by survey, set a 5/8" diam. by 24" long rebar, flush with the ground, with 3 1/4" diam. aluminum cap marked as shown, from which the new bearing tree:

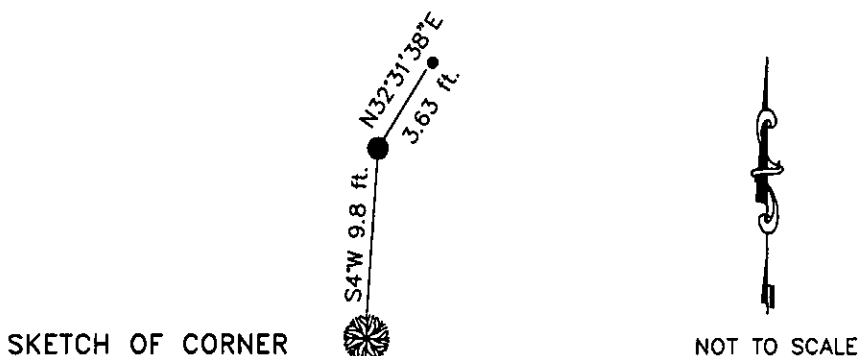
A fir, 10 ins. diam, bears S4°W, 9.8 ft. dist., marked SWSESE 1/256 S19 BT.
The found J.H.N. rebar bears N32°31'38"E, 3.63 ft. dsit.

I did not accept the found J.H.N. rebar as the true position for the SW-SE-SE 1/256 as it did not fall within positional tolerance.

Painted red the scribed faces and 6 in. bands on the bearing trees. Attached Land Survey Monument and Bearing Tree signs. Set a 6 ft. galvanized steel guard post 3 ft. South and East, with Land Survey Monument and Property Boundary decals attached.



Date of Fieldwork: 6/20/2007
Survey crew: Steve Boyer, Tom Hommel
Magnetic declination: 20° East assumed
Equipment used: Hand compass and loggers tape
U.S. Forest Service, Supervisors Office, 1101 Hwy. 2 West, Libby, MT 59923 (406) 293-6211



SKETCH OF CORNER

NOT TO SCALE

CERTIFICATION

I, Thomas M. Hommel 10800LS
certify the information shown herein is true and correct.

Steven A. Boyer
Signature of Surveyor & Seal

I, Steven A. Boyer
certify that this Corner Record correctly represents work performed by me or under my direction in compliance with the "Corner Recordation Act" (70-22-101, et seq., M.C.A.)

Date: 12/19/2007 Reg. No. 9750LS

Employer: U. S. Forest Service

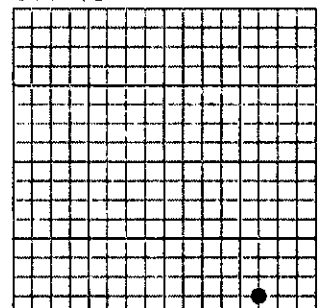
Office of Clerk and Recorder, County of Lincoln

208446 BOOK: CCR CC&R'S PAGE: 11179 Pages: 1
STATE OF MONTANA LINCOLN COUNTY
RECORDED: 01/03/2008 2:06 KOI: CC&R'S
TAMMY D. LAUER CLERK AND RECORDER
FEE: \$0.00 BY: Bill Blomdahl, Deputy
TO: FILED

Cross Index No. Q.75-4.25 T. 31N. R. 31W. P.M., MT

Adopted July 1, 1981, Montana Board of Professional Engineers & Land Surveyors

Sec. 19



● corner this sheet