

# CERTIFIED CORNER RECORDATION

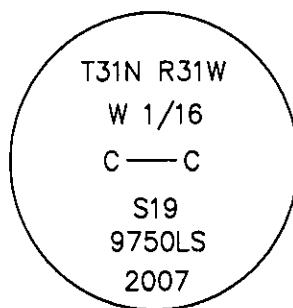
Corner CW 1/16 S19 T 31 N. R. 31 W. P.M.M. LINCOLN County

- I. No previous record.
- II. No monument found.
- III. At the position determined by survey, set a 5/8" diam. by 24" long rebar, 23" in the ground, with 3 1/4" diam. aluminum cap marked as shown, from which the new bearing trees:

A fir, 5 ins. diam, bears N12°E, 12.6 ft. dist., marked "X" BT.

A fir, 7 ins. diam, bears N76°E, 16.3 ft. dist., marked CW 1/16 S19 BT.

Painted red the scribed faces and 6 in. bands on the bearing trees. Attached Land Survey Monument and Bearing Tree signs. Set a 6 ft. galvanized steel guard post 3 ft. South and West, with Land Survey Monument and Property Boundary decals attached.



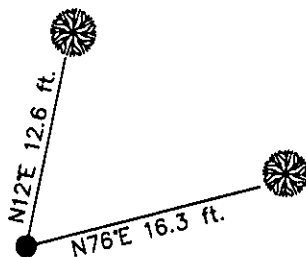
Date of Fieldwork: 6/26/2007

Survey crew: Steve Boyer, Tom Hommel

Magnetic declination: 20° East assumed

Equipment used: Hand compass and loggers tape

U.S. Forest Service, Supervisors Office, 1101 Hwy. 2 West, Libby, MT 59923 (406) 293-6211



SKETCH OF CORNER

NOT TO SCALE

## CERTIFICATION

I, Thomas M. Hommel 10800LS  
certify the information shown herein is true and correct.

Thomas M. Hommel  
Signature Ground Party Chief

I, Steven A. Boyer  
certify that this Corner Record correctly represents work performed by me or under my direction in compliance with the "Corner Recordation Act" (70-22-101, et seq., M.C.A.)

Steven A. Boyer  
Signature of Surveyor & Registered

Date: 12/19/2007 Reg. No. 9750LS

Employer: U. S. Forest Service

Office of Clerk and Recorder, County of Lincoln

208445 BOOK: CCR CC&R'S PAGE: 11178 Pages: 1

STATE OF MONTANA LINCOLN COUNTY

RECORDED: 01/03/2008 2:05 KOI: CC&R'S

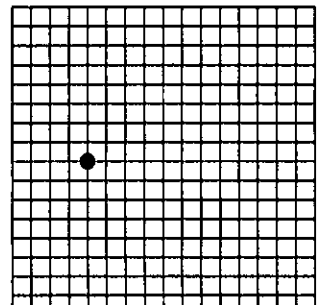
TAMMY D. LAUER CLERK AND RECORDER

FEE: \$0.00

BY: Lee Clomdale, Deputy

TO: FILED

Sec. 19



Cross Index No. P-2 T. 31N. R. 31W. P.M., MT

Adopted July 1, 1981, Montana Board of Professional Engineers & Land Surveyors

● corner this sheet