

# CERTIFIED CORNER RECORDATION

Corner NORTH MEANDER COR S24|S19 T. 31 N. R. 31,32 W. P.M.M. LINCOLN County

I. 1893 Original Survey of the Fractional West Boundary of T. 31 N., R. 31 W. by Daniel P. Mumbrue: Right bank of the Kootenai river. Set a post 4 ft. long, 4 ins. square, 24 ins. in the ground for Meander Cor. to fractional Secs. 19 & 24, marked MC on S. face with T31N on N., R31W S19 on E. and R32W S24 on W. faces, from which:

- A fir, 24 ins. diam, bears N65 1/2°E, 80 lks. dist., marked T31N R31W S19 MC BT.
- A tamarack, 18 ins. diam, bears N36 1/2°W, 97 lks. dist., marked T31N R32W S24 MC BT.

1893 Original Survey of the Subdivision and Meanders of Fractional T. 31 N., R. 31 W. by Daniel P. Mumbrue: Post firmly set and properly marked and witnessed as heretofore described.

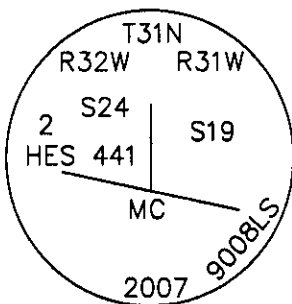
1915 Original Forest Service Survey of H.E.S. No. 441 by Elmer R. Johnson: Cor. No. 2 identical to the meander corner on the north bank of the Kootenai River, heretofore described, set a quartzite stone alongside, marked 2 HES 441 on NW face, and a nail in top of the meander corner for the exact corner point. No bearings available and pits impractical, therefore raise a mound of stone 4 ft. base, 2 ft. high, NW of corner.

II. Found: Stone 10"x8"x14", buried 6" below the surface, marked 2 HES 441 on NW face.

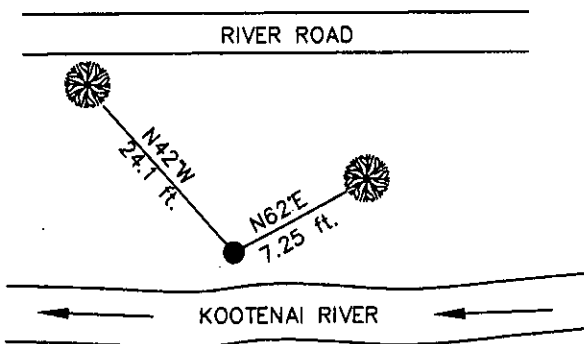
III. Set a 2 1/2" diam., 30" long aluminum pipe, 24" in the ground with a 3 1/4" diam. aluminum cap marked as shown, on the East side of the found HES stone from which the new bearing trees:

- A cedar, 5 ins. diam, bears N62°E, 7.25 ft. dist., marked "X" BT.
- A pine, 32 ins. diam, bears N42°W, 24.1 ft. dist., marked 2 HES 441 MC S24 BT.

Painted red the scribed faces and 6 in. bands on the bearing trees. Attached Land Survey Monument and Bearing Tree signs. Set a 6 ft. galvanized steel guard post 3 ft. North, with Land Survey Monument decal attached.



Date of Fieldwork: 6/19/2007  
 Survey crew: Steve Boyer, Tom Hommel  
 Magnetic declination: 20° East assumed  
 Equipment used: Hand compass and loggers tape  
 U.S. Forest Service, Supervisors Office, 1101 Hwy. 2 West, Libby, MT 59923 (406) 293-6211



SKETCH OF CORNER

NOT TO SCALE

**CERTIFICATION**

I, Thomas M. Hommel 10800LS  
 certify the information shown herein is true and correct.

*[Signature]*  
 Signature Ground Party Chief

I, Steven A. Boyer  
 certify that this Corner Record correctly represents work performed by me or under my direction in compliance with the "Corner Recordation Act" (70-22-101, et seq., M.C.A.)

*[Signature]*  
 Signature of Surveyor & Seal REGISTERED SURVEYOR

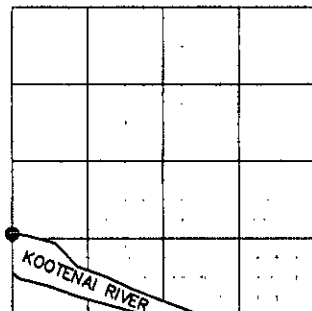
Date: 12/18/2007 Reg. No. 19750LS

Employer: U. S. Forest Service

Office of Clerk and Recorder, County of Lincoln

208444 BOOK: CCR CC&R'S PAGE: 11177 Pages: 1  
 STATE OF MONTANA LINCOLN COUNTY  
 RECORDED: 01/03/2008 2:04 KOI: CC&R'S  
 TAMMY D. LAUER CLERK AND RECORDER  
 FEE: \$0.00 BY File Blondell, Deputy  
 TO: FILED

Sec. 19



Cross Index No. NORTH MC S24|S19 T. 31N. R. 31,32W. P.M., MT

Adopted July 1, 1981, Montana Board of Professional Engineers & Land Surveyors

● corner this sheet