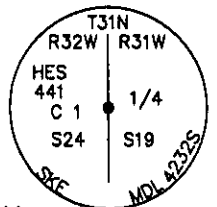
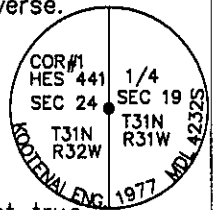


# CERTIFIED CORNER RECORDATION

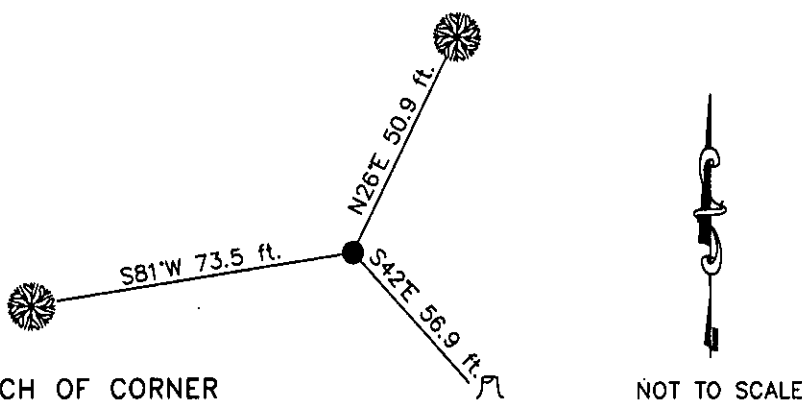
W 1/4 S19

Corner COR. 1 H.E.S. 441 T. 31 N. R. 31 W. P.M.M. LINCOLN County

- I. 1893 Original Survey of the Fractional West Boundary of T. 31 N., R. 31 W. by Daniel P. Mumbrue:  
Set a post 3 ft. long, 3 ins. square, 24 ins. in the ground for 1/4 sec. cor., marked 1/4 S on W. face, from which:  
A fir, 8 ins. diam, bears N79°E, 9 lks. dist., marked. 1/4 S BT.  
A fir, 20 ins. diam, bears S13 1/4°W, 27 lks. dist., mkd. 1/4 S BT.
- 1915 Forest Service Survey of H.E.S. 441 by Elmer R. Johnson: Beginning at Cor. No. 1, identical with point for Cor. No. 1 of the listing survey, and identical with the 1/4 Cor. of Secs. 19 and 24, heretofore described. Set a stake alongside, marked 1 H.E.S. 441 on W. face, and a nail in top of the 1/4 Cor. for the exact corner point, from which  
A cross (X) on a fir, 14 ins. diam, bears S73° 2'E, 37 lks. dist.  
A cross (X) on a red fir 18 ins. diam, bears N2°26'W, 56 lks. dist., each blazed and scribed 1 HES 441 BT.
- Raise a mound of earth, 4 ft. base, 2 ft. high, W. of corner.
- 1916 GLO Retracement of the East Boundary of T. 31 N., R. 32 W. by R. Fitzhugh Maclean: Intersect the 1/4 sec. cor. for secs. 19 and 24, which is a post, marked and witnessed as described by the Surveyor General. This cor. is also cor. No. 1, H.E.S. No. 441. This cor. will hereafter refer to sec. 19, T. 31 N., R. 31 W. only.
- 1977 Certified Corner Recordation by Melvin D. Lauteren, MT Reg. No. 4232S: No evidence remaining. Original record calls for -14" dia. Fir, S73°24'E, 37 lks.; 18" dia. Red Fir, N02°26'E, 56 lks. At the East 1/4 Corner of Section 24, T31N, R32W, P.M.M., also being H.E.S. 441, Corner No. 1, I set a 2" pipe w/Brass Cap scribed as shown on reverse; I make 2 B.T.'s as shown in sketch on reverse. (New BT's) A white fir, 3.3 circ., bears S47°22'53"E, 48.07'.  
A white fir, 4.2 circ., bears S88°37'40"W, 75.69'
- 1981 Certified Corner Recordation by Melvin D. Lauteren, MT Reg. No. 4232S:  
Recites the same record as the 1977 Certified Corner Recordation and adds the following. I found the Brass Cap and BTS as reported in Corner Record Book 1, Page 517, but found distance to be 385.77' from H.E.S. No. 441, Corner No. 5. I checked our notes and found erroneous tie used in 1977 survey. I moved the pipe and set true position. (New bearings and distances from previous established BT's) S42°15'25"E, 56.95'. S81°09'25"W, 73.52'
- II. Found a 2 in. diam. iron pipe, 12 ins. above the ground, firmly set with a 2 1/2 in. diam. brass cap marked as shown below, from which:  
A fir stump, 16 ins. diam, bears S42°E, 56.9 ft. dist., no visible marks.  
A fir, 22 ins. diam, bears S81°W, 73.5 ft. dist., mkd. with a healed face.
- III. Established 1 new bearing tree  
A fir, 12 ins. diam, bears N26°E, 50.9. ft. dist., marked 1/4 S19 BT.  
Painted red the scribed faces and 6 in. bands on the bearing trees. Attached Land Survey Monument and Bearing Tree signs. Set a 6 ft. galvanized steel guard post 3 ft. North and East, with Land Survey Monument and Property Boundary decals attached.



Date of Fieldwork: 8/30/2007  
Survey crew: Steve Boyer, Tom Hommel  
Magnetic declination: 20° East assumed  
Equipment used: Hand compass and loggers tape  
U.S. Forest Service, Supervisors Office, 1101 Hwy. 2 West, Libby, MT 59923 (406) 293-6211



CERTIFICATION

I, Thomas M. Hommel 10800LS  
certify the information shown herein is true and correct.

Steven A. Boyer  
Signature Ground Party Chief

I, Steven A. Boyer  
certify that this Corner Record correctly represents work performed by me or under my direction in compliance with the "Corner Recordation Act" (70-22-101, et seq., M.C.A.)

STEVEN A. BOYER  
Signature of Surveyor & Seal

Date: 12/18/2007 Reg. No. 9750LS  
Employer: U. S. Forest Service

Office of Clerk and Recorder, County of Lincoln

208443 BOOK: CCR CC&R'S PAGE: 11176 Pages: 1

STATE OF MONTANA LINCOLN COUNTY

RECORDED: 01/03/2008 2:04 KOI: CC&R'S

TAMMY D. LAUER CLERK AND RECORDER

FEE: \$0.00 BY: Jane Blomdall, Deputy

TO: FILED

