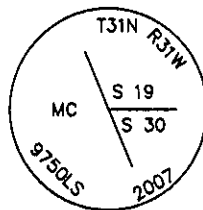


CERTIFIED CORNER RECORDATION

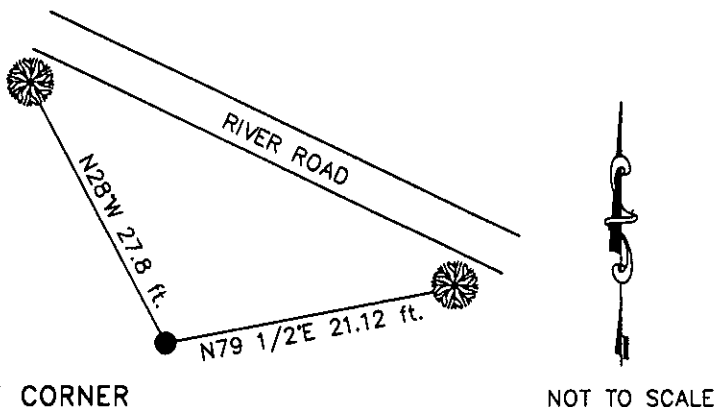
Corner EAST MEANDER COR S19 S30 T. 31 N. R. 31 W. P.M.M. LINCOLN County

- I. 1893 Original Survey of the Subdivision and Meanders of Fractional T. 31 N., R. 31 W. by Daniel P. Mumbrue: Right bank of the Kootenai River. Set a post 4 ft. long, 4 ins. square, 24 ins. in the ground for meander Cor. to fractional Secs. 19 & 30, marked MC on W. face with T31N S19 on N., R31W on E. and S30 on S. faces, from which:
- A pine, 12 ins. diam, bears N79 1/2°E, 32 lks. dist., marked T31N R31W S19 MC BT.
 - A cottonwood, 12 ins. diam, bears N75°E, 47 lks. dist., marked T31N R31W S30 MC BT.
- II. Found: An original bearing tree determined from the calculated position for the Meander Corner by survey:
- A pine, 40 ins. diam, bears N79 1/2°E, 21.12 ft. dist., no face visible due to large fill slope.
- III. Set from the found original bearing tree using record bearing and distance, a 2 1/2" diam., 30" long aluminum pipe, 24" in the ground with a 3 1/4" diam. aluminum cap marked as shown, from which the new bearing tree
- A cottonwood, 7 ins. diam, bears N28°W, 27.8. ft. dist., marked T31N R31W MC S19 BT.



Painted red the scribed faces and 6 in. bands on the bearing trees. Attached Land Survey Monument and Bearing Tree signs. Set a 6 ft. galvanized steel guard post 3 ft. North, with Land Survey Monument decal attached.

Date of Fieldwork: 6/13/2007
 Survey crew: Steve Boyer, Tom Hommel
 Magnetic declination: 20° East assumed
 Equipment used: Hand compass and loggers tape
 U.S. Forest Service, Supervisors Office, 1101 Hwy. 2 West, Libby, MT 59923 (406) 293-6211



SKETCH OF CORNER

NOT TO SCALE

CERTIFICATION

I, Thomas M. Hommel 10800LS
 certify the information shown herein is true and correct.

Thomas M. Hommel
 Signature Ground Party Chief

I, Steven A. Boyer
 certify that this Corner Record correctly represents work performed by me or under my direction in compliance with the "Corner Recordation Act" (70-42-101 et seq., M.C.A.)

Steven A. Boyer
 Signature of Surveyor & Seal

Date: 12/18/2007 Reg. No. 10750LS

Employer: U. S. Forest Service

Office of Clerk and Recorder, County of Lincoln

208442 BOOK: CCR CC&R'S PAGE: 11175 Pages: 1

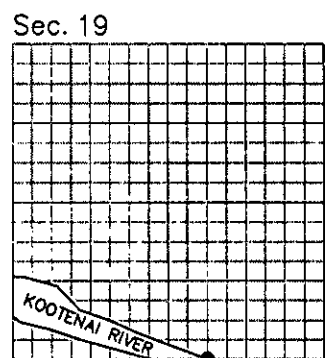
STATE OF MONTANA LINCOLN COUNTY

RECORDED: 01/03/2008 2:03 KOI: CC&R'S

TAMMY D. LAUER CLERK AND RECORDER

FEE: \$0.00 BY Lee Blomdahl, Deputy

TO: FILED



• corner this sheet

Cross Index No. S19 MC S30 T. 31N. R. 31W. P.M., MT

Adopted July 1, 1981, Montana Board of Professional Engineers & Land Surveyors