

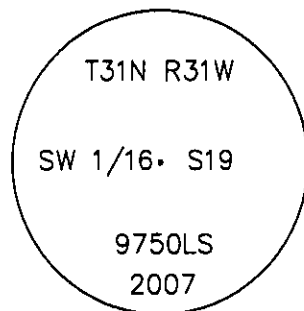
CERTIFIED CORNER RECORDATION

Corner SW 1/16 S19 T. 31 N. R. 31 W. P.M.M. LINCOLN County

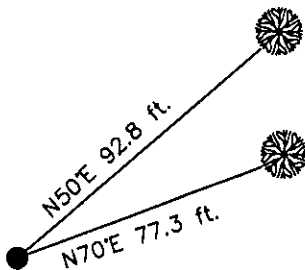
- I. No previous record.
- II. No monument found.
- III. At the position determined by survey, set a 5/8" diam. by 24" long rebar, 21" in the ground, with 3 1/4" diam. aluminum cap marked as shown, from which the new bearing trees:

A fir, 12 ins. diam, bears N50°E, 92.8 ft. dist., marked SW 1/16 S19 BT.
A fir, 9 ins. diam, bears N70°E, 77.3 ft. dist., marked SW 1/16 S19 BT.

Painted red the scribed faces and 6 in. bands on the bearing trees. Attached Land Survey Monument and Bearing Tree signs. Set a 6 ft. galvanized steel guard post 3 ft. North and East, with Land Survey Monument and Property Boundary decals attached.



Date of Fieldwork: 6/26/2007
Survey crew: Steve Boyer, Tom Hommel
Magnetic declination: 20' East assumed
Equipment used: Hand compass and loggers tape
U.S. Forest Service, Supervisors Office, 1101 Hwy. 2 West, Libby, MT 59923 (406) 293-6211



SKETCH OF CORNER

NOT TO SCALE

CERTIFICATION

I, Thomas M. Hommel 10800LS
certify the information shown herein is true and correct.

Signature Ground Party Chief

I, Steven A. Boyer
certify that this Corner Record correctly represents work performed by me or under my direction in compliance with the "Corner Recordation Act" (70-22-101, et seq., M.C.A.)

Signature of Surveyor & Seal

Date: 12/19/2007 Reg. No. 9750LS

Employer: U. S. Forest Service

Sec. 19

Office of Clerk and Recorder, County of Lincoln

208441 BOOK: CCR CC&R'S PAGE: 11174 Pages: 1

STATE OF MONTANA LINCOLN COUNTY

RECORDED: 01/03/2008 2:02 KOI: CC&R'S

TAMMY D. LAUER CLERK AND RECORDER

FEE: \$0.00

BY: Lee Blomdale Deputy

TO: FILED

Cross Index No. Q-2 T. 31N. R. 31W. P.M., MT

Adopted July 1, 1981, Montana Board of Professional Engineers & Land Surveyors

● corner this sheet