

CERTIFIED CORNER RECORDATION

Corner C-S-S-N 1/256 Sec.34 T. 31 N. R. 31 W. P.M.M. LINCOLN County

- I. Record: 2000 Certificate of Survey No. 2937 by Davis Surveying.
2000 Certified Corner Recordation page 10452:

Set a $\frac{5}{8}$ inch by 24 inch rebar with a $3\frac{1}{4}$ inch aluminum cap 23 inches in the ground from which:

A $9\frac{1}{2}$ inch DBH Ponderosa pine bears N.14°E. 26.70 ft. dist. scribed C-S-S-N 1/256 S34 BT.

A 15 inch DBH Ponderosa pine bears N.66°E. 53.20 ft. dist. scribed c-S-S-N 1/256 S34 BT.

II. Found:

A Ponderosa pine, 9 ins. diam., bears N.14°E., 26.70 ft. dist., mkd. C-S-S-N 1/256 S34 BT.

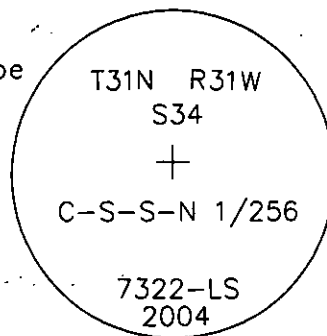
A Ponderosa pine, 15 ins. diam., bears N.66°E., 53.20 ft dist., mkd. C-S-S-N 1/256 S34 BT.

- III. Perpetuation: At a point determined from record bearing tree distances, set a $\frac{5}{8}$ in. diam. steel rebar 24 ins. long 22 ins. in the ground with a $3\frac{1}{4}$ in. diam. Alum. cap mkd. as show below.

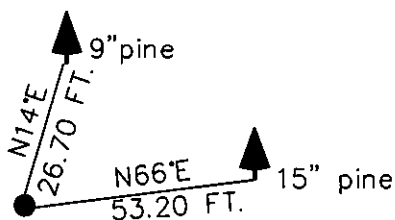
Painted faces and 6 in. wide red bands to all bearing trees and attached Land Survey Monument and Bearing Tree signs where needed.

Magnetic declination: 20° East assumed

Equipment used: Hand compass and loggers tape



Kootenai Surveyors Inc., 314 California Av., Libby, MT. 59923 (406) 293-4354



SKETCH OF CORNER

CERTIFICATION
I, Kenneth Kern
certify the information shown herein is true and correct.
Kenneth Kern
Signature Ground Party Chief

I, Alvah F. Hughes
certify that this Corner Record correctly represents work performed by me or under my direction in compliance with the "Corner Recordation Act" (70-22-101, et seq., M.C.A.)
Alvah F. Hughes
Signature of Surveyor & Seal

Date: 04/26/2004 Reg. No. 7322-LS 73.2LS

Employer: Kootenai Surveyors, Inc.

Office of Clerk and Recorder, County of Lincoln This "corner

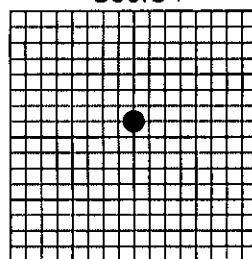
record" was filed for record c-

was noted on the cross-index book No. _____

190124 BOOK: CCR CC&R'S PAGE: 10906 Pages: 1
STATE OF MONTANA LINCOLN COUNTY
RECORDED: 12/06/2005 9:30 KOI: CC&R'S
CORAL M. CUMMINGS CLERK AND RECORDER
FEE: \$0.00 BY: Jeanie Degen
TO: AL HUGHES-SURVEYOR P.O. BOX 393, LIBBY MT 59923

Cross Index No. _____ T. 31N. R. 31W. P.M., MT

Adopted July 1, 1981, Montana Board of Professional Engineers & Land Surveyors



• corner this sheet