

CERTIFIED CORNER RECORDATION

Corner C-S-S-N 1/256 T. 31 N., R. 31 W., P.M.M. Lincoln County

Sec. 34

Record :

Found Evidence :

Perpetuation :

Set a 5/8 inch by 24 inch rebar with a 3 1/4 inch aluminum cap stamped: (See diagram below) 23 inches in the ground from which:

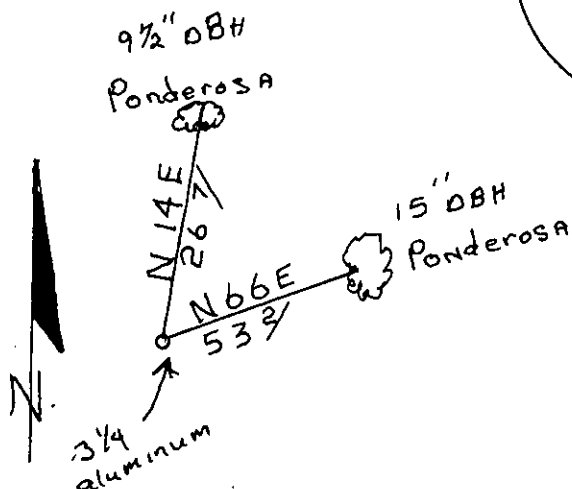
A 9 1/2 inch DBH Ponderosa pine bears N 14° E 26.7 ft. dist. scribed C-S-S-N 1/256 S 34 BT.

From which:

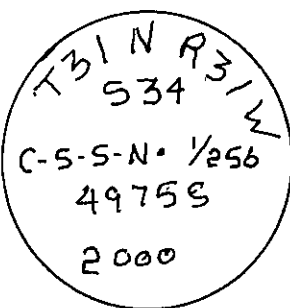
A 15 inch DBH Ponderosa pine bears N 66° E 53.2 ft. dist. scribed C-S-S-N 1/256 S 34 BT.

Attached warning and bearing tree signs and painted 6 inch wide red bands around both trees.

DECLINATION: 18° E



3 1/4
aluminum



C-S-S-N 1/256 S 34 BT

C-S-S-N 1/256 S 34 BT

CERTIFICATION

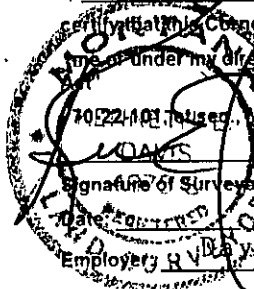
I, George Clark

certify the information shown herein is true and correct

Signature of Ground Party Chief

Kenneth E. Davis

I, George Clark certify that this Corner Record correctly represents work performed by me or under my direction in compliance with the "Corner Recordation



Signature of Surveyor & Seal

Date: 10/22/00 Reg. No. 4975 S

Employer: RVDavis Surveying, Inc.

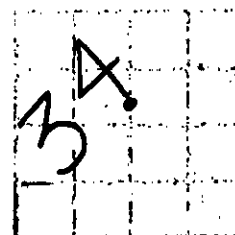
Sketch of Corner

Section

Office of Clerk and Recorder, County of Lincoln

This "corner record" was filed for record on Sept 22, 2000 was noted on the cross-index plat and is assigned page No. 10452

in book No. Coral M. Cunningham By DEB
County Official



Sec. 34

Cross Index No. C-S-S-N 1/256 T 31 N., R. 31 W., PMM

• THIS CORNER